

# 2020 Halfmann - Beckton *Profit Through Experience Sale*

Wednesday, October 7, 2020 • 1 pm  
at the ranch in Miles, TX

140 Age-Advantage Red Angus Bulls  
180 Bred Commercial Red Angus Females



**1 Beckton  
Red Angus**  
Foundation Herd of the Red Angus Breed

**HALFMANN**  
RED ANGUS

*Raised with Tradition • Bred for Profit • Developed to Last*



# Welcome to the Halfmann-Beckton Red Angus Sale!

Dear Friends,

Please join us on Wednesday, October 7th at the Halfmann ranch near Miles, Texas for the 2020 edition of our “Profit Through Experience Sale”. The Halfmann and Beckton Red Angus programs have over 130 years combined experience in supplying genetics to the beef industry. Our respective longevity is largely due to our shared focus on producing Red Angus seedstock that combine the necessary traits to sustain rancher profitability.

There's no silver bullet for cow/calf profitability, but rather the accumulation of successful observations across the entire enterprise. These successes are measured in more live calves, higher pregnancy rates, cows staying productive in the herd for more calf crops - and ultimately weaning more total pounds per acre. Throughout this 2020 sale catalog, you'll find Red Angus bulls that balance calving ease, pay-weight, reproductive traits, lower cow feed inputs, and calf value traits, and those Age-Advantaged bulls are mature, masculine, athletic and ready to service lots of females in large country.

Superior Livestock Auction data compiled by Kansas State University (KSU) between 2010 and 2018 shows that Red Angus sired heifers have outsold Black Angus sired heifers by \$7/cwt. 2020 has seen the dominance of the Red Angus female, and Red Angus sired heifers remain the replacement of choice among commercial beef operations. The calf market has been exceptionally resilient this summer and once again we're seeing Red Angus sired heifer calves often outselling their steer mates.

In addition to 140 Age Advantage bulls, Beckton and Halfmann Red Angus have come together to offer 180 head of commercial Red Angus females, which will sell from their respective ranch. These females result from the same sire lines that produced our 2020 bull offering, so they are loaded with genetics for easy calving, easy keeping, fertility, longevity, and low maintenance costs.

As you study the catalog if you have any questions, or need someone to assist you in bull selection, please feel free to give either of our operations a call. We look forward to seeing you on October 7th!

## Halfmann Red Angus & Beckton Red Angus



CHAD, GLEN & CODY HALFMANN



TRISH & CAM FORBES





Cam Forbes Office: 307-674-6095  
Evenings: 307-674-8162

37 Beckton Drive Sheridan, WY 82801  
becktonwyo@gmail.com  
BecktonRedAngus.com



Office 325.468.2390

Glen 325.895.0544 • Cody 325.245.8928 • Chad 325.374.6116  
2501 CR 357 Miles, TX 76861  
info@halfmannredangus.com  
HalfmannRedAngus.com

## Auctioneer

Roger Jacobs Billings, MT  
Cell: 406-698-7686

## Livestock Representatives

Barrett Simon - Red Angus Association  
Commercial Marketing Specialist  
Cell: 316-452-1792

Phil Stoll - Weekly Livestock Reporter  
Cell: 817-366-7332

Scott Farmer - Special Assignment  
Cell: 817-597-1731

Justin Stelzer - Special Assignment  
Cell: 817-992-7059

## Sale Location - Halfmann Ranch

From San Angelo, Texas, head east on US 67 to Miles, proceed through Miles for 2.4 miles. Left onto County Road 357 to ranch.  
From Ballinger, Texas, head west on US 67 to Rowena, proceed through Rowena for approximately 6 miles. Turn right onto county road 357 to ranch. Geographical location: 31.610411,-100.144257.

## Airline Info

San Angelo Airport Regional Airport  
American Airlines flies into San Angelo, Texas (30 miles from Halfmann Ranch).

Midland International Airport  
Continental and Southwest Airlines fly into Midland, Texas (125 miles from Halfmann Ranch).

## Hotel Accommodations

Courtyard by Marriott, San Angelo  
2572 Southwest Blvd - 325-703-6400

Holiday Inn Express, San Angelo  
4613 W Houston Harte Expressway - 325-223-2200

Comfort Suites, San Angelo  
4450 W Houston Harte Expressway - 325-944-8600

Candlewood Suites, San Angelo  
4587 W Houston Harte Expressway - 325-947-9400

Executive Inn, Ballinger  
1005 Hutchins Ave - 325-365-5717

## Online Supplemental Information:

Color photos, supplement information, videos and catalog available on our website: [HalfmannRedAngus.com](http://HalfmannRedAngus.com)

## Cattle Viewing

Videos are available online at [www.HalfmannRedAngus.com](http://www.HalfmannRedAngus.com). All bulls and Halfmann's commercial heifers will be on display at 12 noon the day prior to the sale at Halfmann Ranch Headquarters, Miles, Texas. The Beckton commercial females will be available for viewing and delivered from their ranch in Sheridan, Wyoming.

- Bulls will be delivered free of charge to **central points** for the first 400 miles from Miles, TX. All miles beyond 400 will be at cost.
- Registered females will be delivered at cost.
- Buyers whose bull and registered female purchases total \$18,000 or greater will receive free delivery in the continental US.
- Buyers who haul their own animals on sale day can deduct \$100 per bull from their purchases.
- Halfmann commercial females sell FOB according to their lot description. Beckton will pay the first 400 miles freight from Sheridan, WY for Beckton commercial females.

We will deliver cattle 1 to 3 weeks after the sale, although we will try to accommodate you if you need your bulls right away. We will make every effort to deliver your purchases to a central point as close as possible to your ranch.

All deliveries are at buyer's risk. We recommend insuring your purchases.

## Insurance

Insurance will be available to purchase on sale day at checkout

## Feeding

Please arrange to pick up or receive your purchases. Halfmann Ranch will begin shipping on the Monday following the sale. We will hold cattle if needed for 10 days following the sale. Afterwards, purchased cattle will be assessed for feed at \$5/head/day.

## Absentee Bids

If you are unable to attend the sale, we can help you select the bulls or females to fit your needs. We guarantee Sight Unseen Purchase Satisfaction. Contact us or one of the livestock representatives before the sale. Your bid will be handled confidentially.

## Herd Health

We have a comprehensive herd-wide health program which includes vaccinations for 7-Way, IBR, BVD, PI3, BRSV, Lepto, and ivermectin. The heifers are also vaccinated for bangs and vibrio. All Halfmann animals have been tested negative for BVD PI. All the bulls will have a general health and fertility examination by sale day. Breeding information will be available on sale day. Interstate health papers will be furnished for each animal in accordance with Federal Regulations.

**International Buyers:** it will be the responsibility of the buyer to cover the costs of any testing required for export outside of the United States.

## Sale Day Lunch

A barbecue lunch will be served on sale day starting at 11 am. The lunch will be sponsored by **Gorman Milling Company/Red Chain Feeds**.

## Auction Format:

Selling in catalog order by recorded video. May bid in person at Halfmann Ranch in Miles, TX, by phone with a livestock representative, or through Superior Productions (see next page for phone and computer instructions).



# Table of Contents

<b>3</b>	<b>INFORMATION</b>	<b>40</b>	<b>COMMERCIAL FEMALES</b>
<b>4</b>	<b>ABSENTEE BIDDING</b>	<b>42</b>	<b>REFERENCE SIRES</b>
<b>7</b>	<b>BULLS</b>	<b>43</b>	<b>TERMS &amp; CONDITIONS</b>
<b>21</b>	<b>RANCHER'S GUIDE TO EPDS</b>		

## *Viewing*

All bulls are at Halfmann Ranch, Miles, TX  
Halfmann females are in Miles, TX  
Beckton females are in Sheridan, WY



## How To Participate As An Absentee Buyer

We have made preparations to bid and buy livestock through Superior Productions' "Call or Click-To-Bid" service for those unable to attend in person on sale day. **Please note that all of the lots in the sale will also be available for viewing online prior to sale day at [superiorlivestock.com](http://superiorlivestock.com).**

## Here's How It Works

### Turn in Bids Over the Phone

This is our traditional method of buying livestock and is the suggested process for anyone who does not have consistent, high-speed internet. To get started simply go online to [superiorlivestock.com](http://superiorlivestock.com) and click on the tab titled "Register for a Buyer Number". Select the registration form for Superior Productions and print the registration form. Fill it out and fax it in to Superior Productions at 817-378-3380 with a signature on it, or scan and email the form to [info@superiorauction.com](mailto:info@superiorauction.com). You can also mail it in to the address provided on the form. Upon receipt of this information Superior will call you with a buyer's number and the bid line phone number that you will use on sale day to place bids over the phone.

### Click-To-Bid

This is Superior's online bidding program for cattle buying. **Please note that high-speed internet is required – this is not for dial-up or satellite internet.** Registration is free, but you must become a member of [superiorclicktobid.com](http://superiorclicktobid.com) to sign up. Becoming a member is easy – just go to the homepage of [superiorclicktobid.com](http://superiorclicktobid.com) and follow the outlined steps to get started. Input your information and select a username and password. You will receive an e-mail confirming you are a member. From that point forward you just have to sign in and select the sale you would like to register for and once approved by the ranch you will receive an email confirming which sale you are now registered for.

### Viewing the Auction

There are 2 places to view the sale broadcast live on the internet: [www.superiorlivestock.com](http://www.superiorlivestock.com) or [www.superiorclicktobid.com](http://www.superiorclicktobid.com). Just go to the home page of either website and select the auction. If you just want to watch the auction on your computer, smartphone, or tablet, go to [www.superiorlivestock.com](http://www.superiorlivestock.com). If you want to bid over the computer, you must go to [www.superiorclicktobid.com](http://www.superiorclicktobid.com). Remember, you can call in to bid on the internet, but you must be a member of [www.superiorclicktobid.com](http://www.superiorclicktobid.com) to "click-to-bid". Your computer must have Flash Media Player installed for this website to view the auction. If you have any questions, please call the Superior Productions office at 800-431-4452.

**If you plan to bid by phone through Superior Livestock or 'Click-to-Bid', you must register at [www.superiorlivestock.com](http://www.superiorlivestock.com) prior to bidding.**



# MEET OUR TEAM



GLEN & DIANE HALFMANN



CODY, LAURA, EMILY, WILLIAM  
& MATTHEW HALFMANN



CHAD & MORGAN HALFMANN



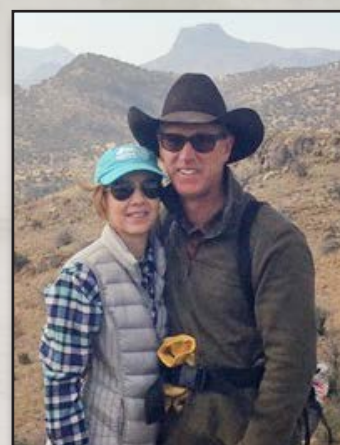
CHANO HERNANDEZ



ALFONSO CARLOS



BELLA,  
HERD MANAGER



DIANE & DR. CHRIS  
WOMACK, DVM



JONNA & KIRK  
BOATRIGHT, CLERKING  
& LOAD OUT



DOUG TAYLOR,  
LOADOUT



ROGER JACOBS,  
AUCTIONEER



# RED CHAIN FEEDS

# THE BRAND TO TRUST.



Since 1969, Gorman Milling Company has proudly supplied Texas cattle raisers with quality mixed feeds, pellets, cubes, and commodities under the Red Chain Feeds brand name. Whether you own a couple of cows or a couple thousand, we remain dedicated to providing you with the products and expertise needed to help your operation flourish.

**REDCHAINFEEDS.COM**

**GORMAN MILLING COMPANY, INC**  
Gorman, Texas | (800) 588-2252

## Sale Catalog Data:

**RAAA Category & % Red Angus**  
**Red Angus Assoc Registration #**

**HerdBuilder Index & Percentile Rank**  
 Profitability derived per cow exposed when bulls are mated to heifers and mature cows, replacements are retained and all progeny are fed and sold on a value based grid.

**Calving Ease, Weight, & Repro Traits EPDs & percentile ranks (lower row)**  
 CED = Calving Ease Direct  
 BW = Birth Weight  
 WW = Weaning Weight  
 ADG = Average Daily Gain  
 YW = Yearling Weight  
 MLK = Milk  
 ME = Maintenance Energy Requirement  
 HPG = Heifer Pregnancy Rate  
 CEM = Calving Ease Maternal  
 STY = Stayability

**Actual Birth Weight**  
**Scrotal Circumference**  
**Relative Frame Size**  
 L = Large  
 M = Med  
 S = Small

**GridMaster Index & Percentile Rank**  
 Profitability derived per cow exposed when bulls are mated to mature cows, no replacements are retained and all progeny are fed and sold on a value based grid.

**Carcass EPDs & Percentile Rank**  
 MARB = USDA Marbling Score  
 REA = Ribeye Area (in<sup>2</sup>)

**dam's age & weight**  
 actual age & weight taken of the dam of that animal at weaning

**dam's MPPA**  
 most probable producing ability

**Individual Data**

act. BW	73
SC	40
Frame	M

**1** **Bull Name**  
 02-21-2019 | GKH : G564 | 1A (100%) | #3522544  
 BROWN SYNERGY X7838 BECKTON NEBULA P707  
 C-BAR & BROWN ABIGRACE T714  
**HALFMANN SYNERGY EO B059**  
 BECKTON EOLA U101 NB BECKTON NEBULA EN S347  
 BECKTON EOLA S011 NB  
 BECKTON NEW ERA Y194 BECKTON NEBULA P707  
 BKT LARKEISA T310 JC  
**HALFMANN ANKATA NE B005**  
 HALFMANN ANKATA PK Z718 MESSMER PACKER S008  
 HALFMANN ANKATA U393

**HerdBuilder 201 / Top 2% | GridMaster 50 / Top 6%**

CED	BW	WW	ADG	DMI	YW	MLK	ME	HPG	CEM	STY	MRB	REA
11	-4	66	0.24	1.50	104	26	-9	17	6	15	0.64	-0.16
11%	13%	24%	24%	24%	22%	16%	44%	2%	22%	4%	17%	36%

Age of Dam: 2 | Dam Weight 984 | dMPPA:106.86

**Average Daily Gain EPD**  
 Post-weaning growth expressed in pounds per day. A bull with a .20 ADG EPD would be expected to sire progeny that gained .10 lb/day more than a bull with a .10 ADG EPD provided were fed the same ration in the same environment, etc.

## 1

### HALFMANN KEYNOTE MA G516

02-12-2019 | CTH: G516 | A (100%) | #4127660

BROWN REVELATION P7021

BFCK CHEROKEE CNYN 4912  
BROWN MS VICILA M7799

#### BROWN ORACLE B112

BROWN MS P707 Y6648

BECKTON NEBULA P P707  
BROWN MS JULIAN W6579

BECKTON NEBULA EN S347

BECKTON NEBULA E P084  
BECKTON EOLA P530 NB

#### Individual Data

act. BW	85
SC	40.0
Frame	M+

#### BECKTON MARTA U079 NB

BECKTON MARTA S772 LO

BECKTON LOKI C M740  
BECKTON MARTA C314 JL

**HerdBuilder 204 / Top 4% | GridMaster 52 / Top 5%**

CED	BW	WW	ADG	DMI	YW	MLK	ME	HPG	CEM	STY	MRB	REA
16	-3.2	71	0.26	1.28	113	29	2	9	7	18	0.55	0.31
10%	23%	11%	17%	39%	12%	13%	58%	77%	44%	17%	18%	7%
Age of Dam: 11		Dam Weight: 1065		dMPPA: 106								



Lot 1

*Keynote checks all the boxes! He got better each time he went through the chute earning ratios of: 107 WW, 109 YW, 111 ADG, 112 IMF and 113 REA. This Top 5% profitability sire also predicts to improve Feed Efficiency with his unique combination of high ADG and low DMI. Plus, **Keynote** looks like your next herd bull - square hiped, big scrotal, wide based and deep ribbed. We like herd sires out of dams that have stood the test of time, and his dam passes that test with flying colors - maintaining a 106 MPPA as an 11-yr-old.*

## 2

### HALFMANN FRONTIER SE G475

02-09-2019 | CFH: G475 | A (100%) | #4127484

BROWN REVELATION P7021

BFCK CHEROKEE CNYN 4912  
BROWN MS VICILA M7799

#### BROWN ORACLE B112

BROWN MS P707 Y6648

BECKTON NEBULA P P707  
BROWN MS JULIAN W6579

BECKTON NEBULA J R475

BECKTON NEBULA M045  
BECKTON LARKEISAM138 JC

#### Individual Data

act. BW	75
SC	41.0
Frame	M+

#### BECKTON SERENA Z564 N

BECKTON SERENA W265 E

BECKTON EMPEROR T641 E2  
BECKTON SERENA T057 EM

**HerdBuilder 200 / Top 6% | GridMaster 55 / Top 1%**

CED	BW	WW	ADG	DMI	YW	MLK	ME	HPG	CEM	STY	MRB	REA
15	-2.7	75	0.36	1.64	134	21	7	7	7	17	0.61	0.35
19%	31%	5%	1%	75%	1%	83%	93%	96%	44%	32%	11%	5%
Age of Dam: 7		Dam Weight: 1445		dMPPA: 106								



Lot 2

*Frontier explores new levels of calf value with his 55 GridMaster which is well beyond the Top1%. This results from his tremendous gain and pay weight coupled with Marbling and REA EPDs that predict lots of carcass premiums. Not bad considering his life started as a largely "unnoticed" 75 lb. birthweight bull calf. **Frontier** is so dominant in the post-weaning traits, we almost forget he's a best 6% herdbuilder, who predicts to improve cow herd longevity and fertility and is out of a highly repeatable and productive dam.*



# RED ANGUS BULLS



## 3

### HALFMANN HEAD START FL G456

02-07-2019 | GKH: G456 | A (100%) | #4208372

BROWN REVELATION P7021

BFCK CHEROKEE CNYN 4912  
BROWN MS VICILA M7799

#### BROWN ORACLE B112

BROWN MS P707 Y6648

BECKTON NEBULA P P707  
BROWN MS JULIAN W6579

BECKTON NEW ERA Y194

BECKTON NEBULA P P707  
BKT LARKEISA T310 JC

#### HALFMANN FLOWER NE B062

HALFMANN DESTINY T351

5L DESTINATION 893-6215  
BROWN MS VACATION P6837

Individual Data

act BW 73

SC 37.0

Frame M-

**HerdBuilder 216 / Top 1% | GridMaster 51 / Top 5%**

CED	BW	WW	ADG	DMI	YW	MLK	ME	HPG	CEM	STY	MRB	REA
16	-5.0	66	0.29	1.66	113	21	8	10	7	20	0.56	0.43
9%	5%	25%	6%	76%	13%	80%	95%	72%	40%	5%	16%	3%

Age of Dam: 5 | Dam Weight: ET | dMPPA: 91

*Head Start will make your banker happy. He packages an EPD profile that predicts to simultaneously improve calving ease, growth, cow herd longevity, fertility quality grade, carcass weight and yield grade! That translates into more live calves, more pounds weaned, lower cow herd depreciation costs, and heavier carcasses earning bigger quality and yield grade premiums.*



## 4

### HALFMANN ASSET SF G476

02-09-2019 | GKH: G476 | A (100%) | #4208382

BROWN REVELATION P7021

BFCK CHEROKEE CNYN 4912  
BROWN MS VICILA M7799

#### BROWN ORACLE B112

BROWN MS P707 Y6648

BECKTON NEBULA P P707  
BROWN MS JULIAN W6579

BROWN SYNERGY X7838

BECKTON NEBULA P P707  
C-BAR & BROWN ABIGRACE T7

#### HALFMANN SUFFEINA SY B111

BKT SUFFEINA T500 EP

BECKTON EPIC K3 M606  
BECKTON SUFFEINA N844 LN

Individual Data

act BW ET

SC 39.0

Frame M

**HerdBuilder 207 / Top 3% | GridMaster 52 / Top 3%**

CED	BW	WW	ADG	DMI	YW	MLK	ME	HPG	CEM	STY	MRB	REA
17	-3.6	67	0.29	1.45	113	25	2	6	9	19	0.64	0.12
7%	17%	22%	6%	57%	12%	41%	61%	98%	8%	13%	8%	31%

Age of Dam: 5 | Dam Weight: ET | dMPPA: 107

*ASSET is as "Well-Rounded" as they come with a 17 CED to 113 YW spread and top 3% rank for both Red Angus Profit indices. We love our Synergy daughters and this bull's dam was one of our best - earning a 107 MPPA as a 5 year old. Like his outstanding half-brothers who sell as Lots 2 & 3, ASSET was used as a natural service sire on our registered Red Angus heifers. We had such a hard time picking between these bulls, that we just used all three.*

**Lots 1-4 are sired by Oracle - the only active sire in the Red Angus breed that combines a 205 or better HerdBuilder with a 56 or Better GridMaster!**



## 5

### Beckton Cardinal G554 D2

04-03-2019 | BKT : G554 | A (100%) | #4170908

TR DOUBLE EAGLE ZT220

TR RICARDO DOS  
BECKTON LANA U182 JC

#### BECKTON CARDINAL E673 L

BECKTON LARKABA A911 L | BECKTON LEGEND U331 E2  
BECKTON LARKABA T418 WA

BECKTON DOMINORA378 WZ

BECKTON DOMINOR Y005 V6  
BECKTON LANA Y541 W

Individual Data

act. BW	70
SC	36.0
Frame	M

#### BECKTON COCA E332 D

BECKTON COCA X701 N

BECKTON NEBULA T398 V3  
BECKTON COCA T499 SC

**HerdBuilder 217 / Top 1% | GridMaster 51 / Top 8%**

CED	BW	WW	ADG	DMI	YW	MLK	ME	HPG	CEM	STY	MRB	REA
19	-3.0	61	0.24	0.80	99	27	-2	13	11	18	0.50	0.14
1%	26%	46%	29%	12%	37%	29%	28%	13%	3%	22%	26%	27%

Age of Dam: 2 | Dam Weight: 825 | dMPPA: 104

Our 2020 sale offering features some truly elite calving ease bulls, and none more so than G554. This top 1% Calving Ease and HerdBuilder sire comes with extra muscle and depth of body. He was born unassisted out of a 2-yr-old dam, who has already earned a 104 MPPA in the breed's Foundation herd.



Lot 5

## 6

### BSF Accent G607 L4

04-07-2019 | BSF : G607 | B (99.90%) | #4171254

BECKTON ACCENT W180 C2

BECKTON CODY K1 P014  
BECKTON CHRISTY R046 CQ

#### BECKTON ACCENT B740 W3

BECKTON LANA Y033 W

BECKTON WARRIOR W534 N4  
BECKTON LANA W370 E

BECKTON LEGEND S670

BECKTON LANCER F442 T  
BECKTON KIT F468 JL

Individual Data

act. BW	75
SC	43.0
Frame	M

#### BSF JULIANNE X510 L

BSF JULIANNE R707 JL

BECKTON JULIAN G1 J526  
BSF REGUS L568 LN

**HerdBuilder 202 / Top 5% | GridMaster 49 / Top 33%**

CED	BW	WW	ADG	DMI	YW	MLK	ME	HPG	CEM	STY	MRB	REA
19	-5.1	58	0.2	1.03	90	26	-2	12	8	18	0.41	0.16
1%	5%	57%	61%	22%	60%	31%	32%	29%	22%	22%	44%	23%

Age of Dam: 9 | Dam Weight: 1085 | dMPPA: 104

If you need to breed heifers and you want to keep replacements, check out G607. In addition to best 1% Calving Ease, he predicts to improve heifer pregnancy rate, maternal calving ease all while reducing intake cow herd depreciation costs and mature cow maintenance energy needs.



Halfmann Flower NE B062, Dam of Lot 3

## 7

### Beckton Accent G189 A4

03-14-2019 | BKT : G189 | A (100%) | #4170962

BECKTON ACCENT W180 C2

BECKTON CODY K1 P014  
BECKTON CHRISTY R046 CQ

#### BECKTON ACCENT E172 L3

BECKTON INDIGO Y406 L

BECKTON LIKABLE U130 L2  
BECKTON INDIGO R745 WR

BECKTON ACCENT W180 C2

BECKTON CODY K1 P014  
BECKTON CHRISTY R046 CQ

Individual Data

act. BW	54
SC	37.0
Frame	M-

#### BECKTON CHRISTY E335 A

BECKTON CHRISTY Z587 C

BECKTON CLIFFTOP W692 E3  
BECKTON CHRISTY S475 EP

**HerdBuilder 191 / Top 12% | GridMaster 47 / Top 63%**

CED	BW	WW	ADG	DMI	YW	MLK	ME	HPG	CEM	STY	MRB	REA
14	-4.0	56	0.21	1.19	90	25	-2	10	4	20	0.23	0.09
33%	13%	64%	55%	32%	61%	45%	29%	71%	93%	6%	88%	38%

Age of Dam: 2 | Dam Weight: 820 | dMPPA: 98

Here's a well balanced, line-bred Accent W180 son that ranks in the top 1/3 of the breed for 7 traits.



Halfmann Suffeina SY B111, Dam of Lot 4



# RED ANGUS BULLS



Lot 8

8

## HALFMANN ARIAT LK G547

02-15-2019 | GKH : G547 | A (100%) | #4127386

5L ADVANTAGE 3267-221Y

BUF CRK THE RIGHT KIND U199  
5L ADINA 195-3267

### 5L BOURNE 117-48A

5L ROXIE 854-117

5L SIGNATURE 5615  
XXX ROXIE 854 MR

BECKTON HASTEN U108 J3

BECKTON HASTEN H S462  
BECKTON ENCINO S456 JC

### BECKTON LARKEISA X094 H

BKT LARKEISA U583 NB

BECKTON NEBULA L P093  
BKT LARKEISA E578 HB

#### Individual Data

act. BW	92
SC	40.0
Frame	M+

**HerdBuilder 186 / Top 18% | GridMaster 49 / Top 24%**

CED	BW	WW	ADG	DMI	YW	MLK	ME	HPG	CEM	STY	MRB	REA
12	-1.5	75	0.24	1.51	113	25	-4	16	4	17	0.48	-0.06
63%	54%	6%	31%	63%	12%	43%	19%	3%	94%	30%	29%	72%

Age of Dam: 9 | Dam Weight: 980 | dMPPA: 108

G547 leads off a powerful sire group by Bourne, who we added because of his feed efficiency, excellent replacement females and powerful phenotype. With ratios of: 117 WW, 112 YW, 116 IMF and 105 REA, G547 is as deep and thick as they come. Better yet, his moderate sized, experienced dam has maintained a 108 MPPA while taking up way less grass than her herd-mates.

9

## HALFMANN BOURNE MA G426

01-24-2019 | GKH : G426 | A (100%) | #4127290

5L ADVANTAGE 3267-221Y

BUF CRK THE RIGHT KIND U199  
5L ADINA 195-3267

### 5L BOURNE 117-48A

5L ROXIE 854-117

5L SIGNATURE 5615  
XXX ROXIE 854 MR

HALFMANN TAKEOVER DY C276

LSF TAKEOVER 9943W  
HALFMANN FLOWER NB Y596

### HALFMANN MATTIE TO E846

HALFMANN MATTIE EP C242

BECKTON EPIC R397 K  
HALFMANN MATTIE CH Y660

#### Individual Data

act. BW	67
SC	41.0
Frame	M+

**HerdBuilder 175 / Top 33% | GridMaster 49 / Top 23%**

CED	BW	WW	ADG	DMI	YW	MLK	ME	HPG	CEM	STY	MRB	REA
14	-3.9	70	0.24	1.59	109	26	-1	16	6	15	0.58	0.02
28%	14%	13%	31%	70%	19%	38%	35%	3%	76%	60%	14%	53%

Age of Dam: 2 | Dam Weight: 944 | dMPPA: 103

Another big scrotal Bourne son whose EPD profile predicts more calves weaned, more pregnant heifers, heavier pay weights, bigger carcass premiums and heavier producing replacements.



## 10

### HALFMANN BOURNE MI G519

02-12-2019 | CTH : G519 | A (100%) | #4127664

5L ADVANTAGE 3267-221Y

BUF CRK THE RIGHT KIND U199  
5LADINA 195-3267

#### 5L BOURNE 117-48A

5L ROXIE 854-117

5L SIGNATURE 5615  
XXX ROXIE 854 MR

BECKTON NEBULA P P707

BECKTON NEBULA M045  
BECKTON LANA M809 EP

#### HALFMANN MAIATA NB B047

BECKTON MAIATA U489 HT

BECKTON HERITAGE N013  
BKT MAIATA K503 EP

Individual Data	
act. BW	73
SC	36.0
Frame	M+

**HerdBuilder 173 / Top 35% | GridMaster 48 / Top 45%**

CED	BW	WW	ADG	DMI	YW	MLK	ME	HPG	CEM	STY	MRB	REA
15	-4.5	58	0.2	1.11	91	22	-3	14	6	15	0.55	-0.26
19%	8%	56%	60%	26%	59%	70%	23%	8%	67%	54%	18%	97%

Age of Dam: 5 | Dam Weight: 1220 | dMPPA: 97

Another Bourne son - and again a calving ease specialist that excels for low dry matter intake (DMI) low maintenance energy requirement and superior quality grade.



Lot 10

## 11

### HALFMANN NACHO CH G408

01-19-2019 | CFH : G408 | A (100%) | #4127438

5L ADVOCATE 817-14W

5L SIGNATURE 5615  
5L MARTA 345-817

#### 5L DEFENDER 560-30Z

5L BLACK ADINA 525-560

TC STOCKMAN 365  
5LADINA 293-525

BECKTON CLIFFTOP W692 E3

BKT CLIFFTOP TP R288  
BECKTON LYDIA S274 EP

#### HALFMANN CHIEF CT E715

HALFMANN CHIEF NB C253

BECKTON NEBULA P P707  
HALFMANN CHIEF MS Y616

Individual Data	
act. BW	71
SC	38.0
Frame	M+

**HerdBuilder 127 / Top 92% | GridMaster 50 / Top 16%**

CED	BW	WW	ADG	DMI	YW	MLK	ME	HPG	CEM	STY	MRB	REA
15	-4.3	68	0.27	2.09	110	28	-4	6	5	10	0.63	0.18
14%	10%	19%	15%	97%	16%	15%	20%	97%	86%	94%	9%	21%

Age of Dam: 2 | Dam Weight: 876 | dMPPA: 111

This Defender son comes with a 15 CED to 110 YW Spread and will sire calves that really press down the scales. He had incredible performance ratios of: 127 WW, 119 YW and 123 REA.



Lot 11

## 12

### HALFMANN CONCHO FR G427

01-24-2019 | CFH : G427 | A (100%) | #4127450

5L ADVOCATE 817-14W

5L SIGNATURE 5615  
5L MARTA 345-817

#### 5L DEFENDER 560-30Z

5L BLACK ADINA 525-560

TC STOCKMAN 365  
5LADINA 293-525

BECKTON JULIAN Z382 J7

BECKTON JULIAN X721 E6  
BECKTON LARKABA X064 J

#### HALFMANN FREYJA JL E902

BECKTON FREYJA W462 N

BECKTON NEBULA T054 H3  
BECKTON FREYJA T147 HI

Individual Data	
act. BW	75
SC	36.0
Frame	M+

**HerdBuilder 135 / Top 88% | GridMaster 50 / Top 14%**

CED	BW	WW	ADG	DMI	YW	MLK	ME	HPG	CEM	STY	MRB	REA
17	-4.0	65	0.25	1.75	105	25	-6	9	6	10	0.61	0.13
4%	13%	27%	25%	83%	25%	43%	11%	87%	73%	95%	11%	29%

Age of Dam: 2 | Dam Weight: 954 | dMPPA: 105

Another WideBody by Defender who packs a 112 WW ratio and 110 YW ratio into a best 4% Calving Ease and lightest 13% birthweight.



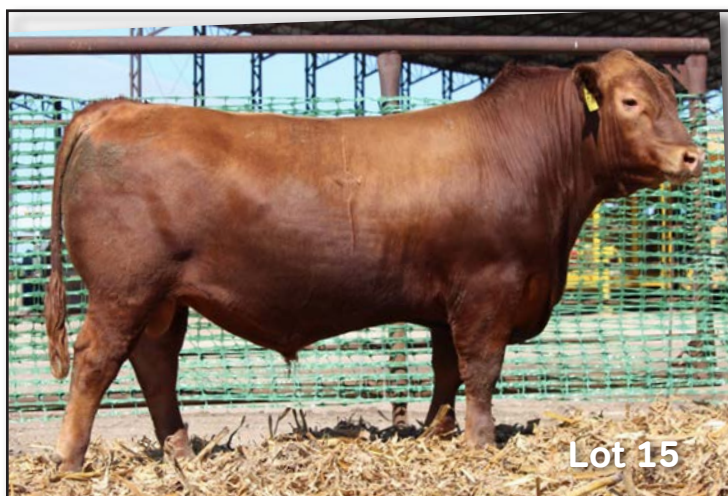
Lot 12



# RED ANGUS BULLS



Lot 13



Lot 15

13

## BSF Nebula G294 E4

03-20-2019 | BSF : G294 | B (99.90%) | #4171624

BECKTON NEBULA P P707

BECKTON NEBULA M045  
BECKTON LANA M809 EP

### BECKTON NEBULA B557 J3

BECKTON LARKABA T813 JC | BECKTON JUSTICE CH M056  
BECKTON LARKABA P645 JL

BECKTON EPIC Z674 E6

BECKTON EPIC U749 D5  
BECKTON INDIGO U504 EP

### BSF JULIA D276 E

BSF JULIA T623 JO

BECKTON JULIO L233  
BSF REGUS M006 NP

#### Individual Data

act BW	67
SC	33.5
Frame	M-

**HerdBuilder 180 / Top 25% | GridMaster 49 / Top 24%**

CED	BW	WW	ADG	DMI	YW	MLK	ME	HPG	CEM	STY	MRB	REA
14	-3.3	51	0.25	1.10	91	27	2	10	6	17	0.52	-0.11
32%	21%	80%	24%	26%	57%	29%	57%	57%	63%	31%	22%	82%

Age of Dam: 3 | Dam Weight: 980 | dMPPA: 99

Improved Feed Efficiency results when above average gains are combined with below average dry matter intake (DMI). G294 ranks in the top 1/4 of the breed for rapid gain and low dry matter intake.

14

## Beckton Accent G835 L5

05-28-2019 | BKT : G835 | A (100%) | #4170582

BECKTON ACCENT Y260 L3

BECKTON ACCENT W180 C2  
BECKTON LANA W463 L

### BECKTON ACCENT B150 N4

BKT LARKEISA S055 NB

BECKTON NEBULA P P707  
BECKTON LARKEISA P688 C

BECKTON LIKABLE Y124 L3

BECKTON LIKABLE U130 L2  
BKT PINE MARIE S802 LO

### BECKTON COCA C840 L

BECKTON COCA Z239 N

BECKTON NEBULA X603 J4  
BECKTON COCA X701 N

#### Individual Data

act BW	70
SC	36.0
Frame	M-

**HerdBuilder 218 / Top 1% | GridMaster 46 / Top 75%**

CED	BW	WW	ADG	DMI	YW	MLK	ME	HPG	CEM	STY	MRB	REA
18	-4.8	52	0.15	0.65	76	24	-4	12	8	21	0.50	-0.32
2%	6%	77%	91%	7%	86%	56%	21%	26%	20%	2%	26%	99%

Age of Dam: 4 | Dam Weight: 1010 | dMPPA: 97

G835's Top 1% HerdBuilder is supported by top 2% Stayability and best 1/4 of the breed ranks for heifer pregnancy rate, maternal calving ease and low maintenance energy requirement. You'll want to keep every heifer by this bull.

15

## BSF Likable G673 J6

04-15-2019 | BSF : G673 | B (99.20%) | #4171242

BECKTON LIKABLE Z057 L4

BECKTON LIKABLE X445 J3  
BECKTON MINOLA X107 L

### BECKTON LIKABLE B032 C5

BECKTON MONA Z270 C

BECKTON CLIFFTOP W577 E3  
BECKTON MONA U584 CD

BECKTON JET U473 L2

BECKTON JET L P491  
BECKTON LYDIA N047 LM

### BSF CHERISE X058 J

BSF CHERISE U771 CQ

BECKTON CHEROKEE N N479  
BSF REGUS L683 CT

#### Individual Data

act BW	76
SC	33.0
Frame	M+

**HerdBuilder 183 / Top 21% | GridMaster 51 / Top 5%**

CED	BW	WW	ADG	DMI	YW	MLK	ME	HPG	CEM	STY	MRB	REA
15	-3.1	62	0.31	1.26	113	27	6	12	6	16	0.42	-0.02
14%	24%	39%	2%	38%	13%	26%	87%	22%	69%	51%	42%	63%

Age of Dam: 9 | Dam Weight: 1080 | dMPPA: 105

This Likeable son could have started the sale - spreading his 15 CED to a top 2% ADG and triple-digit growth. His 9-yr-old dam is rock solid maintaining a 105 MPPA in the breed's foundation herd.



## 16

### HALFMANN TRIBUTE MI G495

02-11-2019 | GKH : G495 | A (100%) | #4127346

BROWN REVELATION P7021 BFCK CHEROKEE CNYN 4912  
BROWN MS VICILA M7799

#### BROWN ORACLE B112

BROWN MS P707 Y6648 BECKTON NEBULA P P707  
BROWN MS JULIAN W6579

LSF NIGHT CALVER 9921W MESSMER PACKER S008  
LSF DELLAP4078 U8051

#### HALFMANN MINERVA NC B053

HALFMANN MINERVA CH Y645 HALFMAN CHATEAU L610  
HALFMANN MINERVA U307

Individual Data	
act. BW	86
SC	35.0
Frame	M+

**HerdBuilder 200 / Top 6% | GridMaster 51 / Top 5%**

CED	BW	WW	ADG	DMI	YW	MLK	ME	HPG	CEM	STY	MRB	REA
15	-3.0	70	0.27	1.42	113	22	1	10	9	17	0.54	0.42
16%	26%	14%	12%	54%	12%	71%	53%	75%	8%	27%	19%	3%

Age of Dam: 5 | Dam Weight: 1030 | dMPPA: 103

**Lot 16-18 Half Brothers:** Uniformity is one of the best ways to add value to a calf crop, and simplify management of the cow herd. These three brothers all offer tremendous spread from 15 CED to triple-digit yearling weights and all rank in single digits for GridMaster index, which indicates higher calf values and post-weaning success. All three are out of sub-1200 lb cows that are top producers earning 103-106 MPPAs. Buy all three of these age-advantage Oracle sons and turn them out with your best 100 females!



Lot 16

## 17

### HALFMANN ORACLE BA G500

02-11-2019 | CFH : G500 | A (100%) | #4127502

BROWN REVELATION P7021 BFCK CHEROKEE CNYN 4912  
BROWN MS VICILA M7799

#### BROWN ORACLE B112

BROWN MS P707 Y6648 BECKTON NEBULA P P707  
BROWN MS JULIAN W6579

BECKTON CHEROKEE N N479 BFCK CHEROKEE CNYN 4912  
BECKTON DINAH C440 NM

#### BECKTON BARMAID U114 CQ

BECKTON BARMAID P323 HR BECKTON HERALD FV J537  
BECKTON BARMAID J012 CO

Individual Data	
act. BW	76
SC	39.0
Frame	M

**HerdBuilder 187 / Top 16% | GridMaster 51 / Top 9%**

CED	BW	WW	ADG	DMI	YW	MLK	ME	HPG	CEM	STY	MRB	REA
15	-2.6	71	0.23	1.25	108	24	-1	10	6	17	0.59	0.26
21%	32%	11%	38%	37%	20%	52%	36%	74%	79%	31%	13%	11%

Age of Dam: 11 | Dam Weight: 1170 | dMPPA: 106

## 18

### HALFMANN ORACLE RN G520

02-12-2019 | CFH : G520 | A (100%) | #4127522

BROWN REVELATION P7021 BFCK CHEROKEE CNYN 4912  
BROWN MS VICILA M7799

#### BROWN ORACLE B112

BROWN MS P707 Y6648 BECKTON NEBULA P P707  
BROWN MS JULIAN W6579

BROWN SYNERGY X7838

BECKTON NEBULA P P707  
C-BAR & BROWN ABIGRACE T7

#### HALFMANN ROBIN SY B056

HALFMANN ROBIN WR Y595 BECKTON WARRIOR N645 T1  
HALFMANN ROBIN W420

Individual Data	
act. BW	79
SC	39.0
Frame	M+

**HerdBuilder 183 / Top 20% | GridMaster 51 / Top 8%**

CED	BW	WW	ADG	DMI	YW	MLK	ME	HPG	CEM	STY	MRB	REA
15	-3.3	62	0.25	1.46	103	24	6	7	9	16	0.70	0.19
16%	21%	40%	21%	57%	30%	56%	90%	95%	8%	40%	4%	19%

Age of Dam: 5 | Dam Weight: 1125 | dMPPA: 104



Lot 19

## 19

### HALFMANN TENX MI G449

02-06-2019 | GKH : G449 | A (100%) | #4127310

REDHILL TEN X 104U 190A AAR TEN X 7008 SA  
RED HILL B571 BARMAID 104U

#### RHF-RHR 190A TENX 49D

REDHILL 151Y AMBER 134B REDHILL U199 LANCER 151Y  
RHF-CCCH 4X AMBER 46Z

BECKTON EPIC R397 K BECKTON EPIC K F075  
BECKTON KIT F468 JL

#### HALFMANN MINERVA EP G254

BECKTON MINERVA W081 N BECKTON NEBULA G S237  
BECKTON MINERVA F495 CH

Individual Data	
act. BW	72
SC	36.0
Frame	M

**HerdBuilder 161 / Top 57% | GridMaster 49 / Top 28%**

CED	BW	WW	ADG	DMI	YW	MLK	ME	HPG	CEM	STY	MRB	REA
13	-3.6	53	0.21	0.81	87	25	0	12	7	14	0.55	-0.20
38%	17%	74%	54%	12%	67%	42%	46%	29%	43%	70%	18%	93%

Age of Dam: 4 | Dam Weight: 1165 | dMPPA: 96

You'll find several sons of the Red Hill TENX 49D bull in this sale, and G449 is one of the best. We used 49D as an outcross sire, his grandsire is the popular Angus sire, AA R Ten X 7008 SA who is proven to improve Feedlot and Carcass traits.



# RED ANGUS BULLS

20

## BSF Cardinal G741 C2

04-26-2019 | BSF : G741 | B (99.80%) | #4171602

TR DOUBLE EAGLE ZT220

TR RICARDO DOS  
BECKTON LANA U182 JC

### BECKTON CARDINAL E673 L

BECKTON LARKABA A911 L

BECKTON LEGEND U331 E2  
BECKTON LARKABAT418 WA

BECKTON CARDINAL B074 N

TR DOUBLE EAGLE ZT220  
BKT PINE MARIE Z250 N

### BSF CHERISE D053 C

BSF CHERISE B348 L

BECKTON LIKABLE U130 L2  
BSF CHERISE X058 J

Individual Data	
act. BW	56
SC	35.0
Frame	M

**HerdBuilder 211 / Top 2% | GridMaster 49 / Top 34%**

CED	BW	WW	ADG	DMI	YW	MLK	ME	HPG	CEM	STY	MRB	REA
22	-7.5	54	0.21	0.87	86	26	0	12	12	17	0.40	0.13
1%	1%	74%	59%	14%	68%	38%	43%	24%	1%	26%	46%	29%

Age of Dam: 3 | Dam Weight: 870 | dMPPA: 99

This "Sleep-all-Night" heifer bull ranks in the top 2% for HerdBuilder profitability and non wonder - with his lowest 14% rank for Dry Matter Intake (DMI) your annual cow costs will be reduced. And you'll bring more live calves to market with his 1% ranks for both direct (CED) and maternal (CEM) calving ease.



Lot 22

23

## Beckton Clifftop G438 E7

03-27-2019 | BKT : G438 | A (100%) | #4228532

BECKTON CLIFFTOP C572 N5

BECKTON CLIFFTOP Y012 C4  
BKT PINE MARIE U454 NB

### BECKTON CLIFFTOP E077 L6

BECKTON LARKABA C217 L

BECKTON LEGEND S670  
BECKTON LARKABA U062 CB

BECKTON CLIFFTOP Y012 C4

BECKTON CLIFFTOP W692 E3  
BECKTON LANA W240 C

### BECKTON LARKABA E835 E

BECKTON LARKABAA751 L

BECKTON LEGEND U331 E2  
BECKTON LARKABA W868 J

Individual Data	
act. BW	56
SC	32.5
Frame	S+

**HerdBuilder 180 / Top 25% | GridMaster 48 / Top 34%**

CED	BW	WW	ADG	DMI	YW	MLK	ME	HPG	CEM	STY	MRB	REA
18	-4.2	58	0.21	0.87	92	29	-6	9	8	16	0.41	-0.13
3%	11%	55%	53%	14%	55%	13%	12%	81%	25%	50%	44%	86%

Age of Dam: 2 | Dam Weight: 745 | dMPPA:

21

## Beckton Cardinal G087 C3

03-05-2019 | BKT : G087 | A (100%) | #4170986

BECKTON CARDINAL B074 N

TR DOUBLE EAGLE ZT220  
BKT PINE MARIE Z250 N

### BECKTON CARDINAL E381 J2

BECKTON LARKABA W868 J

BECKTON JULIAN G5 S107  
BECKTON LARKABA S663 JE

BECKTON CARDINAL B074 N

TR DOUBLE EAGLE ZT220  
BKT PINE MARIE Z250 N

### BECKTON ROSE E404 C

BECKTON ROSE Z048 N

BECKTON NEBULA X353 E3  
BECKTON ROSE X662 C

Individual Data	
act. BW	50
SC	36.5
Frame	M-

**HerdBuilder 188 / Top 15% | GridMaster 49 / Top 30%**

CED	BW	WW	ADG	DMI	YW	MLK	ME	HPG	CEM	STY	MRB	REA
19	-6.0	49	0.25	0.89	88	27	0	12	10	16	0.29	0.00
1%	2%	86%	27%	15%	64%	25%	45%	25%	7%	48%	74%	58%

Age of Dam: 2 | Dam Weight: 825 | dMPPA: 99

22

## Beckton Heritage G245 N5

03-17-2019 | BKT : G245 | A (100%) | #4170322

BECKTON HERITAGE A767 C3

BECKTON HERITAGE X356 E2  
BECKTON ROSE W816 C

### BECKTON HERITAGE D195 L4

BECKTON SUSAN W846 L

BECKTON LOKI CL S284  
BECKTON SUSAN S684 JJ

BECKTON NEBULA T269 E2

BECKTON NEBULA M045  
BECKTON RUTH M967 EP

### BECKTON LAKME Z405 N

BECKTON LAKME T692 EP

BECKTON EPIC KM M115  
BECKTON LAKME P513 EP

Individual Data	
act. BW	77
SC	36.5
Frame	M

**HerdBuilder 163 / Top 54% | GridMaster 48 / Top 34%**

CED	BW	WW	ADG	DMI	YW	MLK	ME	HPG	CEM	STY	MRB	REA
13	-2.6	64	0.27	1.35	108	29	3	9	7	15	0.32	-0.19
36%	32%	31%	12%	47%	20%	13%	68%	80%	49%	58%	66%	92%

Age of Dam: 7 | Dam Weight: 1280 | dMPPA: 106

Long Bodied, well-muscled Heritage son that continues to move in front of his contemporaries - earning performance ratios of: 106 weaning, 108 yearling and 110 ADG.

24

## BSF Accent G752 W4

04-30-2019 | BSF : G752 | B (99.80%) | #4171584

BECKTON ACCENT W180 C2

BECKTON CODY K1 P014  
BECKTON CHRISTY R046 CQ

### BECKTON LIKABLE B549 N4

BECKTON MINERVA Y654 N

BECKTON NEBULA T398 V3  
BECKTON MINERVA M369 LO

BECKTON WARRIOR Y108 E5

BECKTON WARRIOR W534 N4  
BECKTON SUSAN W058 E

### BSF OLIVE D523 W

BSF OLIVE A863 C

BECKTON CLIFFTOP Y012 C4  
BSF OLIVE Y105 L

Individual Data	
act. BW	66
SC	35.0
Frame	M

**HerdBuilder 186 / Top 17% | GridMaster 48 / Top 34%**

CED	BW	WW	ADG	DMI	YW	MLK	ME	HPG	CEM	STY	MRB	REA
16	-3.9	63	0.25	1.33	103	28	1	11	8	17	0.32	-0.01
7%	14%	38%	22%	44%	29%	15%	54%	44%	35%	35%	66%	62%

Age of Dam: 3 | Dam Weight: 985 | dMPPA: 101

Another Likable son that has sufficient calving ease and low birth weight for your heifers, yet delivers triple-digit growth so he can profitably transition into serving the cow herd after he outgrows the heifers.



## 25 HALFMAN ACCENT SI G469

02-09-2019 | CFH : G469 | A (100%) | #4127474

BECKTON ACCENT Y312 N3 | BECKTON ACCENT U777 C2  
BECKTON ACCENT Y312 N3 | BKT LARKEISA S055 NB

### BECKTON ACCENT C216 D4

BECKTON BELGA R716 DM | BECKTON DOMINOR ZC M919  
BECKTON BELGA K285 JL

BIEBER H HUGHES W109 | BASIN HOBO 0545  
BASIN ROSE 06T0

### HALFMANN SIERRA HG E821

HALFMANN SIERRA NB X467 | BECKTON NEBULA P P707  
HALFMANN SIERRA U330

Individual Data	
act. BW	70
SC	35.0
Frame	M+

**HerdBuilder 185 / Top 18% | GridMaster 48 / Top 51%**

CED	BW	WW	ADG	DMI	YW	MLK	ME	HPG	CEM	STY	MRB	REA
15	-3.8	61	0.21	1.35	95	26	0	12	8	17	0.56	-0.19
16%	15%	45%	54%	46%	49%	39%	40%	33%	32%	28%	16%	92%

Age of Dam: 2 | Dam Weight: 1015 | dMPPA: 103

Plenty of shape and muscle packaged in a low birth weight, high calving ease son of Accent C216. G469 got better with each trip through the chute earning ratios of: 108 WW, 106 YW, 122 IMF and 106 REA.



Lot 25

## 26 HALFMAN ACCENT GR G484

02-10-2019 | CTH : G484 | A (100%) | #4127650

BECKTON ACCENT U777 C2 | BECKTON CODY K1 P014  
BECKTON SUSAN R022 CQ

### BECKTON ACCENT Y312 N3

BKT LARKEISA S055 NB | BECKTON NEBULA P P707  
BECKTON LARKEISA P688 C

HALFMANN NEBULAAL Y593 | BECKTON NEBULA P P707  
HALFMANN ALEXIS U352

### HALFMANN GRANDE NB B090

HALFMANN GRANDE I550 | HALFMANN JR 107 J350  
HALFMN RAMBO 501 GRANDE

Individual Data	
act. BW	65
SC	36.0
Frame	M

**HerdBuilder 159 / Top 61% | GridMaster 46 / Top 80%**

CED	BW	WW	ADG	DMI	YW	MLK	ME	HPG	CEM	STY	MRB	REA
18	-6.4	50	0.2	1.31	81	26	-3	12	8	14	0.44	-0.16
3%	1%	84%	66%	42%	78%	35%	26%	26%	27%	73%	37%	89%

Age of Dam: 5 | Dam Weight: 1165 | dMPPA: 97



Lot 26

**Lot 26-28 Half Brothers:** Build a moderate framed, easy fleshing cow herd with these deep-ribbed, soft made sons of Accent Y312. Lot 26 offers the best 3% calving ease and lowest 1% birthweight. Lot 27 & 28 are actually 3/4 brothers.

## 27 HALFMAN ACCENT MA G534

02-13-2019 | GKH : G534 | A (100%) | #4127378

BECKTON ACCENT U777 C2 | BECKTON CODY K1 P014  
BECKTON SUSAN R022 CQ

### BECKTON ACCENT Y312 N3

BKT LARKEISA S055 NB | BECKTON NEBULA P P707  
BECKTON LARKEISA P688 C

BECKTON EPIC R397 K | BECKTON EPIC K F075  
BECKTON KIT F468 JL

### HALFMANN MATTIE EP C242

HALFMANN MATTIE CH Y660 | HALFMANN CHATEAU U335  
HALFMANN MATTIE U334

Individual Data	
act. BW	84
SC	39.0
Frame	M+

**HerdBuilder 157 / Top 64% | GridMaster 48 / Top 47%**

CED	BW	WW	ADG	DMI	YW	MLK	ME	HPG	CEM	STY	MRB	REA
13	-3.2	60	0.24	1.45	98	26	-5	14	6	14	0.59	-0.22
35%	23%	50%	33%	56%	42%	39%	15%	6%	63%	76%	13%	95%

Age of Dam: 4 | Dam Weight: 1060 | dMPPA: 101

## 28 HALFMAN ACCENT SI G488

02-10-2019 | CFH : G488 | A (100%) | #4127490

BECKTON ACCENT U777 C2 | BECKTON CODY K1 P014  
BECKTON SUSAN R022 CQ

### BECKTON ACCENT Y312 N3

BKT LARKEISA S055 NB | BECKTON NEBULA P P707  
BECKTON LARKEISA P688 C

BECKTON EPIC R397 K | BECKTON EPIC K F075  
BECKTON KIT F468 JL

### HALFMANN SIERRA EP C278

HALFMANN SIERRA MS Z743 | HALFMANN M-STATEMENT AL  
HALFMANN SIERRA NB X467

Individual Data	
act. BW	74
SC	38.0
Frame	M

**HerdBuilder 151 / Top 73% | GridMaster 48 / Top 52%**

CED	BW	WW	ADG	DMI	YW	MLK	ME	HPG	CEM	STY	MRB	REA
14	-3.2	62	0.23	1.44	99	27	0	13	7	13	0.42	0.01
33%	23%	39%	38%	55%	38%	28%	47%	11%	60%	79%	42%	55%

Age of Dam: 4 | Dam Weight: 1245 | dMPPA: 104



# RED ANGUS BULLS



Lot 29



Lot 30

29

## HALFMANN TOPGUN AQ G506

02-11-2019 | GKH : G506 | A (100%) | #4127354

5L ADVANTAGE 3267-221Y

BUF CRK THE RIGHT KIND U199  
5L ADINA 195-3267

### 5L TOPGUN 560-65B

5L BLACK ADINA 525-560

TC STOCKMAN 365  
5L ADINA 293-525

OLC CHATEAU K465

GLACIER CHATEAU 744  
BIEBER ELINE H649

### HALFMANN AQUILA U391

2KBR M410

BUF CRK MARATHON 6156  
LCC AQUILA LA121

#### Individual Data

act. BW	75
SC	39.0
Frame	M

HerdBuilder 147 / Top 77% | GridMaster 48 / Top 48%

CED	BW	WW	ADG	DMI	YW	MLK	ME	HPG	CEM	STY	MRB	REA
16	-4.2	56	0.21	1.34	89	19	3	11	9	12	0.43	0.16
12%	11%	66%	55%	46%	62%	90%	70%	37%	10%	86%	41%	23%

Age of Dam: 11 | Dam Weight: 1190 | dMPPA: 99

We used TopGun due to his high accuracy calving ease, superior structure and single digit ranks for the important cow herd building traits of: heifer pregnancy rate, maternal calving ease and low maintenance energy requirements. G506 was raised by a high longevity dam who can match fertility and production with cows have her age.

30

## HALFMANN TOPGUN DU G503

02-11-2019 | GKH : G503 | A (100%) | #4127350

5L ADVANTAGE 3267-221Y

BUF CRK THE RIGHT KIND U199  
5L ADINA 195-3267

### 5L TOPGUN 560-65B

5L BLACK ADINA 525-560

TC STOCKMAN 365  
5L ADINA 293-525

HALFMANN SYNERGY MN A883

BROWN SYNERGY X7838  
HALFMANN MONAMS X468

### HALFMANN DUTCHESS SY 339D

DAMAR N312 DUTCHESS A339

LORENZEN WHAT'S GOOD  
DFRA DUTCHESS N312

#### Individual Data


act. BW	77
SC	36.0
Frame	M

HerdBuilder 163 / Top 53% | GridMaster 49 / Top 31%

CED	BW	WW	ADG	DMI	YW	MLK	ME	HPG	CEM	STY	MRB	REA
16	-4.4	54	0.21	1.18	87	19	-6	12	8	13	0.43	0.20
9%	9%	73%	55%	31%	66%	92%	14%	22%	20%	78%	41%	18%

Age of Dam: 3 | Dam Weight: 1065 | dMPPA: 97

TopGun is Select Sires' "Go-To" heifer project bull and ranks in the lowest 2% of Red Angus for birthweight with a "Rock Solid" accuracy of 88%. This guy is loaded with shape and natural thickness despite his best 9% rank for both calving ease and low birth weight.



**JIM KOLLMAN**  
Superior Livestock Representative

PO Box 5961  
San Angelo, TX  
76902  
432-770-5535

[www.superiorlivestock.com](http://www.superiorlivestock.com)

We are proud to be an approved supplier of Superior Progressive Genetics! Superior Rep, Jim Kollman, from San Angelo does a great job getting our customers well paid for their investment in superior Red Angus genetics. Watch for Halfmann sired calves selling on Superior Livestock Video Auctions.

31

## BSF Julian G742 N9

04-27-2019 | BSF : G742 | B (99.80%) | #4171706

BECKTON JULIAN Z382 J7

BECKTON JULIAN X721 E6  
BECKTON LARKABA X064 J

### BECKTON JULIAN E423 N8

BECKTON BELGA B004 N

BECKTON NEBULA Z111 N5  
BECKTON BELGA Z031 N

BECKTON NEBULA X267 J3

BECKTON NEBULA T269 E2  
BECKTON INDIGO T613 JT

### BSF HUSTELLE E785 N

BSF HUSTELLE U447 HH

BECKTON HALFMNNHUSTLR F  
BSF REGUS G191

#### Individual Data

act. BW	50
SC	37.0
Frame	M

HerdBuilder 196 / Top 9% | GridMaster 45 / Top 86%

CED	BW	WW	ADG	DMI	YW	MLK	ME	HPG	CEM	STY	MRB	REA
19	-6.5	49	0.14	0.82	72	29	-3	12	10	18	0.42	-0.37
1%	1%	86%	92%	12%	90%	13%	27%	34%	5%	19%	42%	99%

Age of Dam: 2 | Dam Weight: 780 | dMPPA: 99



## 32

### WCRA Julian G154

04-26-2019 | WCRA : G154 | A (100%) | #4149838

BECKTON JULIAN X465 J5      BECKTON JULIAN G5 S107  
BECKTON SUFFEINA P643 J

#### BECKTON JULIAN A434 N6

BECKTON LAKME T689 NX      BECKTON NEXUS L016  
BECKTON LAKME M669 EP

BECKTON NEBULA P P707      BECKTON NEBULA M045  
BECKTON LANA M809 EP

#### WCRA SIRRA E120 N

BECKTON SIERRA C254 W      BECKTON WARRIOR Y108 E5  
BECKTON SIERRA S065 LO

Individual Data	
act. BW	68
SC	40.0
Frame	M

**HerdBuilder 172 / Top 38% | GridMaster 49 / Top 28%**

CED	BW	WW	ADG	DMI	YW	MLK	ME	HPG	CEM	STY	MRB	REA
15	-3.6	61	0.26	1.48	102	25	2	13	6	15	0.51	-0.15
17%	17%	46%	17%	60%	31%	42%	58%	21%	65%	56%	24%	88%

Age of Dam: 2 | Dam Weight: 750 | dMPPA:

Julian x Nebula P707 are two of the most trusted sire lines in Red Angus breed history. G154 spreads his best 17% Calving ease to Triple Digit growth and best 17% average daily gain (ADG) - thanks in large part to his performance ratios of 110 for both weaning and yearling.

## 34

### Beckton Likable G521 L6

04-01-2019 | BKT : G521 | A (100%) | #4170790

BECKTON LIKABLE Z057 L4      BECKTON LIKABLE X445 J3  
BECKTON MINOLA X107 L

#### BECKTON LIKABLE B032 C5

BECKTON MONA Z270 C      BECKTON CLIFFTOP W577 E3  
BECKTON MONA U584 CD

BECKTON LIKABLE Z057 L4      BECKTON LIKABLE X445 J3  
BECKTON MINOLA X107 L

#### BECKTON MINERVA D379 L

BECKTON MINERVA W662 E      BECKTON EPIC T330 L5  
BECKTON MINERVA T318 JC

Individual Data	
act. BW	63
SC	31.0
Frame	M+

**HerdBuilder 182 / Top 22% | GridMaster 50 / Top 18%**

CED	BW	WW	ADG	DMI	YW	MLK	ME	HPG	CEM	STY	MRB	REA
18	-6.2	43	0.27	1.06	86	25	3	11	6	16	0.55	-0.27
2%	1%	95%	15%	23%	70%	40%	67%	42%	65%	42%	18%	97%

Age of Dam: 3 | Dam Weight: 1025 | dMPPA: 99

## 33

### Beckton Nebula G823 N4

05-22-2019 | BKT : G823 | A (100%) | #4170760

BECKTON NEBULA P P707      BECKTON NEBULA M045  
BECKTON LANA M809 EP

#### BECKTON NEBULA B557 J3

BECKTON LARKABA T813 JC      BECKTON JUSTICE CH M056  
BECKTON LARKABA P645 JL

BECKTON NEBULA Z111 N5      BECKTON NEBULA X096 N4  
BECKTON MINOLA X670 N

#### BECKTON LARKABA D757 N

BECKTON LARKABA P645 JL      BECKTON JULIAN GG B571  
BECKTON LARKABA L312 LN

Individual Data	
act. BW	73
SC	37.5
Frame	M-

**HerdBuilder 192 / Top 11% | GridMaster 51 / Top 10%**

CED	BW	WW	ADG	DMI	YW	MLK	ME	HPG	CEM	STY	MRB	REA
15	-4.2	56	0.24	0.78	94	26	1	11	5	18	0.57	-0.07
21%	11%	64%	34%	11%	51%	34%	55%	54%	82%	21%	15%	74%

Age of Dam: 3 | Dam Weight: 950 | dMPPA: 100

G823 will help your bottom line regardless of whether you sell calves in the fall, retain replacements or retain ownership. His 11% and 10% ranks for HerdBuilder and GridMaster respectively are no doubt aided by his superior calving ease, cow herd longevity, marbling and low dry matter intake.

## 35

### HALFMANN BOURNE RN G498

02-11-2019 | CFH : G498 | A (100%) | #4127498

5L ADVANTAGE 3267-221Y      BUF CRK THE RIGHT KIND U199  
5L ADINA 195-3267

#### 5L BOURNE 117-48A

5L ROXIE 854-117      5L SIGNATURE 5615  
XXX ROXIE 854 MR

BECKTON JULIAN A086 C6      BECKTON JULIAN X465 J5  
BKT PINE MARIE W102 C

#### HALFMANN ROBIN JL C316

HALFMANN ROBIN SY A832      BROWN SYNERGY X7838  
HALFMANN ROBIN I551

Individual Data	
act. BW	73
SC	40.0
Frame	M

**HerdBuilder 180 / Top 25% | GridMaster 49 / Top 33%**

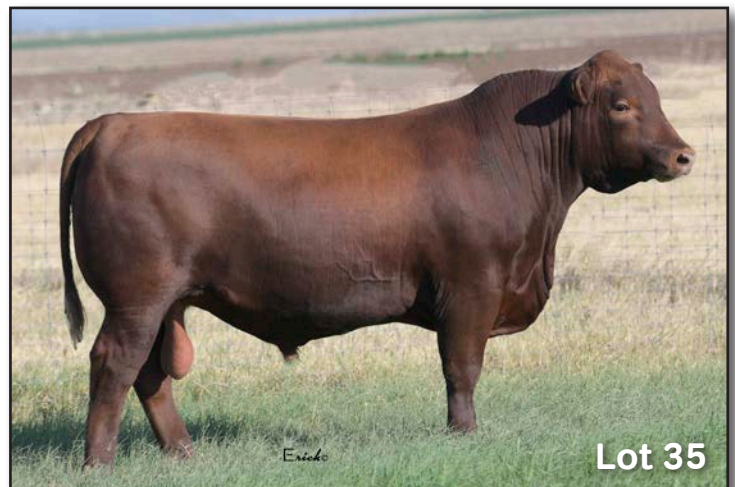
CED	BW	WW	ADG	DMI	YW	MLK	ME	HPG	CEM	STY	MRB	REA
16	-4.7	63	0.21	1.26	98	27	0	16	7	15	0.53	-0.11
10%	7%	34%	51%	38%	42%	22%	46%	2%	56%	56%	21%	82%

Age of Dam: 4 | Dam Weight: 1190 | dMPPA: 98

## ROBERTSON LIVESTOCK

Donnie Robertson  
Certified Ultrasound Technician  
Registered, Commercial & Feedlot  
4661 PR 4055 • Normangee, TX 77871  
Cell: 936.581.1844 • Email: crober86@aol.com

Red Angus EPDs have utilized Ultrasound data for over 20 years to identify variation in marbling, ribeye area and backfat. At Halfmann Red Angus we continue to invest in Robertson Livestock for the collection of this important data so that our customers can make the best informed bull selection decisions.



Lot 35



# RED ANGUS BULLS



Lot 36

## 37 HALFMANNTOPGUN CH G417

01-21-2019 | CTH : G417 | A (100%) | #4127632

5L ADVANTAGE 3267-221Y

BUF CRK THE RIGHT KIND U199  
5L ADINA 195-3267

### 5L TOPGUN 560-65B

5L BLACK ADINA 525-560

TC STOCKMAN 365  
5L ADINA 293-525

LSF NIGHT CALVER 9921W

MESSMER PACKER S008  
LSF DELLAP4078 U8051

### HALFMANN CHIEF NC E712

HALFMANN CHIEF NE C257

BECKTON NEW ERA Y194  
HALFMANN CHIEF WR Y591

Individual Data

act. BW 82

SC 41.0

Frame M+

HerdBuilder 166 / Top 48% | GridMaster 49 / Top 21%

CED	BW	WW	ADG	DMI	YW	MLK	ME	HPG	CEM	STY	MRB	REA
16	-2.9	69	0.24	1.41	107	23	-1	15	9	13	0.51	0.15
10%	28%	15%	34%	52%	21%	62%	35%	5%	15%	83%	24%	26%

Age of Dam: 2 | Dam Weight: 1080 | dMPPA: 107

**Lot 37-38 - TopGun Sons:** You'd expect these sons of Select Sires' "Sleep-All-Night" calving ease bull, TopGun to come with top 10% or better calving ease, but they more than keep up in the calf value traits of gain, marbling and ribeye area. Better yet, you'll want to keep all the daughters with their combination of elite heifer pregnancy, maternal calving ease, low cow maintenance energy requirement.

## 39 HALFMANNTOPGUN SI G412

01-20-2019 | CFH : G412 | A (100%) | #4127444

5L ADVOCATE 817-14W

5L SIGNATURE 5615  
5L MARTA 345-817

### 5L DEFENDER 560-30Z

5L BLACK ADINA 525-560

TC STOCKMAN 365  
5L ADINA 293-525

BECKTON ACCENT W180 C2

BECKTON CODY K1 P014  
BECKTON CHRISTY R046 CQ

### HALFMANN SIERRA AC E721

HALFMANN SIERRA NB X467

BECKTON NEBULA P P707  
HALFMANN SIERRA U330

Individual Data

act. BW 66

SC 38.0

Frame M

HerdBuilder 158 / Top 62% | GridMaster 49 / Top 23%

CED	BW	WW	ADG	DMI	YW	MLK	ME	HPG	CEM	STY	MRB	REA
17	-4.9	65	0.24	1.99	104	24	-5	9	5	14	0.57	0.25
6%	6%	28%	30%	94%	28%	50%	18%	79%	82%	75%	15%	12%

Age of Dam: 2 | Dam Weight: 948 | dMPPA: 106

**Lot 39-40 - Three/Quarter Brothers:** These Defender sons are similar in more ways than just their pedigree. Both are out of "Rising Stars" - young cows that have already impacted our herd with superior production. Both offer excellent calving ease without sacrificing payweight, gain, or big, well marbled loins.

## 36 HALFMANNTOPGUN AL G504

02-11-2019 | CFH : G504 | A (100%) | #4127508

5L ADVANTAGE 3267-221Y

BUF CRK THE RIGHT KIND U199  
5L ADINA 195-3267

### 5L BOURNE 117-48A

5L ROXIE 854-117

5L SIGNATURE 5615  
XXX ROXIE 854 MR

LSF TAKEOVER 9943W HXC CONQUEST 4405P

LSF WIDELoad R5014 U8061

### HALFMANN ALEXIS TO B038

HALFMANN ALEXIS NB Y602

BECKTON NEBULA P P707  
HALFMANN MISS ALEXIS

Individual Data

act. BW 87

SC 40.0

Frame M

HerdBuilder 149 / Top 75% | GridMaster 49 / Top 24%

CED	BW	WW	ADG	DMI	YW	MLK	ME	HPG	CEM	STY	MRB	REA
11	-3.5	65	0.22	1.30	100	29	5	16	3	13	0.56	0.04
65%	19%	28%	46%	42%	35%	14%	82%	2%	96%	79%	16%	48%

Age of Dam: 5 | Dam Weight: 1250 | dMPPA: 109

## 38 HALFMANNTOPGUN SI G546

02-15-2019 | CFH : G546 | A (100%) | #4127548

5L ADVANTAGE 3267-221Y

BUF CRK THE RIGHT KIND U199  
5L ADINA 195-3267

### 5L TOPGUN 560-65B

5L BLACK ADINA 525-560

TC STOCKMAN 365  
5L ADINA 293-525

BROWN SYNERGY X7838

BECKTON NEBULA P P707  
C-BAR & BROWN ABIGRACE T7

### HALFMANN SIERRA SY A900

HALFMANN SIERRA CH X563

HALFMANN CHATEAU L610  
OLC SIERRA R417

Individual Data

act. BW 75

SC 36.0

Frame M

HerdBuilder 173 / Top 36% | GridMaster 49 / Top 23%

CED	BW	WW	ADG	DMI	YW	MLK	ME	HPG	CEM	STY	MRB	REA
17	-4.5	63	0.23	1.51	99	25	-2	12	10	14	0.54	0.15
6%	8%	36%	40%	62%	38%	40%	30%	26%	5%	73%	19%	26%

Age of Dam: 6 | Dam Weight: 1210 | dMPPA: 110

## 40 HALFMANNTOPGUN DEFENDER AL G543

02-14-2019 | CFH : G543 | A (100%) | #4127544

5L ADVOCATE 817-14W

5L SIGNATURE 5615  
5L MARTA 345-817

### 5L DEFENDER 560-30Z

5L BLACK ADINA 525-560

TC STOCKMAN 365  
5L ADINA 293-525

BECKTON ACCENT W180 C2

BECKTON CODY K1 P014  
BECKTON CHRISTY R046 CQ

### HALFMANN ALEXIS AC D460

HALFMANN ALEXIS TO B038

LSF TAKEOVER 9943W  
HALFMANN ALEXIS NB Y602

Individual Data

act. BW 79

SC 39.0

Frame L-

HerdBuilder 135 / Top 88% | GridMaster 49 / Top 21%

CED	BW	WW	ADG	DMI	YW	MLK	ME	HPG	CEM	STY	MRB	REA
15	-4.0	60	0.23	1.70	97	25	0	10	4	11	0.64	0.10
15%	13%	50%	36%	80%	44%	47%	42%	60%	92%	90%	8%	35%

Age of Dam: 3 | Dam Weight: 1115 | dMPPA: 103



## 41

### BSF Epic G431 N7

03-27-2019 | BSF : G431 | B (99.90%) | #4245948

BECKTON EPIC X464 L5

BECKTON EPIC K6 S569  
BECKTON LANA M393 LN

#### BECKTON EPIC B310 J6

BECKTON MINERVA Y116 J

BECKTON JULIAN W743 H5  
BECKTON MINERVA W081 N

BECKTON NEBULAA773 L4

BECKTON NEBULA T398 V3  
BECKTON MONA X022 L

#### BSF NEBULANN D554 N

BSF NEBULANN A433 N

BECKTON NEBULA W778 J4  
BSF NEBULANN U242 NB

#### Individual Data

act. BW	64
SC	37.5
Frame	M

**HerdBuilder 193 / Top 11% | GridMaster 47 / Top 56%**

CED	BW	WW	ADG	DMI	YW	MLK	ME	HPG	CEM	STY	MRB	REA
14	-2.5	63	0.2	1.11	95	25	-1	12	6	18	0.32	-0.11
26%	35%	37%	62%	26%	49%	45%	34%	23%	65%	14%	66%	82%

Age of Dam: 3 | Dam Weight: 920 | dMPPA: 101

## 43

### Beckton Scamp G729 E6

04-24-2019 | BSF : G729 | A (100%) | #4171638

BECKTON SCAMP A627 J4

BECKTON SCAMP X494 E3  
BECKTON SERENA R023 JC

#### BECKTON SCAMP D325 N5

BECKTON TAMARA Y039 N

BECKTON NEBULA W065 C3  
BECKTON TAMARA W232 J

BECKTON EMPEROR Y459 J3

BECKTON EMPEROR T641 E2  
BECKTON INDIGO S354 JT

#### BECKTON ANGEL D155 E

BECKTON ANGEL U746 CD

BECKTON CODY K1 P014  
BECKTON ANGEL H164 LO

#### Individual Data

act. BW	69
SC	33.0
Frame	M+

**HerdBuilder 159 / Top 61% | GridMaster 48 / Top 51%**

CED	BW	WW	ADG	DMI	YW	MLK	ME	HPG	CEM	STY	MRB	REA
17	-4.5	55	0.2	0.83	87	28	-2	10	9	13	0.26	-0.18
4%	8%	69%	62%	13%	67%	18%	31%	63%	19%	77%	82%	91%

Age of Dam: 3 | Dam Weight: 965 | dMPPA: 101

## 44

### Beckton Accent G637 A4

04-11-2019 | BKT : G637 | A (100%) | #4170726

BECKTON ACCENT W180 C2

BECKTON CODY K1 P014  
BECKTON CHRISTY R046 CQ

#### BECKTON ACCENT B740 W3

BECKTON LANA Y033 W

BECKTON WARRIOR W534 N4  
BECKTON LANA W370 E

BECKTON LEGEND B653 C2

BECKTON ACCENT U777 C2  
BECKTON CHRISTY W779 C

#### BECKTON SUSAN D040 A

BECKTON SUSAN B246 N

BECKTON NEW ERA Y194  
BECKTON SUSAN R022 CQ

#### Individual Data

act. BW	59
SC	38.0
Frame	M-

**HerdBuilder 189 / Top 14% | GridMaster 47 / Top 66%**

CED	BW	WW	ADG	DMI	YW	MLK	ME	HPG	CEM	STY	MRB	REA
21	-6.3	59	0.19	1.23	89	28	-3	11	8	17	0.34	0.00
1%	1%	53%	69%	35%	62%	20%	26%	39%	38%	35%	61%	58%

Age of Dam: 3 | Dam Weight: 860 | dMPPA: 104

When heifers have to calve without a lot of TLC, better look for elite calving ease, such as Lot 44. He ranks in the best 1% of all Red Angus for both easy calving and low birth weight.

## 42

### Beckton Likable G404 W4

03-26-2019 | BKT : G404 | A (100%) | #4170134

BECKTON LIKABLE U130 L2

BECKTON LIKABLE S633  
BECKTON KIT S478 LN

#### BECKTON LIKABLE C229 R3

BECKTON TAMARA X447 J

BECKTON ROMAN J S158  
BECKTON TAMARA R834 JC

BECKTON WARHAWK N560

BECKTON WARRIOR T1 H281  
BECKTON FIREFLY H195 HD

#### BECKTON LARKABA R011 WA

BECKTON LARKABA N394 HR

BECKTON HERALD FJ J776  
BECKTON LARKABA F136 LN

#### Individual Data

act. BW	76
SC	34.0
Frame	M+

**HerdBuilder 177 / Top 29% | GridMaster 45 / Top 92%**

CED	BW	WW	ADG	DMI	YW	MLK	ME	HPG	CEM	STY	MRB	REA
18	-4.7	42	0.15	0.76	67	22	0	15	8	16	0.26	-0.26
2%	7%	96%	89%	10%	94%	77%	45%	5%	24%	42%	82%	97%

Age of Dam: 14 | Dam Weight: 1060 | dMPPA: 99

Lowering annual cow depreciation costs and reducing replacement rates so that a larger percentage of the heifer calves can be cash-cropped is a great strategy for sustained profit and requires like Lot 42 - who come from dams that are built to last.



## 45

### BSF Accent G714 A4

04-21-2019 | BKB : G714 | B (99.90%) | #4165170

BECKTON ACCENT U777 C2

BECKTON CODY K1 P014  
BECKTON SUSAN R022 CQ

#### BECKTON LEGEND B653 C2

BECKTON CHRISTY W779 C

BKT CLIFFTOP TP R288  
BECKTON CHRISTY S151 NB

BECKTON ACCENT Y260 L3

BECKTON ACCENT W180 C2  
BECKTON LANA W463 L

#### BSF JULIA C614 A

BSF JULIA Z264 L

BECKTON LOKI X507 L4  
BSF JULIA X752 L

#### Individual Data

act. BW	61
SC	36.5
Frame	M

**HerdBuilder 181 / Top 23% | GridMaster 47 / Top 69%**

CED	BW	WW	ADG	DMI	YW	MLK	ME	HPG	CEM	STY	MRB	REA
18	-4.8	50	0.2	1.10	82	28	-2	11	5	17	0.38	-0.18
3%	6%	83%	62%	25%	76%	15%	30%	52%	84%	25%	51%	91%

Age of Dam: 4 | Dam Weight: 990 | dMPPA: 99





Lot 46



Lot 47

## 46 HALFMAN ORACLE RO G557

02-19-2019 | CFH : G557 | A (100%) | #4127560

BROWN REVELATION P7021 BFCK CHEROKEE CNYN 4912  
BROWN MS VICILA M7799

### BROWN ORACLE B112

BROWN MS P707 Y6648 BECKTON NEBULA P P707  
BROWN MS JULIAN W6579

BECKTON CLIFFTOP W692 E3 BKT CLIFFTOP TP R288  
BECKTON LYDIA S274 EP

### BECKTON ROSE A417 C

BECKTON ROSE W063 H BECKTON HERITAGE T270 J2  
BECKTON ROSE T297 JR

Individual Data	
act. BW	69
SC	36.0
Frame	M

**HerdBuilder 180 / Top 25% | GridMaster 51 / Top 8%**

CED	BW	WW	ADG	DMI	YW	MLK	ME	HPG	CEM	STY	MRB	REA
17	-4.6	64	0.24	1.07	103	22	-2	5	8	16	0.57	0.16
6%	8%	31%	28%	24%	29%	76%	29%	98%	20%	50%	15%	23%

Age of Dam: 6 | Dam Weight: 1145 | dMPPA: 94

19 Outstanding Oracle sons are in this sale and they can't all be Lot 1. G557 puts 11 traits in the top 1/3 of the breed including a 17 CED to 103 YW spread.

## 47 HALFMAN ORACLE SU G505

02-11-2019 | GKH : G505 | A (100%) | #4127352

BROWN REVELATION P7021 BFCK CHEROKEE CNYN 4912  
BROWN MS VICILA M7799

### BROWN ORACLE B112

BROWN MS P707 Y6648 BECKTON NEBULA P P707  
BROWN MS JULIAN W6579

BECKTON EPIC K3 M606 BECKTON EPIC KJ J722  
BECKTON LANAF268 CT

### BKT SUFFEINA T500 EP

BECKTON SUFFEINA N844 LN BECKTON LANCER T1 H080  
BKT SUFFEINA H693 LN

Individual Data	
act. BW	82
SC	38.0
Frame	M

**HerdBuilder 177 / Top 29% | GridMaster 50 / Top 12%**

CED	BW	WW	ADG	DMI	YW	MLK	ME	HPG	CEM	STY	MRB	REA
16	-3.6	58	0.24	1.00	96	22	1	2	8	17	0.51	0.16
9%	17%	57%	34%	20%	46%	75%	50%	98%	22%	37%	24%	23%

Age of Dam: 12 | Dam Weight: 975 | dMPPA: 98

If you like to buy bulls out of cows that have made it through a few droughts and hard winters, consider G505. This Oracle son's 12 year old dam has stood the test of time and still gets bred AI.

## 48 HALFMAN ORACLE LK G524

02-12-2019 | CFH : G524 | A (100%) | #4127524

BROWN REVELATION P7021 BFCK CHEROKEE CNYN 4912  
BROWN MS VICILA M7799

### BROWN ORACLE B112

BROWN MS P707 Y6648 BECKTON NEBULA P P707  
BROWN MS JULIAN W6579

BECKTON LEGEND S670 BECKTON LANCER F442 T  
BECKTON KIT F468 JL

### BECKTON LARKABA U153 LE

BECKTON LARKABA S299 EP BECKTON EPIC K4 N795  
BECKTON LARKABA D170 JV

Individual Data	
act. BW	80
SC	35.0
Frame	M

**HerdBuilder 181 / Top 23% | GridMaster 51 / Top 9%**

CED	BW	WW	ADG	DMI	YW	MLK	ME	HPG	CEM	STY	MRB	REA
16	-2.7	64	0.22	0.96	99	20	0	6	8	16	0.54	0.24
12%	31%	31%	47%	18%	38%	87%	41%	97%	35%	42%	19%	13%

Age of Dam: 11 | Dam Weight: 1100 | dMPPA: 96

## 49 HALFMAN ORACLE AK G535

02-13-2019 | GKH : G535 | A (100%) | #4127380

BROWN REVELATION P7021 BFCK CHEROKEE CNYN 4912  
BROWN MS VICILA M7799

### BROWN ORACLE B112

BROWN MS P707 Y6648 BECKTON NEBULA P P707  
BROWN MS JULIAN W6579

HALFMAN NEBULA MT Z725 BECKTON NEBULA P P707  
HALFMAN MATTIE T336

### HALFMAN ANKATA NB C314

HALFMAN ANKATA U393 BECKTN HALFMANHUSTLER F  
HALFMAN ANKATA L607

Individual Data	
act. BW	69
SC	36.0
Frame	M

**HerdBuilder 203 / Top 5% | GridMaster 51 / Top 6%**

CED	BW	WW	ADG	DMI	YW	MLK	ME	HPG	CEM	STY	MRB	REA
15	-3.5	66	0.29	1.58	113	20	10	8	8	19	0.50	0.32
17%	19%	24%	5%	70%	12%	88%	99%	94%	29%	11%	26%	6%

Age of Dam: 4 | Dam Weight: 1280 | dMPPA: 98

G535 represents a lot of Horse Power starting with just a 69 lb birth weight. If you have a big group of cows to breed, consider turning out a complete sire group - like the four Oracle sons on this page. That will result in a calf crop that converts feed similarly and finishes closer to the harvest date.

# RANCHERS' GUIDE TO EPDS

- HB** – HerdBuilder is a maternally focused selection index that predicts the probability of developing profitable cowherd traits while maximizing the value of marketed progeny. Expressed as dollars per cow exposure, HB is calculated based on the scenario that bulls are mated to heifers and cows, replacement heifers are retained, and all remaining progeny are marketed on a quality-based carcass grid. (Index/High Value)
- GM** – GridMaster is a terminally focused selection index that predicts the probability to increase the value of marketed calves. GM places selection pressure on growth, feedyard performance and carcass quality, predicting differences in profit as expressed per cow exposure. GM is calculated based on the scenario that bulls are mated to cows only, and all progeny are marketed on a quality-based carcass grid. (Index/High Value)
- CED** – Calving Ease Direct predicts differences in the percent of calves born unassisted out of 2-year-old dams. (Percent/High Value)
- BW** – Birth Weight predicts differences in actual birth weight of progeny. (Pounds/Low Value)
- WW** – Weaning Weight predicts differences in 205-day weaning weight. (Pounds/High Value)
- YW** – Yearling Weight predicts differences in 365-day yearling weight. (Pounds/High Value)
- ADG** – Average Daily Gain predicts differences in weight gain between 205 and 365 days of age. (Pounds/High Value)
- DMI** – Dry Matter Intake predicts differences in daily feed intake as measured in a feedlot during the post-weaning period. (Pounds/Low Value)
- MILK** – Milk predicts differences in weaning weight attributed to the milking ability of the animal's daughters. (Pounds/High Value)
- HPG** – Heifer Pregnancy predicts differences in the percent of daughters who are able to conceive and calve at 2 years of age following exposure to breeding. (Percent/High Value)
- CEM** – Calving Ease Maternal predicts differences in the percent of daughters who are able to calve unassisted as 2-year-old heifers. (Percent/High Value)
- STAY** – Stayability predicts differences in the ability of an animals' retained daughters to remain productive in the herd – calve every year – through 6 years of age. (Percent/High Value)
- MARB** – Marbling predicts differences in marbling score – amount of intramuscular fat measured at the 13th rib. (Marbling Score Units/High Value)
- YG** – Yield Grade predicts differences in USDA Yield Grade, which is calculated using CW, REA and Fat. (Yield Grade Units/Low Value)
- CW** – Carcass Weight predicts differences in actual hot carcass weight. (Pounds/High Value)
- REA** – Ribeye Area predicts differences in square inches of ribeye area measured at the 13th rib. (Square Inches/High Value)
- FAT** – Fat predicts differences in the depth of backfat measured between the 12th and 13th ribs. (Inches/Low Value)

Ranch Tested. Rancher Trusted.

## Red Angus

For more information, visit [RedAngus.org](http://RedAngus.org).





# RED ANGUS BULLS



**50**

## HALFMANN NEBULA CH G487

02-10-2019 | CTH: G487 | A (100%) | #4127656

BECKTON NEBULA M045

BECKTON NEPTUNE R2 K065  
BECKTON BELGA K285 JL

### BECKTON NEBULA P P707

BECKTON LANA M809 EP

BECKTON EPIC K1 K863  
BECKTON LANA K253 DM

BUF CRK THE RIGHT KIND U199

BUF CRK LANCER R017  
BUF CRK SHOSHONE R353

### HALFMANN CHIEF RK C258

HALFMANN CHIEF DV Z707

HALFMANN DIVIDEND U398  
HALFMANN CHIEF S506

Individual Data

act BW	85
SC	34.0
Frame	M

**HerdBuilder 180 / Top 24% | GridMaster 49 / Top 32%**

CED	BW	WW	ADG	DMI	YW	MLK	ME	HPG	CEM	STY	MRB	REA
12	-2.5	54	0.21	1.05	88	27	1	11	6	18	0.58	-0.24
54%	35%	72%	52%	23%	64%	28%	49%	56%	73%	22%	14%	96%

Age of Dam: 4 | Dam Weight: 1255 | dMPPA: 101

*Lots 50 & 51 are direct sons of P707 - one of the most influential and most proven sires in Red Angus history.*

# MIX 30

THE HIGH ENERGY LIQUID FEED.

"We feed it year around and see an increase in conception rates, calf survivability and cow condition. We feed it and believe in it 365 days a year."

- Glen, Cody and Chad Halfmann  
Halfmann Red Angus

## MIX 30

THE HIGH ENERGY LIQUID FEED.

800-575-7585

WWW.MIX30.COM

## 51 HALFMANNN NEBULA MA G518

02-12-2019 | GKH : G518 | A (100%) | #4127362

BECKTON NEBULA M045 BECKTON NEPTUNE R2 K065  
BECKTON BELGA K285 JL

### BECKTON NEBULA P P707

BECKTON LANA M809 EP BECKTON EPIC K1 K863  
BECKTON LANA K253 DM

HALFMANN NEBULA AL Y593 BECKTON NEBULA P P707  
HALFMANN ALEXIS U352

### HALFMANN MATTIE NB A816

HALFMANN MATTIE CH Y660 HALFMANN CHATEAU U335  
HALFMANN MATTIE U334

Individual Data	
act. BW	70
SC	42.0
Frame	M

**HerdBuilder 197 / Top 8% | GridMaster 49 / Top 31%**

CED	BW	WW	ADG	DMI	YW	MLK	ME	HPG	CEM	STY	MRB	REA
16	-5.7	52	0.24	1.27	90	29	0	10	8	19	0.66	-0.33
8%	3%	79%	31%	39%	60%	13%	48%	74%	32%	13%	7%	99%

Age of Dam: 6 | Dam Weight: 1270 | dMPPA: 102

*This linebred P707 earns his top 8% HerdBuilder by combining calving ease with stayability, gain and carcass quality.*

## 53 HALFMANNN SYNERGY CO G571

03-02-2019 | CFH : G571 | A (100%) | #4127574

BECKTON NEBULA P P707 BECKTON NEBULA M045  
BECKTON LANA M809 EP

### BROWN SYNERGY X7838

CBAR BROWN ABIGRACE T714 LJC MISSION STATEMENT P27  
BROWN MS ABIGRACE L7730

BECKTON NEBULA N R573 BECKTON NEBULA M045  
BECKTON LANA M621 LN

### BECKTON COCA T080 NB

BECKTON COCA R375 WR BECKTON WARRIOR CL M686  
BECKTON COCA K480 CO

Individual Data	
act. BW	47
SC	39.0
Frame	M+

**HerdBuilder 212 / Top 2% | GridMaster 48 / Top 50%**

CED	BW	WW	ADG	DMI	YW	MLK	ME	HPG	CEM	STY	MRB	REA
23	-9.9	45	0.21	1.13	77	28	-6	10	14	18	0.66	-0.35
1%	1%	93%	58%	28%	84%	18%	13%	68%	1%	20%	7%	99%

Age of Dam: 12 | Dam Weight: 966 | dMPPA: 94

*Lots 52-54 - Half-Brothers by Synergy: These Synergy sons defy the antagonisms with single digit ranks for both direct and maternal calving ease - which means a higher percentage of calves weaned. All three of them come from highly fertile proven dams that have passed their 6 year stayability threshold - no wonder these half brothers excel for STAY.*

## 55 WCRA Julian G153

04-25-2019 | WCRA : G153 | A (100%) | #4149824

BECKTON JULIAN X465 J5 BECKTON JULIAN G5 S107  
BECKTON SUFFEINA P643 J

### BECKTON JULIAN A434 N6

BECKTON LAKME T689 NX BECKTON NEXUS L016  
BECKTON LAKME M669 EP

BECKTON JULIAN A434 N6 BECKTON JULIAN X465 J5  
BECKTON LAKME T689 NX

### WCRA PINE MARIE D111 J

CARPENTER PINE MARIE BOO3 N BECKTON NEBULA P P707  
BKT PINE MARIE Z513 W

Individual Data	
act. BW	76
SC	36.5
Frame	M

**HerdBuilder 165 / Top 51% | GridMaster 50 / Top 20%**

CED	BW	WW	ADG	DMI	YW	MLK	ME	HPG	CEM	STY	MRB	REA
11	-1.4	67	0.23	0.98	103	20	-2	14	4	15	0.48	-0.22
73%	57%	21%	42%	19%	29%	89%	31%	9%	95%	60%	29%	95%

Age of Dam: 3 | Dam Weight: | dMPPA: 99

## 52 HALFMANNN SYNERGY CH G593

03-16-2019 | CFH : G593 | A (100%) | #4127600

BECKTON NEBULA P P707 BECKTON NEBULA M045  
BECKTON LANA M809 EP

### BROWN SYNERGY X7838

CBAR BROWN ABIGRACE T714 LJC MISSION STATEMENT P27  
BROWN MS ABIGRACE L7730

BECKTON NEBULA P P707 BECKTON NEBULA M045  
BECKTON LANA M809 EP

### BECKTON CHRISTY A234 N

BECKTON CHRISTY X526 L BECKTON LOKI CL S284  
BECKTON CHRISTY R046 CQ

Individual Data	
act. BW	73
SC	36.0
Frame	M

**HerdBuilder 203 / Top 4% | GridMaster 49 / Top 30%**

CED	BW	WW	ADG	DMI	YW	MLK	ME	HPG	CEM	STY	MRB	REA
17	-5.4	57	0.24	1.42	95	32	-1	10	10	18	0.63	-0.30
5%	4%	63%	32%	54%	49%	3%	35%	71%	5%	14%	9%	98%

Age of Dam: 6 | Dam Weight: 1355 | dMPPA: 103

## 54 HALFMANNN SYNERGY LK G595

03-18-2019 | CFH : G595 | A (100%) | #4127602

BECKTON NEBULA P P707 BECKTON NEBULA M045  
BECKTON LANA M809 EP

### BROWN SYNERGY X7838

CBAR BROWN ABIGRACE T714 LJC MISSION STATEMENT P27  
BROWN MS ABIGRACE L7730

BECKTON JULIAN U699 L5 BECKTON JULIAN G1 J526  
BECKTON ROSE L311 LN

### BECKTON LARKABA Z951 J

BECKTON LARKABA U062 CB BECKTON COBALT S029  
BECKTON LARKABA S374 NB

Individual Data	
act. BW	70
SC	37.0
Frame	M

**HerdBuilder 195 / Top 9% | GridMaster 48 / Top 44%**

CED	BW	WW	ADG	DMI	YW	MLK	ME	HPG	CEM	STY	MRB	REA
19	-7.3	49	0.19	1.00	80	29	-8	10	11	17	0.63	-0.33
1%	1%	86%	67%	20%	80%	11%	7%	60%	1%	34%	9%	99%

Age of Dam: 7 | Dam Weight: 1195 | dMPPA: 97



**EASLEY TRAILER MFG.**

...built tough for the long haul  
Div. of Wilson Trailer Mfg., Inc.

(325) 823-4333  
(325) 823-4115 FAX

RAY WILSON

BOBBY WILSON

MICHAEL WILSON

BOX 388

Anson, TX 79501



# RED ANGUS BULLS



Lot 56

56

**BSF G488**

03-30-2019 | BSF : G488 | A (100%) | #4171538

BECKTON NEBULA M045

BECKTON NEPTUNE R2 K065  
BECKTON BELGA K285 JL

**BECKTON NEBULA E P084**

BKT PINE MARIE M119 EP

BECKTON EPIC K F075  
BKT PINE MARIE D126 JL

BECKTON WARRIOR Y108 E5

BECKTON WARRIOR W534 N4  
BECKTON SUSAN W058 E

**BECKTON LANA C819 W**

BECKTON LANA U789 NB

BECKTON NEBULA M045  
BECKTON LANA P073 EP

Individual Data	
act BW	65
SC	35.5
Frame	M

**HerdBuilder 167 / Top 52% | GridMaster 46 / Top 55%**

CED	BW	WW	ADG	DMI	YW	MLK	ME	HPG	CEM	STY	MRB	REA
20	-7.3	48	0.22	0.89	83	30	0	13	10	14	0.2548	-0.22
1%	1%	83%	34%	15%	65%	13%	42%	19%	7%	83%	74%	90%

Age of Dam: 11 | Dam Weight: 1175 | dMPPA:

*Sells without registration papers.*

57

**Beckton Likable G850 A5**

06-04-2019 | BKT : G850 | A (100%) | #4171036

BECKTON LIKABLE Y124 L3

BECKTON LIKABLE U130 L2  
BKT PINE MARIE S802 LO

**BECKTON LIKABLE E391 N4**

BECKTON LANA X466 N

BECKTON NEBULA T398 V3  
BECKTON LANA T226 NB

BECKTON ACCENT B553 L2

BECKTON ACCENT U777 C2  
BECKTON LANA X839 L

**BECKTON COCA E365 A**

BECKTON COCAA213 E

BECKTON EPIC Y484 N6  
BECKTON COCA Y660 E

Individual Data	
act. BW	82
SC	35.0
Frame	M

**HerdBuilder 190 / Top 13% | GridMaster 51 / Top 8%**

CED	BW	WW	ADG	DMI	YW	MLK	ME	HPG	CEM	STY	MRB	REA
14	-1.6	67	0.28	0.98	111	26	2	11	6	17	0.40	0.00
28%	53%	23%	11%	19%	15%	36%	62%	45%	67%	31%	46%	58%

Age of Dam: 2 | Dam Weight: 745 | dMPPA: 100

*Lot 57 & 58 - Half-Brothers by Likable: Almost halfway through the offering we find two of the best balanced bulls in the entire offering. These brothers average best 25% calving ease and 110 YW EPD and top 10% rank for Gain (ADG), which is supported by their top 8% ranking for GridMaster index.*

59

**BSF G076**

03-8-2019 | BSF : G076 | 100% | #

Red Angus Sire

Red Angus Dam

Individual Data	
act. BW	50
SC	35.0
Frame	M-

*Sells without registration papers.*

58

**Beckton Likable G842 D5**

05-30-2019 | BKT : G842 | A (100%) | #4171092

BECKTON LIKABLE Y124 L3

BECKTON LIKABLE U130 L2  
BKT PINE MARIE S802 LO

**BECKTON LIKABLE E391 N4**

BECKTON LANA X466 N

BECKTON NEBULA T398 V3  
BECKTON LANA T226 NB

BECKTON DOMINOR C052 E8

BECKTON DOMINOR A378 W7  
BECKTON SCARLETT A406 E

**BECKTON PINE MARIE E185 D**

BECKTON PINE MARIE C652 J

BECKTON JANUS X799 L2  
BKT PINE MARIE X339 N

Individual Data	
act BW	82
SC	34.5
Frame	M

**HerdBuilder 192 / Top 11% | GridMaster 51 / Top 6%**

CED	BW	WW	ADG	DMI	YW	MLK	ME	HPG	CEM	STY	MRB	REA
14	-1.2	64	0.28	0.81	109	31	2	11	7	17	0.38	-0.02
23%	61%	30%	9%	12%	17%	5%	63%	39%	58%	32%	51%	63%

Age of Dam: 2 | Dam Weight: 725 | dMPPA: 105

60

**Beckton Likable G379 N4**

03-24-2019 | BKT : G379 | A (100%) | #4170506

BECKTON LIKABLE U130 L2

BECKTON LIKABLE S633  
BECKTON KIT S478 LN

**BECKTON LIKABLE C229 R3**

BECKTON TAMARA X447 J

BECKTON ROMAN J S158  
BECKTON TAMARA R834 JC

BECKTON NEBULA W778 J4

BECKTON NEBULA PJ S543  
BECKTON LANAS197 JT

**BECKTON PINE MARIE B572 N**

BKT PINE MARIE X249 N

BECKTON NEBULA T269 E2  
BKT PINE MARIE M119 EP

Individual Data	
act BW	65
SC	34.0
Frame	M

**HerdBuilder 181 / Top 23% | GridMaster 44 / Top 96%**

CED	BW	WW	ADG	DMI	YW	MLK	ME	HPG	CEM	STY	MRB	REA
18	-5.6	42	0.09	0.56	56	20	-2	11	8	18	0.38	-0.28
3%	3%	96%	99%	5%	98%	87%	29%	56%	24%	20%	51%	98%

Age of Dam: 5 | Dam Weight: 1125 | dMPPA: 92

## 61 HALFMAN BOURNE CO G499

02-11-2019 | CFH : G499 | A (100%) | #4127500

5L ADVANTAGE 3267-221Y

BUF CRK THE RIGHT KIND U199  
5LADINA 195-3267

### 5L BOURNE 117-48A

5L ROXIE 854-117

5L SIGNATURE 5615  
XXX ROXIE 854 MR

BECKTON NEBULA M045

BECKTON NEPTUNE R2 K065  
BECKTON BELGA K285 JL

### BECKTON COCA T168 NB

BECKTON COCA H256 JL

BKT JULIAN 7526 G  
BECKTON COCA D283 JV

Individual Data	
act. BW	70
SC	39.0
Frame	M

**HerdBuilder 197 / Top 8% | GridMaster 48 / Top 52%**

CED	BW	WW	ADG	DMI	YW	MLK	ME	HPG	CEM	STY	MRB	REA
16	-5.5	61	0.2	1.07	93	21	-4	18	6	17	0.40	-0.18
8%	3%	45%	60%	24%	52%	80%	21%	1%	74%	26%	46%	91%

Age of Dam: 12 | Dam Weight: 1340 | dMPPA: 98

*This Bourne son is loaded with cow herd building traits - capped off with a 1% rank for heifer pregnancy rate. And it's no surprise - his dam is a proven source of fertility and longevity.*

## 63 HALFMAN TOPGUN AK G470

02-09-2019 | GKH : G470 | A (100%) | #4127332

5L ADVANTAGE 3267-221Y

BUF CRK THE RIGHT KIND U199  
5LADINA 195-3267

### 5L TOPGUN 560-65B

5L BLACK ADINA 525-560

TC STOCKMAN 365  
5LADINA 293-525

BECKTON NEW ERA Y194

BECKTON NEBULA P P707  
BKT LARKEISA T310 JC

### HALFMAN ANKATA NE B005

HALFMAN ANKATA PK Z718

MESSMER PACKER S008  
HALFMAN ANKATA U393

Individual Data	
act. BW	92
SC	40.0
Frame	M+

**HerdBuilder 180 / Top 25% | GridMaster 50 / Top 14%**

CED	BW	WW	ADG	DMI	YW	MLK	ME	HPG	CEM	STY	MRB	REA
15	-2.8	75	0.29	1.80	121	23	5	13	8	15	0.36	0.26
18%	29%	6%	6%	86%	5%	69%	82%	13%	38%	58%	57%	11%

Age of Dam: 5 | Dam Weight: 1290 | dMPPA: 109



*Lots 63 & 65 - Top Gun Sons: Here's three Top Gun sons that are out of important, heavy producing cows in our program with an average MPPA of 107. All three come with excellent spread from calving ease to yearling weight.*

## 62 HALFMAN BOURNE LA G448

02-06-2019 | GKH : G448 | A (100%) | #4127308

5L ADVANTAGE 3267-221Y

BUF CRK THE RIGHT KIND U199  
5LADINA 195-3267

### 5L BOURNE 117-48A

5L ROXIE 854-117

5L SIGNATURE 5615  
XXX ROXIE 854 MR

BECKTON CLIFFTOP W692 E3

BKT CLIFFTOP TP R288  
BECKTON LYDIA S274 EP

### HALFMAN LANA CL A898

BECKTON LANA U574 JL

BECKTON JULIAN G3 P608  
BECKTON LANA R241 JC

Individual Data	
act. BW	72
SC	38.0
Frame	M+

**HerdBuilder 168 / Top 44% | GridMaster 50 / Top 18%**

CED	BW	WW	ADG	DMI	YW	MLK	ME	HPG	CEM	STY	MRB	REA
16	-5.3	64	0.23	1.30	100	24	-9	13	6	14	0.56	0.04
7%	4%	33%	42%	41%	36%	56%	4%	19%	65%	76%	16%	48%

Age of Dam: 6 | Dam Weight: 1250 | dMPPA: 102

## 64 HALFMAN TOPGUN SI G471

02-09-2019 | CFH : G471 | A (100%) | #4127476

5L ADVANTAGE 3267-221Y

BUF CRK THE RIGHT KIND U199  
5LADINA 195-3267

### 5L TOPGUN 560-65B

5L BLACK ADINA 525-560

TC STOCKMAN 365  
5LADINA 293-525

BECKTON HALFMANHUSTLR R588  
BECKTON HUSTLER CN J102  
BECKTON VERNICE F513 CL

### HALFMAN SIERRA HU C234

HALFMAN SIERRA SY A900

BROWN SYNERGY X7838  
HALFMAN SIERRA CH X563

Individual Data	
act. BW	78
SC	39.0
Frame	M+

**HerdBuilder 174 / Top 34% | GridMaster 50 / Top 18%**

CED	BW	WW	ADG	DMI	YW	MLK	ME	HPG	CEM	STY	MRB	REA
16	-4.1	61	0.25	1.42	101	21	3	13	9	14	0.46	0.14
7%	12%	46%	24%	54%	34%	80%	70%	15%	15%	70%	33%	27%

Age of Dam: 4 | Dam Weight: 1315 | dMPPA: 103

## 65 HALFMAN TOPGUN CH G486

02-10-2019 | CTH : G486 | A (100%) | #4127654

5L ADVANTAGE 3267-221Y

BUF CRK THE RIGHT KIND U199  
5LADINA 195-3267

### 5L TOPGUN 560-65B

5L BLACK ADINA 525-560

TC STOCKMAN 365  
5LADINA 293-525

BECKTON NEW ERA Y194

BECKTON NEBULA P P707  
BKT LARKEISA T310 JC

### HALFMAN CHIEF NE C257

HALFMAN CHIEF WR Y591

BECKTON WARRIOR N645 T1  
HALFMAN CHIEF W413

Individual Data	
act. BW	82
SC	40.0
Frame	M+

**HerdBuilder 167 / Top 46% | GridMaster 49 / Top 29%**

CED	BW	WW	ADG	DMI	YW	MLK	ME	HPG	CEM	STY	MRB	REA
16	-3.6	61	0.22	1.32	97	21	-1	12	7	14	0.53	-0.01
10%	17%	42%	43%	44%	42%	83%	36%	21%	44%	71%	21%	62%

Age of Dam: 4 | Dam Weight: 1320 | dMPPA: 108



# RED ANGUS BULLS



Lot 66

67

## Beckton Accent G822 L4

05-22-2019 | BSF : G822 | A (100%) | #4171510

BECKTON ACCENT W180 C2

BECKTON CODY K1 P014  
BECKTON CHRISTY R046 CQ

### BECKTON ACCENT B740 W3

BECKTON LANA Y033 W

BECKTON WARRIOR W534 N4  
BECKTON LANA W370 E

BECKTON LIKABLE Y124 L3

BECKTON LIKABLE U130 L2  
BKT PINE MARIE S802 LO

### BECKTON BELGA C706 L

BECKTON BELGA Y060 E

BECKTON EMCEE W526 J2  
BECKTON BELGA W389 D

Individual Data	
act. BW	71
SC	35.0
Frame	M

**HerdBuilder 194 / Top 10% | GridMaster 49 / Top 32%**

CED	BW	WW	ADG	DMI	YW	MLK	ME	HPG	CEM	STY	MRB	REA
22	-6.5	59	0.21	0.94	92	29	0	10	10	16	0.40	0.10
1%	1%	55%	53%	17%	54%	14%	47%	70%	4%	44%	46%	35%

Age of Dam: 4 | Dam Weight: 1115 | dMPPA: 104

69

## Beckton Accent G477 J5

03-29-2019 | BKT : G477 | A (100%) | #4171142

BECKTON ACCENT W180 C2

BECKTON CODY K1 P014  
BECKTON CHRISTY R046 CQ

### BECKTON ACCENT B740 W3

BECKTON LANA Y033 W

BECKTON WARRIOR W534 N4  
BECKTON LANA W370 E

BECKTON JULIAN C226 E7

BECKTON JULIAN A479 L6  
BECKTON MINERVA A365 E

### BECKTON MINOLA E656 J

BECKTON MINOLA C409 H

BECKTON HERITAGE A767 C3  
BECKTON MINOLA A590 H

Individual Data	
act. BW	53
SC	34.5
Frame	M

**HerdBuilder 167 / Top 46% | GridMaster 50 / Top 17%**

CED	BW	WW	ADG	DMI	YW	MLK	ME	HPG	CEM	STY	MRB	REA
17	-4.3	61	0.23	1.13	98	29	1	10	8	14	0.50	0.18
5%	10%	43%	38%	28%	40%	13%	49%	67%	32%	73%	26%	21%

Age of Dam: 2 | Dam Weight: 815 | dMPPA: 106

G477 predicts to improve feed conversion with well above average rank for ADG and well below average rank for DMI. This calving ease specialist documents a profitable growth curve with ratios of 93 Birth, 116 weaning and 109 yearling.

66

## HALFMANN TAKEOVER AL G583

03-07-2019 | CFH : G583 | A (100%) | #4127588

LSF TAKEOVER 9943W

HXC CONQUEST 4405P  
LSF WIDELOAD R5014 U8061

### HALFMANN TAKEOVER SM C214

HALFMANN SANDMN NB Z708  
BECKTON NEBULA P707  
HALFMANN SANDMAN M601

LJC MISSION STATEMENT P27

LJC LANCER 806  
LJC HANNAH 106

### HALFMANN ALEXIS U352

HALFMANN ALEXIS L621

OLC CHATEAU L416  
HALFMANN MISS ALEXIS

Individual Data	
act. BW	
SC	37.0
Frame	M+

**HerdBuilder 160 / Top 58% | GridMaster 49 / Top 25%**

CED	BW	WW	ADG	DMI	YW	MLK	ME	HPG	CEM	STY	MRB	REA
15	-3.5	56	0.26	1.36	97	26	2	9	7	14	0.49	0.00
15%	19%	64%	20%	47%	43%	35%	59%	81%	43%	70%	28%	58%

Age of Dam: 11 | Dam Weight: 1145 | dMPPA: 101

If you like herd bulls out of dams that stand the test of time, take a good look at G583. His dam is ideal - with a mature weight of under 1150 lbs and still maintaining an above average MPPA as an 11 year old.

68

## Beckton Accent G248 W3

03-18-2019 | BSF : G248 | A (100%) | #4171676

BECKTON ACCENT U777 C2

BECKTON CODY K1 P014  
BECKTON SUSAN R022 CQ

### BECKTON ACCENT B553 L2

BECKTON LANA X839 L

BECKTON LEGEND S670  
BECKTON LANA S371 DM

BECKTON WARRIOR Y108 E5

BECKTON WARRIOR W534 N4  
BECKTON SUSAN W058 E

### BECKTON COCA D237 W

BECKTON COCA Y579 H

BECKTON HASTEN U108 J3  
BECKTON COCA T080 NB

Individual Data	
act. BW	60
SC	33.5
Frame	M-

**HerdBuilder 163 / Top 54% | GridMaster 45 / Top 84%**

CED	BW	WW	ADG	DMI	YW	MLK	ME	HPG	CEM	STY	MRB	REA
19	-6.0	35	0.17	0.71	63	22	-6	12	8	14	0.36	-0.31
1%	2%	99%	79%	9%	96%	74%	11%	26%	35%	66%	57%	98%

Age of Dam: 3 | Dam Weight: 965 | dMPPA: 90

70

## BSF Legend G297 N5

03-20-2019 | BSF : G297 | B (99.80%) | #4171804

BECKTON LEGEND Z689 J3

BECKTON LEGEND X561 J2  
BECKTON LARKABA W868 J

### BECKTON LEGEND E464 L4

BECKTON UCOLA X143 L

BECKTON LIKABLE U120 L2  
BECKTON UCOLA U709 LO

BECKTON NEBULA Z111 N5

BECKTON NEBULA X096 N4  
BECKTON MINOLA X670 N

### BSF NEBULANN E818 N

B195

BECKTON LEGEND S670

BSF NEBULANN Y217 N

Individual Data	
act. BW	70
SC	33.5
Frame	M-

**HerdBuilder 177 / Top 29% | GridMaster 48 / Top 37%**

CED	BW	WW	ADG	DMI	YW	MLK	ME	HPG	CEM	STY	MRB	REA
15	-1.5	55	0.2	0.81	86	24	0	11	7	16	0.44	-0.14
13%	54%	70%	63%	12%	68%	58%	46%	50%	51%	42%	37%	87%

Age of Dam: 2 | Dam Weight: 725 | dMPPA: 97

## 71

### Beckton Epic G633 A7

04-11-2019 | BKT : G633 | A (100%) | #4170852

BECKTON EPIC X464 L5

BECKTON EPIC K6 S569  
BECKTON LANA M393 LN

#### BECKTON EPIC B310 J6

BECKTON MINERVA Y116 J

BECKTON JULIAN W743 H5  
BECKTON MINERVA W081 N

BECKTON ACCENT U777 C2

BECKTON CODY K1 P014  
BECKTON SUSAN R022 CQ

#### BECKTON FIREFLY D489 A

BECKTON FIREFLY W021 H

BECKTON HERITAGE T270 J2  
BECKTON FIREFLY T028 JR

Individual Data

act. BW 64

SC 34.0

Frame M-

**HerdBuilder 153 / Top 70% | GridMaster 44 / Top 96%**

CED	BW	WW	ADG	DMI	YW	MLK	ME	HPG	CEM	STY	MRB	REA
15	-3.6	55	0.13	1.24	77	28	0	12	7	15	0.30	-0.28
13%	17%	68%	95%	36%	85%	15%	40%	25%	56%	61%	72%	98%

Age of Dam: 3 | Dam Weight: 965 | dMPPA:

## 73

### HALFMANN ORACLE LA G521

02-12-2019 | GKH : G521 | A (100%) | #4127364

BROWN REVELATION P7021

BFCK CHEROKEE CNYN 4912  
BROWN MS VICILA M7799

#### BROWN ORACLE B112

BROWN MS P707 Y6648

BECKTON NEBULA P P707  
BROWN MS JULIAN W6579

BROWN SYNERGY X7838

BECKTON NEBULA P P707  
C-BAR & BROWN ABIGRAACE T7

#### HALFMANN LANA SY C248

HALFMANN LANA CL A898

BECKTON CLIFFTOP W692 E3  
BECKTON LANA U574 JL

Individual Data

act. BW 94

SC 39.0

Frame M+

**HerdBuilder 197 / Top 7% | GridMaster 53 / Top 1%**

CED	BW	WW	ADG	DMI	YW	MLK	ME	HPG	CEM	STY	MRB	REA
13	-1.6	78	0.33	1.83	130	24	2	6	8	18	0.64	0.25
35%	53%	3%	1%	88%	2%	55%	57%	97%	35%	22%	8%	12%

Age of Dam: 4 | Dam Weight: 1130 | dMPPA: 103

*Lot 73 - 75 - Half-Brothers by Oracle: Over halfway through the offering and we find a set of Oracle x P707 bred Power Bulls. Turn these three age advantage bulls out with a big group of cows and you might need an extra truck to haul the calves to market. This trio of top performers average 108 YW ratio and 109 IMF ratio. Even better, they average Top 9% HerdBuilder, Top 3% GridMaster, Top 8% YW and Top 9% Marbling.*

## 75

### HALFMANN ORACLE CH G496

02-11-2019 | CFH : G496 | A (100%) | #4127496

BROWN REVELATION P7021

BFCK CHEROKEE CNYN 4912  
BROWN MS VICILA M7799

#### BROWN ORACLE B112

BROWN MS P707 Y6648

BECKTON NEBULA P P707  
BROWN MS JULIAN W6579

BECKTON NEBULA P P707

BECKTON NEBULA M045  
BECKTON LANA M809 EP

#### HALFMANN CHIEF NB C253

HALFMANN CHIEF MS Y616

HALFMANN MSN STATEMENT  
HALFMANN CHIEF S506

Individual Data

act. BW 88

SC 38.0

Frame M

**HerdBuilder 195 / Top 9% | GridMaster 52 / Top 4%**

CED	BW	WW	ADG	DMI	YW	MLK	ME	HPG	CEM	STY	MRB	REA
13	-2.3	70	0.26	1.46	112	25	4	8	6	18	0.73	0.22
43%	39%	13%	17%	57%	13%	44%	80%	94%	65%	15%	3%	15%

Age of Dam: 4 | Dam Weight: 1180 | dMPPA: 104

## 72

### Beckton Scamp G346 A6

03-23-2019 | BSF : G346 | 2 (100%) | #4171246

BECKTON LIKABLE U130 L2

BECKTON LIKABLE S633  
BECKTON KIT S478 LN

#### BECKTON LIKABLE C229 R3

BECKTON TAMARA X447 J

BECKTON ROMAN J S158  
BECKTON TAMARA R834 JC

BECKTON DOMINOR Z1 R610

BECKTON DOMINOR ZC M919  
BECKTON SIERRAK557 LO

#### BECKTON CHRISTY X648 D

BECKTON CHRISTY J743 JL

BECKTON JULIAN GG B571  
BECKTON CHRISTY A111 VQ

Individual Data

act. BW 68

SC 31.5

Frame M-

**HerdBuilder 201 / Top 5% | GridMaster 49 / Top 29%**

CED	BW	WW	ADG	DMI	YW	MLK	ME	HPG	CEM	STY	MRB	REA
15	-2.5	59	0.22	0.76	94	25	-2	13	6	19	0.34	0.04
17%	35%	52%	48%	10%	50%	48%	31%	13%	73%	13%	61%	48%

Age of Dam: 9 | Dam Weight: 1025 | dMPPA: 101

## 74

### HALFMANN ORACLE FL G437

02-02-2019 | GKH : G437 | A (100%) | #4208370

BROWN REVELATION P7021

BFCK CHEROKEE CNYN 4912  
BROWN MS VICILA M7799

#### BROWN ORACLE B112

BROWN MS P707 Y6648

BECKTON NEBULA P P707  
BROWN MS JULIAN W6579

BECKTON NEW ERA Y194

BECKTON NEBULA P P707  
BKT LARKEISA T310 JC

#### HALFMANN FLOWER NE B062

HALFMANN DESTINY T351

5L DESTINATION 893-6215  
BROWN MS VACATION P6837

Individual Data

act. BW 54

SC 37.0

Frame M

**HerdBuilder 193 / Top 11% | GridMaster 52 / Top 4%**

CED	BW	WW	ADG	DMI	YW	MLK	ME	HPG	CEM	STY	MRB	REA
14	-2.7	71	0.28	1.66	116	21	8	7	7	18	0.61	0.41
22%	31%	11%	9%	76%	9%	80%	96%	95%	58%	20%	11%	3%

Age of Dam: 5 | Dam Weight: ET | dMPPA: 91





# RED ANGUS BULLS

76

## HALFMANN BOURNE LA G473

02-09-2019 | CFH: G473 | A (100%) | #4127480

5L ADVANTAGE 3267-221Y

BUF CRK THE RIGHT KIND U199  
5L ADINA 195-3267

### 5L BOURNE 117-48A

5L ROXIE 854-117

5L SIGNATURE 5615  
XXX ROXIE 854 MR

MUSHRUSH LUNESTAA007

MUSHRUSH LUNESTAMD Y097  
MUSHRUSH CANDICE JL X212

### BECKTON LANA C240 L

BECKTON LANAA651L

BECKTON LANCER T371 H4  
BECKTON LANA T556 CQ

Individual Data	
act. BW	79
SC	36.0
Frame	M

**HerdBuilder 160 / Top 59% | GridMaster 48 / Top 38%**

CED	BW	WW	ADG	DMI	YW	MLK	ME	HPG	CEM	STY	MRB	REA
15	-3.9	64	0.19	1.23	94	25	-6	13	5	14	0.59	-0.07
21%	14%	31%	71%	35%	50%	46%	14%	16%	86%	72%	13%	74%

Age of Dam: 4 | Dam Weight: 1085 | dMPPA: 99

We love the shape and thickness that comes as standard equipment on the Bourne sons. G473 was one of the higher IMF bulls in the entire offering with a 110 IMF ratio.

77

## HALFMANN BOURNE CH G517

02-12-2019 | CTH: G517 | A (100%) | #4127662

5L ADVANTAGE 3267-221Y

BUF CRK THE RIGHT KIND U199  
5L ADINA 195-3267

### 5L BOURNE 117-48A

5L ROXIE 854-117

5L SIGNATURE 5615  
XXX ROXIE 854 MR

BROWN SYNERGY X7838

BECKTON NEBULA P P707  
CBAR BROWN ABIGRACE T714

### HALFMANN CHIEF SY A800

HALFMANN CHIEF W424

OLC CHATEAU L416  
HLFMN B958-B251

Individual Data	
act. BW	80
SC	40.0
Frame	M+

**HerdBuilder 180 / Top 25% | GridMaster 48 / Top 48%**

CED	BW	WW	ADG	DMI	YW	MLK	ME	HPG	CEM	STY	MRB	REA
14	-4.1	68	0.21	1.56	101	29	-1	13	7	16	0.45	-0.03
22%	12%	19%	55%	68%	33%	11%	36%	16%	47%	40%	35%	65%

Age of Dam: 6 | Dam Weight: 1265 | dMPPA: 110

This big loined Bourne son earned ratios of 114 WW, 103 YW and 111 REA. His dam may be our highest producing Synergy daughter, passing her 6-year Stayability threshold with an impressive 110 MPPA.



John Stipes

Outside Sales Representative

214-435-6051

john.stipes@animalhealthinternational.com

animalhealthinternational.com

Animal Health  
INTERNATIONAL



## 78

### HALFMANN ACCENT RO G515

02-12-2019 | GKH : G515 | A (100%) | #4127360

BECKTON ACCENT Y312 N3

BECKTON ACCENT U777 C2  
BKT LARKEISA S055 NB

#### BECKTON ACCENT C216 D4

BECKTON BELGA R716 DM

BECKTON DOMINOR ZC M919  
BECKTON BELGA K285 JL

BECKTON ACCENT Y260 L3

BECKTON ACCENT W180 C2  
BECKTON LANA W463 L

#### HALFMANN ROSE AC E785

HALFMANN ROSE SY B061

BROWN SYNERGY X7838  
BECKTON ROSE R114 LN

Individual Data	
act. BW	65
SC	36.0
Frame	

**HerdBuilder 186 / Top 17% | GridMaster 48 / Top 52%**

CED	BW	WW	ADG	DMI	YW	MLK	ME	HPG	CEM	STY	MRB	REA
17	-5.5	49	0.19	0.86	80	26	-5	11	8	17	0.61	-0.37
3%	3%	86%	69%	14%	81%	36%	17%	45%	32%	32%	11%	99%
Age of Dam: 2		Dam Weight: 952		dMPPA: 100								

## 80

### Beckton Accent G600 C3

04-07-2019 | BKT : G600 | A (100%) | #4170316

BECKTON CODY K1 P014

BECKTON CODY KH M390  
BECKTON ROSE M126 WR

#### BECKTON ACCENT W180 C2

BECKTON CHRISTY R046 CQ

BECKTON CHEROKEE N N479  
BECKTON CHRISTY N740 HR

BECKTON CLIFFTOP W692 E3

BKT CLIFFTOP TP R288  
BECKTON LYDIA S274 EP

#### BECKTON KIT Z554 C

BECKTON KIT S271 JL

BECKTON JULIAN G1 J526  
BECKTON KIT L399 HR

Individual Data	
act. BW	51
SC	34.5
Frame	M

**HerdBuilder 193 / Top 11% | GridMaster 43 / Top 99%**

CED	BW	WW	ADG	DMI	YW	MLK	ME	HPG	CEM	STY	MRB	REA
22	-8.2	40	0.1	0.95	56	27	-5	9	10	19	0.33	-0.24
1%	1%	97%	99%	18%	98%	25%	16%	83%	6%	11%	64%	96%
Age of Dam: 7		Dam Weight: 1070		dMPPA: 100								

Here's a sleep all night calving ease son of Accent W180 that also predicts profit through reducing your feed bill. Note his best 18% rank for low dry matter intake (DMI) and best 16% rank for mature cow maintenance energy requirement.

## 82

### BSF Hughes G558 H4

04-03-2019 | BSF : G558 | B (99.90%) | #4171852

BECKTON HUGHES C463 N2

BIEBER H HUGHES W109  
BECKTON LAKME T689 NX

#### BECKTON HUGHES E261 S3

BECKTON LANA C073 S

BECKTON SCAMP A627 J4  
BECKTON LANA A083 A

BECKTON HUGHES C463 N2

BIEBER H HUGHES W109  
BECKTON LAKME T689 NX

#### BSF HUSTELLE E045 H

BSF HUSTELLE C233 J

BECKTON JULIAN A565 J4  
BSF HUSTELLE A756 E

Individual Data	
act. BW	69
SC	33.0
Frame	M-

**HerdBuilder 170 / Top 40% | GridMaster 47 / Top 69%**

CED	BW	WW	ADG	DMI	YW	MLK	ME	HPG	CEM	STY	MRB	REA
13	-3.7	66	0.18	1.22	95	27	-4	13	6	16	0.36	-0.08
38%	16%	23%	78%	34%	49%	23%	19%	21%	67%	44%	57%	77%
Age of Dam: 2		Dam Weight: 800		dMPPA: 107								

Lot 82 is one of several bulls that are out of first calf heifers. G558's dam is off to a great start in our program, weaning her first calf at a 117 WW ratio.

## 79

### HALFMANN ACCENT MI G424

01-22-2019 | CTH : G424 | A (100%) | #4127638

BECKTON ACCENT U777 C2

BECKTON CODY K1 P014  
BECKTON SUSAN R022 CQ

#### BECKTON ACCENT Y312 N3

BKT LARKEISA S055 NB

BECKTON NEBULA P P707  
BECKTON LARKEISA P688 C

BECKTON EPIC R522 K

BECKTON EPIC K F075  
BKT SUFFEINAA828 DM

#### HALFMANN MAIATA EP E813

HALFMANN MAIATA NB B047

BECKTON NEBULA P P707  
BECKTON MAIATA U489 HT

Individual Data	
act. BW	70
SC	39.0
Frame	

**HerdBuilder 159 / Top 60% | GridMaster 46 / Top 74%**

CED	BW	WW	ADG	DMI	YW	MLK	ME	HPG	CEM	STY	MRB	REA
16	-3.8	59	0.18	1.25	88	25	-7	16	7	13	0.54	-0.35
11%	15%	53%	74%	37%	64%	40%	10%	2%	47%	78%	19%	99%
Age of Dam: 2		Dam Weight: 880		dMPPA: 105								

## 81

### BSF Dominor G770 N10

04-05-2019 | BSF : G770 | B (99.90%) | #4171774

BECKTON DOMINOR C052 E8

BECKTON DOMINOR A378 W7  
BECKTON SCARLETT A406 E

#### BECKTON DOMINOR E693 D9

BECKTON CHRISTY C149 D

BECKTON DOMINOR A378 W7  
BECKTON CHRISTY A234 N

BECKTON NEW ERA Y194

BECKTON NEBULA P P707  
BKT LARKEISA T310 JC

#### BSF LOKETTA E324 N

BSF LOKETTAA119 N

BECKTON NEBULA Y002 C5  
BSF LOKETTA Y361 A

Individual Data	
act. BW	66
SC	32.0
Frame	M-

**HerdBuilder 187 / Top 16% | GridMaster 49 / Top 25%**

CED	BW	WW	ADG	DMI	YW	MLK	ME	HPG	CEM	STY	MRB	REA
17	-3.9	55	0.23	0.94	92	28	-2	10	7	17	0.47	-0.07
3%	14%	70%	38%	17%	57%	20%	28%	60%	40%	37%	31%	74%
Age of Dam: 2		Dam Weight: 790		dMPPA:								

## 83

### Beckton Epic G817 N7

05-17-2019 | BKT : G817 | A (100%) | #4170504

BECKTON EPIC X464 L5

BECKTON EPIC K6 S569  
BECKTON LANA M393 LN

#### BECKTON EPIC B310 J6

BECKTON MINERVA Y116 J

BECKTON JULIAN W743 H5  
BECKTON MINERVA W081 N

BECKTON NEBULA P P707

BECKTON NEBULA M045  
BECKTON LANA M809 EP

#### BECKTON LANA B357 N

BECKTON LANA X234 E

BECKTON EPIC K6 S569  
BECKTON LANA R334 LN

Individual Data	
act. BW	79
SC	34.0
Frame	M-

**HerdBuilder 184 / Top 19% | GridMaster 48 / Top 45%**

CED	BW	WW	ADG	DMI	YW	MLK	ME	HPG	CEM	STY	MRB	REA
15	-3.0	62	0.22	1.25	97	27	-2	11	8	17	0.43	-0.22
16%	26%	41%	45%	37%	43%	27%	30%	47%	38%	31%	41%	95%
Age of Dam: 5		Dam Weight: 1020		dMPPA: 94								



# RED ANGUS BULLS

84

## Beckton Epic G205 N7

03-15-2019 | BKT : G205 | A (100%) | #4170324

BECKTON EPIC X464 L5

BECKTON EPIC K6 S569  
BECKTON LANA M393 LN

### BECKTON EPIC B310 J6

BECKTON MINERVA Y116 J

BECKTON JULIAN W743 H5  
BECKTON MINERVA W081 N

BECKTON NEBULA T269 E2

BECKTON NEBULA M045  
BECKTON RUTH M967 EP

### BECKTON CHRISTY Z279 N

BECKTON CHRISTY T749 HT

BECKTON HERITAGE N013  
BECKTON CHRISTY N542 JC

Individual Data

act. BW	75
SC	34.0
Frame	M

HerdBuilder 159 / Top 60% | GridMaster 43 / Top 99%

CED	BW	WW	ADG	DMI	YW	MLK	ME	HPG	CEM	STY	MRB	REA
13	-3.5	48	0.08	0.87	61	27	-1	12	6	17	0.30	-0.32
35%	19%	88%	99%	14%	97%	24%	37%	30%	69%	31%	72%	99%

Age of Dam: 7 | Dam Weight: 1280 | dMPPA: 96

86

## HALFMANN TENX RN G402

01-16-2019 | CFH : G402 | A (100%) | #4127434

REDHILL TEN X 104U 190A

AA R TEN X 7008 SA  
RED HILL B571 BARMAID 104U

### RHF-RHR 190A TENX 49D

REDHILL 151Y AMBER 134B

REDHILL U199 LANCER 151Y  
RHF-CCCH 4X AMBER 46Z

BECKTON CLIFFTOP W692 E3

BKT CLIFFTOP TP R288  
BECKTON LYDIA S274 EP

### HALFMANN ROBIN CT E814

HALFMANN ROBIN SY B056

BROWN SYNERGY X7838  
HALFMANN ROBIN WR Y595

Individual Data

act. BW	69
SC	37.0
Frame	M+

HerdBuilder 143 / Top 81% | GridMaster 48 / Top 40%

CED	BW	WW	ADG	DMI	YW	MLK	ME	HPG	CEM	STY	MRB	REA
13	-3.2	56	0.23	1.29	94	29	0	8	8	13	0.46	-0.15
35%	23%	64%	36%	41%	51%	13%	45%	90%	25%	82%	33%	88%

Age of Dam: 2 | Dam Weight: 958 | dMPPA: 102

87

## HALFMANN ORACLE SC G525

02-12-2019 | CFH : G525 | A (100%) | #4127526

BROWN REVELATION P7021

BFCK CHEROKEE CNYN 4912  
BROWN MS VICILA M7799

### BROWN ORACLE B112

BROWN MS P707 Y6648

BECKTON NEBULA P P707  
BROWN MS JULIAN W6579

BECKTON HERITAGE X403 L3

BECKTON HERITAGE T270 J2  
BECKTON INDIGO H150 LN

### BECKTON SCARLETT G325 H

BECKTON SCARLETT R808 NB

BECKTON NEBULA M045  
ANDRAS SCARLETT 2029

Individual Data

act. BW	83
SC	39.0
Frame	M+

HerdBuilder 187 / Top 16% | GridMaster 51 / Top 7%

CED	BW	WW	ADG	DMI	YW	MLK	ME	HPG	CEM	STY	MRB	REA
14	-2.8	74	0.26	1.41	116	24	-3	8	6	17	0.51	0.28
31%	29%	6%	17%	52%	9%	54%	26%	90%	71%	31%	24%	9%

Age of Dam: 4 | Dam Weight: 1120 | dMPPA: 109

Better study this catalog till the very end. Here we are almost 3/4 of the way through the bulls and we find performance ratios of 118 WW, 115 YW, 108 ADG and 110 REA. Out of a powerhouse 109 MPPA dam.

85

## HALFMANN TENX RB G423

01-22-2019 | GKH : G423 | A (100%) | #4127288

REDHILL TEN X 104U 190A

AA R TEN X 7008 SA  
RED HILL B571 BARMAID 104U

### RHF-RHR 190A TENX 49D

REDHILL 151Y AMBER 134B

REDHILL U199 LANCER 151Y  
RHF-CCCH 4X AMBER 46Z

BECKTON ACCENT W180 C2

BECKTON CODY K1 P014  
BECKTON CHRISTY R046 CQ

### HALFMANN REBALAS AC E774

HALFMANN REBALAS NC B008

LSF NIGHT CALVER 9921W  
HALFMANN REBALAS IM Z687

Individual Data

act. BW	68
SC	39.0
Frame	M+

HerdBuilder 184 / Top 19% | GridMaster 50 / Top 13%

CED	BW	WW	ADG	DMI	YW	MLK	ME	HPG	CEM	STY	MRB	REA
15	-3.7	67	0.25	1.43	106	28	1	13	8	16	0.59	0.11
19%	16%	23%	26%	54%	23%	15%	51%	16%	32%	48%	13%	33%

Age of Dam: 2 | Dam Weight: 904 | dMPPA: 105

These TenX 49D sons are going to represent out-cross pedigrees on most of the sire lines that have come from this sale in the past several sales. Lot 85's dam is a rising star in our program earning a 105 MPPA after her first calf.



88

## HALFMANN ORACLE SI G447

02-06-2019 | CFH : G447 | A (100%) | #4127462

BROWN REVELATION P7021

BFCK CHEROKEE CNYN 4912  
BROWN MS VICILA M7799

### BROWN ORACLE B112

BROWN MS P707 Y6648

BECKTON NEBULA P P707  
BROWN MS JULIAN W6579

BROWN SYNERGY X7838

BECKTON NEBULA P P707  
C-BAR & BROWN ABIGRACE T7

### HALFMANN SIERRA SY A857

HALFMANN SIERRA NB X467

BECKTON NEBULA P P707  
HALFMANN SIERRA U330

Individual Data

act. BW	94
SC	36.0
Frame	M+

HerdBuilder 194 / Top 10% | GridMaster 51 / Top 6%

CED	BW	WW	ADG	DMI	YW	MLK	ME	HPG	CEM	STY	MRB	REA
14	-2.2	69	0.26	1.39	111	22	4	7	8	18	0.57	0.21
32%	41%	16%	18%	50%	15%	74%	75%	96%	33%	19%	15%	16%

Age of Dam: 6 | Dam Weight: 1490 | dMPPA: 96

## 89 HALFMAN TOPGUN IN G457

02-07-2019 | GKH : G457 | A (100%) | #4127320

5L ADVANTAGE 3267-221Y

BUF CRK THE RIGHT KIND U199  
5LADINA 195-3267

### 5L TOPGUN 560-65B

5L BLACK ADINA 525-560

TC STOCKMAN 365  
5LADINA 293-525

BECKTON JULIAN W743 H5

BECKTON JULIAN G5 S107  
BECKTON KIT L399 HR

### HALFMANN INDIGO JL A869

BECKTON INDIGO R567 WA

BECKTON WARHAWK N560  
BECKTON INDIGO N754 HR

Individual Data

act. BW 64

SC 40.0

Frame M

HerdBuilder 165 / Top 50% | GridMaster 49 / Top 28%

CED	BW	WW	ADG	DMI	YW	MLK	ME	HPG	CEM	STY	MRB	REA
21	-7.4	46	0.21	0.83	79	17	-6	16	9	12	0.57	-0.09
1%	1%	91%	56%	13%	81%	97%	12%	2%	15%	89%	15%	78%

Age of Dam: 6 | Dam Weight: | dMPPA: 95

## 91 HALFMAN TOPGUN AK G497

02-11-2019 | GKH : G497 | A (100%) | #4127348

5L ADVANTAGE 3267-221Y

BUF CRK THE RIGHT KIND U199  
5LADINA 195-3267

### 5L TOPGUN 560-65B

5L BLACK ADINA 525-560

TC STOCKMAN 365  
5LADINA 293-525

BECKTON NEBULA P P707

BECKTON NEBULA M045  
BECKTON LANA M809 EP

### HALFMANN ANKATA NB C263

HALFMANN ANKATA PK Z727

MESSMER PACKER S008  
HALFMANN ANKATA L607

Individual Data

act. BW 73

SC 35.0

Frame M

HerdBuilder 183 / Top 21% | GridMaster 50 / Top 18%

CED	BW	WW	ADG	DMI	YW	MLK	ME	HPG	CEM	STY	MRB	REA
17	-5.2	56	0.25	1.32	96	21	-6	14	9	15	0.55	0.13
5%	4%	64%	26%	44%	46%	84%	11%	9%	11%	65%	18%	29%

Age of Dam: 4 | Dam Weight: 1215 | dMPPA: 103

## 93 Beckton Scamp G853 N5

06-06-2019 | BSF : G853 | A (100%) | #4171310

BECKTON SCAMP X494 E3

BECKTON SCAMP T A825  
BECKTON LANA S074 EP

### BECKTON SCAMP A627 J4

BECKTON SERENA R023 JC

BECKTON JUSTICE CC N265  
BECKTON SERENA N469 JC

BECKTON NEBULA T398 V3

BECKTON NEBULA L P093  
BECKTON MINERVA J615 VG

### BECKTON LARKABA Y156 N

BECKTON LARKABA U274 JL

BECKTON JULIAN G3 P608  
BECKTON LARKABA N708 HR

Individual Data

act. BW 89

SC 35.5

Frame M

HerdBuilder 189 / Top 14% | GridMaster 47 / Top 60%

CED	BW	WW	ADG	DMI	YW	MLK	ME	HPG	CEM	STY	MRB	REA
19	-5.7	52	0.2	0.77	84	30	-10	14	9	16	0.29	-0.26
1%	3%	78%	64%	11%	74%	8%	4%	11%	13%	47%	74%	97%

Age of Dam: 8 | Dam Weight: 1280 | dMPPA: 104

## 90 HALFMAN TOPGUN SM G403

01-17-2019 | GKH : G403 | A (100%) | #4127268

5L ADVANTAGE 3267-221Y

BUF CRK THE RIGHT KIND U199  
5LADINA 195-3267

### 5L TOPGUN 560-65B

5L BLACK ADINA 525-560

TC STOCKMAN 365  
5LADINA 293-525

SANDMAN RCN SANDHILL CHF 416

PANHANDLE POLLY 4119

### HALFMANN SANDMAN SM E727

HALFMANN SANDMAN DY Y620

LELAND DESTINY 6215-9019W  
HALFMANN SANDMAN U306

Individual Data

act. BW 69

SC 39.0

Frame M

HerdBuilder 156 / Top 66% | GridMaster 48 / Top 39%

CED	BW	WW	ADG	DMI	YW	MLK	ME	HPG	CEM	STY	MRB	REA
16	-3.8	46	0.2	0.90	79	15	-2	13	9	13	0.47	0.00
9%	15%	91%	59%	15%	81%	99%	29%	16%	19%	84%	31%	58%

Age of Dam: 2 | Dam Weight: 1305 | dMPPA: 92

## 92 HALFMAN DEFENDER SU G409

01-19-2019 | CFH : G409 | A (100%) | #4127440

5L ADVOCATE 817-14W

5L SIGNATURE 5615  
5L MARTA 345-817

### 5L DEFENDER 560-30Z

5L BLACK ADINA 525-560

TC STOCKMAN 365  
5LADINA 293-525

BECKTON EPIC B835 C8

BECKTON EPIC Z061 D7  
BECKTON KIT Z554 C

### HALFMANN SUSAN EP E900

BECKTON SUSAN B793 E

BECKTON EPIC X816 C6  
BECKTON SUSAN X470 E

Individual Data

act. BW 59

SC 37.0

Frame M+

HerdBuilder 121 / Top 95% | GridMaster 49 / Top 21%

CED	BW	WW	ADG	DMI	YW	MLK	ME	HPG	CEM	STY	MRB	REA
17	-5.7	54	0.22	1.46	89	24	-4	8	5	9	0.68	0.10
5%	3%	72%	46%	58%	61%	50%	19%	94%	86%	97%	5%	35%

Age of Dam: 2 | Dam Weight: 1040 | dMPPA: 100



Don't Compromise Herd Health  
— Inject MULTIMIN® 90

MULTIMIN® 90 is an injectable supplement that quickly boosts essential trace mineral levels with no antagonist interference in calves, heifers, cows, and bulls.



Jill Ginn (West TX & NM)  
(806) 570-6185 • jill@multiminusa.com

R<sub>X</sub> REQUIRED

www.multiminusa.com • 866.269.6467 • 970.372.2302

Copyright © 2020, Multimin USA. All Rights Reserved.



# RED ANGUS BULLS



Lot 94

94

## BSF Accent G366 A5

03-24-2019 | BSF : G366 | B (99.90%) | #4171764

BECKTON ACCENT B740 W3 | BECKTON ACCENT W180 C2  
BECKTON LANA Y033 W

### BECKTON ACCENT E492 N4

BKT PINE MARIE Z177 N | BECKTON NEBULA X096 N4  
BKT PINE MARIE X540 H

BECKTON ACCENT A485 C3 | BECKTON ACCENT U777 C2  
BECKTON TAMARA R175 CQ

### BSF CODETTE E713 A

BSF CODETTE A012 N | BECKTON NEBULA W486 D3  
BSF CODETTE U860 CD

Individual Data

act BW	56
SC	39.5
Frame	S+

HerdBuilder 177 / Top 30% | GridMaster 43 / Top 98%

CED	BW	WW	ADG	DMI	YW	MLK	ME	HPG	CEM	STY	MRB	REA
19	-5.9	44	0.1	0.94	60	27	-3	12	9	17	0.36	-0.22
1%	2%	93%	99%	17%	97%	25%	24%	26%	17%	34%	57%	95%

Age of Dam: 2 | Dam Weight: 730 | dMPPA: 96

95

## WCRA Accent G144

03-24-2019 | WCRA : G144 | A (100%) | #4149826

BECKTON CODY K1 P014 | BECKTON CODY KH M390  
BECKTON ROSE M126 WR

### BECKTON ACCENT W180 C2

BECKTON CHRISTY R046 CQ | BECKTON CHEROKEE N N479  
BECKTON CHRISTY N740 HR

BECKTON NEW ERA Y194 | BECKTON NEBULA P P707  
BKT LARKEISAT310 JC

### BECKTON PINE MARIE E378 N

BECKTON PINE MARIE B359 S | BECKTON SCAMP X494 E3  
BKT PINE MARIE X204 J

Individual Data

act BW	55
SC	35.0
Frame	M-

HerdBuilder 232 / Top 1% | GridMaster 47 / Top 67%

CED	BW	WW	ADG	DMI	YW	MLK	ME	HPG	CEM	STY	MRB	REA
21	-6.7	51	0.2	0.96	82	25	-4	11	9	22	0.33	-0.18
1%	1%	81%	66%	18%	76%	48%	22%	51%	9%	1%	64%	91%

Age of Dam: 2 | Dam Weight: 788 | dMPPA: 93

96

## BSF Clifftop G549 A6

04-03-2019 | BSF : G549 | B (99.90%) | #4171522

BECKTON CLIFFTOP Y012 C4 | BECKTON CLIFFTOP W692 E3  
BECKTON LANA W240 C

### BECKTON CLIFFTOP C572 N5

BKT PINE MARIE U454 NB | BECKTON NEBULA P P707  
BKT PINE MARIE N582 WR

BECKTON ACCENT W180 C2 | BECKTON CODY K1 P014  
BECKTON CHRISTY R046 CQ

### BSF HELENA C180 A

BSF HELENA X529 N | BECKTON NEBULA T398 V3  
BSF HELENA T014 JD

Individual Data

act BW	80
SC	33.5
Frame	M-

HerdBuilder 197 / Top 7% | GridMaster 46 / Top 80%

CED	BW	WW	ADG	DMI	YW	MLK	ME	HPG	CEM	STY	MRB	REA
15	-3.2	46	0.17	0.84	73	22	-4	10	7	20	0.37	-0.29
18%	23%	92%	81%	13%	89%	70%	19%	65%	58%	5%	54%	98%

Age of Dam: 4 | Dam Weight: 1105 | dMPPA: 85



Lot 97

97

## Beckton Hughes G085 L4

03-05-2019 | BKT : G085 | A (100%) | #4171042

BECKTON HUGHES C463 N2 | BIEBER H HUGHES W109  
BECKTON LAKME T689 NX

### BECKTON HUGHES E261 S3

BECKTON LANA C073 S | BECKTON SCAMP A627 J4  
BECKTON LANA A083 A

BECKTON LIKABLE U130 L2 | BECKTON LIKABLE S633  
BECKTON KIT S478 LN

### BECKTON TAMARA E467 L

B188 | BECKTON NEBULA W486 D3  
BECKTON TAMARA S729 CT

Individual Data

act BW	52
SC	31.0
Frame	M-

HerdBuilder 190 / Top 13% | GridMaster 47 / Top 67%

CED	BW	WW	ADG	DMI	YW	MLK	ME	HPG	CEM	STY	MRB	REA
18	-5.4	51	0.16	0.85	77	22	-4	11	10	17	0.41	-0.02
2%	4%	81%	85%	14%	84%	70%	20%	43%	8%	30%	44%	63%

Age of Dam: 2 | Dam Weight: 695 | dMPPA: 95

*Still Need Heifer Bulls?*

## 98

### HALFMANN DEFENDER SI G459

02-07-2019 | CFH: G459 | A (100%) | #4127466

5L ADVOCATE 817-14W

5L SIGNATURE 5615  
5L MARTA 345-817

#### 5L DEFENDER 560-30Z

5L BLACK ADINA 525-560

TC STOCKMAN 365  
5L ADINA 293-525

HALFMANN GENESIS A831

BECKTON NEW ERA Y194  
BECKTON EOLA U247 JL

#### HALFMANN SIERRA GN D471

HALFMANN SIERRA IM B010

MUSHRUSH IMPRESSIVE CA  
HALFMANN SIERRA MS Z743

Individual Data	
act. BW	76
SC	39.0
Frame	M

**HerdBuilder 136 / Top 87% | GridMaster 48 / Top 48%**

CED	BW	WW	ADG	DMI	YW	MLK	ME	HPG	CEM	STY	MRB	REA
17	-4.9	54	0.21	1.46	88	24	-3	9	5	12	0.49	-0.06
4%	6%	71%	55%	58%	65%	55%	27%	79%	83%	89%	28%	72%
Age of Dam: 3		Dam Weight: 1185		dMPPA: 101								

## 100

### HALFMANN ACCENT SI G401

01-16-2019 | CFH: G401 | A (100%) | #4127432

BECKTON ACCENT U777 C2

BECKTON CODY K1 P014  
BECKTON SUSAN R022 CQ

#### BECKTON ACCENT Y312 N3

BKT LARKEISA S055 NB

BECKTON NEBULA P P707  
BECKTON LARKEISA P688 C

BUF CRK THE RIGHT KIND U199

BUF CRK LANCER R017  
BUF CRK SHOSHONE R353

#### HALFMANN SIERRA RK E722

HALFMANN SIERRA NB X467

BECKTON NEBULA P P707  
HALFMANN SIERRA U330

Individual Data	
act. BW	62
SC	38.0
Frame	M+

**HerdBuilder 150 / Top 74% | GridMaster 47 / Top 62%**

CED	BW	WW	ADG	DMI	YW	MLK	ME	HPG	CEM	STY	MRB	REA
16	-5.3	56	0.21	1.38	91	25	-6	14	7	12	0.48	-0.21
8%	4%	63%	52%	49%	59%	46%	14%	10%	51%	85%	29%	94%
Age of Dam: 2		Dam Weight: 826		dMPPA: 100								

## 102

### HALFMANN ACCENT RO G585

03-08-2019 | CFH: G585 | A (100%) | #4127590

BECKTON ACCENT Y312 N3

BECKTON ACCENT U777 C2  
BKT LARKEISA S055 NB

#### BECKTON ACCENT C216 D4

BECKTON BELGA R716 DM

BECKTON DOMINOR ZC M919  
BECKTON BELGA K285 JL

BECKTON ACCENT Y260 L3

BECKTON ACCENT W180 C2  
BECKTON LANAW463 L

#### HALFMANN ROBIN AC E757

HALFMANN ROBIN SY A832

BROWN SYNERGY X7838  
HALFMANN ROBIN I551

Individual Data	
act. BW	62
SC	37.0
Frame	M

**HerdBuilder 189 / Top 14% | GridMaster 47 / Top 55%**

CED	BW	WW	ADG	DMI	YW	MLK	ME	HPG	CEM	STY	MRB	REA
17	-5.3	51	0.19	1.02	82	28	-1	11	8	18	0.65	-0.40
5%	4%	82%	66%	21%	77%	18%	37%	42%	33%	23%	7%	99%
Age of Dam: 2		Dam Weight: 1075		dMPPA: 97								

## 99

### HALFMANN DEFENDER CO G405

01-18-2019 | GKH: G405 | A (100%) | #4127272

5L ADVOCATE 817-14W

5L SIGNATURE 5615  
5L MARTA 345-817

#### 5L DEFENDER 560-30Z

5L BLACK ADINA 525-560

TC STOCKMAN 365  
5L ADINA 293-525

BECKTON JULIAN A086 C6

BECKTON JULIAN X465 J5  
BKT PINE MARIE W102 C

#### HALFMANN COCA JL E703

HALFMANN COCA NB C370

HALFMANN NEBULA MT Z725  
BECKTON COCA R675 NB

Individual Data	
act. BW	63
SC	39.0
Frame	M

**HerdBuilder 137 / Top 86% | GridMaster 49 / Top 31%**

CED	BW	WW	ADG	DMI	YW	MLK	ME	HPG	CEM	STY	MRB	REA
17	-5.9	52	0.21	1.38	86	23	-7	11	5	11	0.63	0.03
4%	2%	77%	56%	50%	70%	61%	9%	51%	86%	92%	9%	51%
Age of Dam: 2		Dam Weight: 876		dMPPA: 102								

## 101

### HALFMANN ACCENT SI G441

02-05-2019 | CFH: G441 | A (100%) | #4127456

BECKTON ACCENT Y312 N3

BECKTON ACCENT U777 C2  
BKT LARKEISA S055 NB

#### BECKTON ACCENT C216 D4

BECKTON BELGA R716 DM

BECKTON DOMINOR ZC M919  
BECKTON BELGA K285 JL

BECKTON ACCENT Y312 N3

BECKTON ACCENT U777 C2  
BKT LARKEISA S055 NB

#### HALFMANN SIERRA AC E743

HALFMANN SIERRA NB A830

HALFMANN NEBULA AQ Y597  
HALFMANN SIERRA NB Y623

Individual Data	
act. BW	58
SC	37.0
Frame	M

**HerdBuilder 150 / Top 73% | GridMaster 47 / Top 58%**

CED	BW	WW	ADG	DMI	YW	MLK	ME	HPG	CEM	STY	MRB	REA
17	-6.0	48	0.19	0.98	78	24	-5	13	7	13	0.61	-0.27
5%	2%	89%	69%	19%	83%	51%	16%	19%	47%	84%	11%	97%
Age of Dam: 2		Dam Weight: 908		dMPPA: 96								

## 103

### HALFMANN ACCENT SM G434

01-30-2019 | CTH: G434 | A (100%) | #4127640

BECKTON ACCENT U777 C2

BECKTON CODY K1 P014  
BECKTON SUSAN R022 CQ

#### BECKTON ACCENT Y312 N3

BKT LARKEISA S055 NB

BECKTON NEBULA P P707  
BECKTON LARKEISA P688 C

SANDMAN RCN SANDHILL CHF 416

PANHANDLE POLLY 4119

#### HALFMANN SANDMAN MR C256

BECKTON MARTA U079 NB

BECKTON NEBULA EN S347  
BECKTON MARTA S772 LO

Individual Data	
act. BW	58
SC	38.0
Frame	L-

**HerdBuilder 157 / Top 64% | GridMaster 46 / Top 76%**

CED	BW	WW	ADG	DMI	YW	MLK	ME	HPG	CEM	STY	MRB	REA
19	-6.6	53	0.2	1.29	85	28	2	14	8	13	0.50	-0.19
1%	1%	76%	63%	41%	72%	20%	57%	8%	22%	81%	26%	92%
Age of Dam: 4		Dam Weight: 1345		dMPPA: 99								

*...8 Bulls on these pages rank in the best 5% or better for Calving Ease!*



# RED ANGUS BULLS

## 104 HALFMAN SYNERGY IN G613

04-08-2019 | GKH : G613 | A (100%) | #4127418

BROWN SYNERGY X7838

BECKTON NEBULA P P707  
C-BAR & BROWN ABIGRACE T714

### HALFMAN SYNERGY EO B059

BECKTON EOLA U101 NB

BECKTON NEBULA EN S347  
BECKTON EOLA S011 NB

BECKTON CLIFFTOP W692 E3

BKT CLIFFTOP TP R288  
BECKTON LYDIA S274 EP

### HALFMAN INDIGO CT A864

BECKTON INDIGO U285 NB

BECKTON NEBULA PJ S543  
BECKTON INDIGO S095 VA

Individual Data

act. BW 78

SC 37.0

Frame M-

HerdBuilder 169 / Top 42% | GridMaster 48 / Top 43%

CED	BW	WW	ADG	DMI	YW	MLK	ME	HPG	CEM	STY	MRB	REA
19	-7.1	47	0.22	1.03	82	29	1	9	11	14	0.61	-0.37
1%	1%	90%	46%	22%	77%	12%	49%	88%	3%	67%	11%	99%

Age of Dam: 6 | Dam Weight: 1110 | dMPPA: 100

## 105 HALFMAN TAKEOVER RE G617

04-10-2019 | GKH : G617 | A (100%) | #4127422

LSF TAKEOVER 9943W

HXC CONQUEST 4405P  
LSF WIDELOAD R5014 U8061

### HALFMAN TAKEOVER SM C214

HALFMAN SANDMN NB Z708

BECKTON NEBULA P P707  
HALFMANN SANDMAN M601

HALFMAN SYNERGY MN A883

BROWN SYNERGY X7838  
HALFMANN MONAMS X468

### HALFMAN REALIN SY 318D

DAMAR Y157 REALIN A318

DAMAR PACKTIN 1819  
DAMAR REALIN Y157

Individual Data

act. BW 68

SC 34.0

Frame M

HerdBuilder 169 / Top 43% | GridMaster 47 / Top 66%

CED	BW	WW	ADG	DMI	YW	MLK	ME	HPG	CEM	STY	MRB	REA
18	-5.8	47	0.19	1.12	77	27	5	12	10	15	0.52	-0.16
3%	2%	89%	73%	27%	84%	25%	85%	36%	7%	58%	22%	89%

Age of Dam: 3 | Dam Weight: 1250 | dMPPA: 105

## 106 Beckton Accent G165 L5

03-12-2019 | BKT : G165 | A (100%) | #4171178

BECKTON ACCENT B740 W3

BECKTON ACCENT W180 C2  
BECKTON LANA Y033 W

### BECKTON ACCENT E492 N4

BKT PINE MARIE Z177 N

BECKTON NEBULA X096 N4  
BKT PINE MARIE X540 H

BECKTON LIKABLE Y124 L3

BECKTON LIKABLE U130 L2  
BKT PINE MARIE S802 LO

### BECKTON TAMARA E881 L

BECKTON TAMARAA428 N

BECKTON NEW ERA Y194  
BECKTON TAMARA L132 CT

Individual Data

act. BW 51

SC 39.0

Frame S+

HerdBuilder 182 / Top 22% | GridMaster 45 / Top 92%

CED	BW	WW	ADG	DMI	YW	MLK	ME	HPG	CEM	STY	MRB	REA
21	-6.6	45	0.14	0.97	68	25	0	10	10	17	0.38	-0.21
1%	1%	93%	92%	19%	93%	45%	47%	62%	5%	34%	51%	94%

Age of Dam: 2 | Dam Weight: 730 | dMPPA: 92

## 107 BSF Nebula G389 S4

03-25-2019 | BSF : G389 | B (99.90%) | #4171686

BECKTON NEBULA P P707

BECKTON NEBULA M045  
BECKTON LANA M809 EP

### BECKTON NEBULA B557 J3

BECKTON LARKABA T813 JC

BECKTON JUSTICE CH M056  
BECKTON LARKABA P645 JL

BECKTON SCAMP A627 J4

BECKTON SCAMP X494 E3  
BECKTON SERENA R023 JC

### BSF JULESTE D584 S

BSF JULESTE Z478 E

BECKTON EPIC U749 D5  
BSF JULESTE U662 CD

Individual Data

act. BW 65

SC 35.0

Frame M-

HerdBuilder 158 / Top 62% | GridMaster 46 / Top 73%

CED	BW	WW	ADG	DMI	YW	MLK	ME	HPG	CEM	STY	MRB	REA
17	-5.9	42	0.17	0.93	69	27	-5	11	8	14	0.49	-0.27
4%	2%	96%	83%	17%	93%	26%	16%	56%	32%	70%	28%	97%

Age of Dam: 3 | Dam Weight: 875 | dMPPA: 101

## 108 BSF Likable G465 L4

03-29-2019 | BSF : G465 | B (99.90%) | #4171632

BECKTON LIKABLE U130 L2

BECKTON LIKABLE S633  
BECKTON KIT S478 LN

### BECKTON LIKABLE G229 R3

BECKTON TAMARA X447 J

BECKTON ROMAN J S158  
BECKTON TAMARA R834 JC

BECKTON LOKI X833 H4

BECKTON LOKI CL S284  
BECKTON VERNICE T447 HT

### BSF LANETTE D532 L

BSF LANETTE U463 CQ

BECKTON CHEROKEE N N479  
BSF LANETTE R748 LN

Individual Data

act. BW 64

SC 39.0

Frame M+

HerdBuilder 167 / Top 46% | GridMaster 46 / Top 74%

CED	BW	WW	ADG	DMI	YW	MLK	ME	HPG	CEM	STY	MRB	REA
16	-3.6	57	0.17	1.12	85	26	0	10	7	16	0.33	0.01
10%	17%	62%	79%	27%	72%	30%	47%	74%	51%	45%	64%	55%

Age of Dam: 3 | Dam Weight: 930 | dMPPA: 101

## 109 Beckton Cardinal G397 A3

03-25-2019 | BKT : G397 | A (100%) | #4171098

BECKTON CARDINAL B074 N

TR DOUBLE EAGLE ZT220  
BKT PINE MARIE Z250 N

### BECKTON CARDINAL E381 J2

BECKTON LARKABA W868 J

BECKTON JULIAN G5 S107  
BECKTON LARKABA S663 JE

BECKTON ACCENT C418 L4

BECKTON ACCENT Y260 L3  
BECKTON KIT S545 LN

### BECKTON ROSE E618 A

BECKTON ROSE C310 J

BECKTON JULIAN G3 P608  
BECKTON ROSE Z907 A

Individual Data

act. BW 61

SC 32.5

Frame M

HerdBuilder 153 / Top 69% | GridMaster 49 / Top 27%

CED	BW	WW	ADG	DMI	YW	MLK	ME	HPG	CEM	STY	MRB	REA
10	-3.5	52	0.19	0.71	83	25	-4	12	0	16	0.51	-0.13
86%	19%	79%	66%	9%	75%	42%	22%	30%	99%	48%	24%	86%

Age of Dam: 2 | Dam Weight: 735 | dMPPA: 98

## 110 BSF Legend G843 E4

06-02-2019 | BSF : G843 | B (99.90%) | #4171858

BECKTON LEGEND C313 C2

BECKTON LEGEND S670  
BECKTON MINOLA W808 C

### BECKTON LEGEND E032 E3

BECKTON EMERA C066 E

BECKTON EPIC A286 E7  
BECKTON EMERA A029 D

BECKTON NEBULA C776 J3

BECKTON EPIC X464 L5  
BECKTON SIERRA Y058 J

### BSF CLIFFTANA E126 E

BSF CLIFFTANA C120 N

BECKTON NEBULA A773 L4  
BSF CLIFFTANA A563 L

Individual Data

act. BW	81
SC	34.0
Frame	M-

**HerdBuilder 203 / Top 5% | GridMaster 50 / Top 15%**

CED	BW	WW	ADG	DMI	YW	MLK	ME	HPG	CEM	STY	MRB	REA
18	-3.2	68	0.23	0.88	105	28	-2	12	9	17	0.33	0.16
2%	23%	20%	35%	15%	25%	15%	32%	29%	11%	32%	64%	23%

Age of Dam: 2 | Dam Weight: 850 | dMPPA: 104

110 lots into the sale we find this exceptional Legend son that spreads a best 2% Calving Ease to triple-digit growth. He also predicts to improve profitability regardless of your marketing strategy - sporting a Top 5% HerdBuilder and Top 15% GridMaster.

## 112 HALFMANN ORACLE KI G443

02-05-2019 | CFH : G443 | A (100%) | #4127458

BROWN REVELATION P7021

BFCK CHEROKEE CNYN 4912  
BROWN MS VICILA M7799

### BROWN ORACLE B112

BROWN MS P707 Y6648

BECKTON NEBULA P P707  
BROWN MS JULIAN W6579

BECKTON JULIAN G1 J526

BECKTON JULIAN GG B571  
BECKTON ANNIE F743 LN

### BECKTON KIT S271 JL

BECKTON KIT L399 HR

BECKTON HERALD F FA20  
BECKTON KIT F468 JL

Individual Data

act. BW	52
SC	37.0
Frame	M

**HerdBuilder 199 / Top 6% | GridMaster 50 / Top 15%**

CED	BW	WW	ADG	DMI	YW	MLK	ME	HPG	CEM	STY	MRB	REA
21	-7.9	59	0.2	0.99	91	23	4	9	10	17	0.55	0.46
1%	1%	55%	61%	20%	58%	64%	75%	83%	7%	34%	18%	2%

Age of Dam: 13 | Dam Weight: 1220 | dMPPA: 102

## 114 HALFMANN DEFENDER LA G536

02-13-2019 | CFH : G536 | A (100%) | #4127534

5L ADVOCATE 817-14W

5L SIGNATURE 5615  
5L MARTA 345-817

### 5L DEFENDER 560-30Z

5L BLACK ADINA 525-560

TC STOCKMAN 365  
5L ADINA 293-525

BECKTON ACCENT U777 C2

BECKTON CODY K1 P014  
BECKTON SUSAN R022 CQ

### BECKTON LANA Z605 A

BECKTON LANA W314 J

BECKTON JET L P491  
BECKTON LANA S866 CH

Individual Data

act. BW	74
SC	38.0
Frame	M+

**HerdBuilder 123 / Top 94% | GridMaster 47 / Top 57%**

CED	BW	WW	ADG	DMI	YW	MLK	ME	HPG	CEM	STY	MRB	REA
18	-5.5	50	0.19	1.53	80	21	-8	10	5	10	0.55	0.01
3%	3%	85%	69%	65%	80%	81%	8%	63%	82%	96%	18%	55%

Age of Dam: 7 | Dam Weight: 1285 | dMPPA: 98

## 111 HALFMANN ORACLE MI G450

02-06-2019 | GKH : G450 | A (100%) | #4127312

BROWN REVELATION P7021

BFCK CHEROKEE CNYN 4912  
BROWN MS VICILA M7799

### BROWN ORACLE B112

BROWN MS P707 Y6648

BECKTON NEBULA P P707  
BROWN MS JULIAN W6579

HALFMANN NEBULAAL Y593

BECKTON NEBULA P P707  
HALFMANN ALEXIS U352

### HALFMANN MINERVA NB A793

HALFMANN MINERVA MS Y606

HALFMANN MSN STATEMENT  
BIEBER MINERVA 8077

Individual Data

act. BW	72
SC	39.0
Frame	M+

**HerdBuilder 198 / Top 7% | GridMaster 51 / Top 10%**

CED	BW	WW	ADG	DMI	YW	MLK	ME	HPG	CEM	STY	MRB	REA
17	-5.6	62	0.26	1.39	103	25	9	7	9	18	0.57	0.23
5%	3%	40%	20%	50%	29%	44%	97%	97%	10%	17%	15%	14%

Age of Dam: 6 | Dam Weight: 1350 | dMPPA: 105

## 113 HALFMANN ORACLE LA G523

02-12-2019 | GKH : G523 | A (100%) | #4127368

BROWN REVELATION P7021

BFCK CHEROKEE CNYN 4912  
BROWN MS VICILA M7799

### BROWN ORACLE B112

BROWN MS P707 Y6648

BECKTON NEBULA P P707  
BROWN MS JULIAN W6579

HALFMANN NEBULA MT Z725

BECKTON NEBULA P P707  
HALFMANN MATTIE T336

### HALFMANN LANA NB C338

BECKTON LANA S341 JT

BECKTON JET L P491  
BECKTON LANA P656 JL

Individual Data

act. BW	80
SC	39.0
Frame	M

**HerdBuilder 190 / Top 13% | GridMaster 52 / Top 2%**

CED	BW	WW	ADG	DMI	YW	MLK	ME	HPG	CEM	STY	MRB	REA
14	-2.0	74	0.29	1.60	121	23	9	8	7	17	0.61	0.28
32%	45%	7%	6%	71%	5%	60%	97%	94%	44%	28%	11%	9%

Age of Dam: 4 | Dam Weight: 1350 | dMPPA: 104

# C&L SERVICES

Sale Services

TORCHING | SHEERING | SALE HELP

972.921.2881

*Serving the cattle industry  
for more than 20 years!*



# RED ANGUS BULLS



Lot 115

116

## HALFMANN SYNERGY BE F293

12-19-2018 | CFH: F293 | A (100%) | #4058008

BECKTON NEBULA P P707

BECKTON NEBULA M045  
BECKTON LANA M809 EP

### BROWN SYNERGY X7838

CBAR BROWN ABIGRACE T714 LJC MISSION STATEMENT P27  
BROWN MS ABIGRACE L7730

BECKTON EPIC X330 L6

BECKTON EPIC T330 L5  
BECKTON KIT R503 LN

### BECKTON BELGA B861 E

BECKTON BELGA L261 VG

BECKTON VEGAS PK F485  
BECKTON BELGA D054 GL

Individual Data	
act BW	75
SC	35.0
Frame	M

**HerdBuilder 162 / Top 55% | GridMaster 48 / Top 44%**

CED	BW	WW	ADG	DMI	YW	MLK	ME	HPG	CEM	STY	MRB	REA
17	-5.1	49	0.21	1.08	82	30	-1	8	10	14	0.57	-0.30
6%	5%	87%	57%	24%	77%	8%	33%	93%	5%	68%	15%	98%

Age of Dam: 5 | Dam Weight: 1305 | dMPPA: 100

118

## HALFMANN TOPGUN LA G485

02-10-2019 | CTH: G485 | A (100%) | #4127652

5L ADVANTAGE 3267-221Y

BUF CRK THE RIGHT KIND U199  
5L ADINA 195-3267

### 5L TOPGUN 560-65B

5L BLACK ADINA 525-560

TC STOCKMAN 365  
5L ADINA 293-525

BECKTON NEW ERA Y194

BECKTON NEBULA P P707  
BKT LARKEISA T310 JC

### HALFMANN LANA NE C237

BECKTON LANA U574 JL

BECKTON JULIAN G3 P608  
BECKTON LANA R241 JC

Individual Data	
act BW	75
SC	37.0
Frame	M

**HerdBuilder 168 / Top 45% | GridMaster 49 / Top 34%**

CED	BW	WW	ADG	DMI	YW	MLK	ME	HPG	CEM	STY	MRB	REA
19	-5.6	52	0.16	0.70	78	17	0	13	8	13	0.62	-0.10
1%	3%	77%	87%	9%	83%	96%	48%	15%	29%	77%	10%	80%

Age of Dam: 4 | Dam Weight: 1360 | dMPPA: 98

115

## HALFMANN SYNERGY BM F291

11-20-2018 | CFH: F291 | A (100%) | #4057996

BECKTON NEBULA P P707

BECKTON NEBULA M045  
BECKTON LANA M809 EP

### BROWN SYNERGY X7838

CBAR BROWN ABIGRACE T714 LJC MISSION STATEMENT P27  
BROWN MS ABIGRACE L7730

BECKTON SCAMP X494 E3

BECKTON SCAMP T A825  
BECKTON LANA S074 EP

### BECKTON BARMAID C773 S

BECKTON BARMAID X720 H

BECKTON HASTEN H S462  
BECKTON BARMAID P864 JC

Individual Data	
act BW	67
SC	40.0
Frame	M

**HerdBuilder 167 / Top 47% | GridMaster 48 / Top 50%**

CED	BW	WW	ADG	DMI	YW	MLK	ME	HPG	CEM	STY	MRB	REA
17	-5.3	48	0.2	1.00	81	30	-7	9	11	14	0.50	-0.33
4%	4%	87%	60%	20%	79%	7%	11%	79%	3%	70%	26%	99%

Age of Dam: | Dam Weight: | dMPPA: 94

*It wasn't many years ago that a Synergy son that looked like this could start the sale. Synergy remains one of the breed's best sources of proven calving ease, reduced feed intake and low maintenance energy requirement.*

117

## HALFMANN SYNERGY LK G602

03-31-2019 | CTH: G602 | A (100%) | #4127680

BROWN SYNERGY X7838

BECKTON NEBULA P P707  
C-BAR & BROWN ABIGRACE T714

### HALFMANN SYNERGY EO B059

BECKTON EOLA U101 NB

BECKTON NEBULA EN S347  
BECKTON EOLA S011 NB

BECKTON NEBULA L P093

BECKTON NEBULA M045  
BECKTON MARTA M021 LN

### BKT LARKEISA U583 NB

BKT LARKEISA E578 HB

BUF CRK HOBO 1961  
BKT LARKEISA B312 CB

Individual Data	
act BW	88
SC	35.0
Frame	M+

**HerdBuilder 211 / Top 2% | GridMaster 47 / Top 57%**

CED	BW	WW	ADG	DMI	YW	MLK	ME	HPG	CEM	STY	MRB	REA
15	-4.0	57	0.22	1.21	93	30	-3	13	9	20	0.40	-0.28
13%	13%	59%	45%	34%	53%	6%	27%	18%	17%	5%	46%	98%

Age of Dam: 11 | Dam Weight: 1230 | dMPPA: 103

*This linebred Nebula is out of a very productive, highly fertile dam who has maintained a 103 MPPA as an 11-yr-old.*

119

## HALFMANN SYNERGY LA G606

04-04-2019 | GKH: G606 | A (100%) | #4127416

BROWN SYNERGY X7838

BECKTON NEBULA P P707  
C-BAR & BROWN ABIGRACE T714

### HALFMANN SYNERGY EO B059

BECKTON EOLA U101 NB

BECKTON NEBULA EN S347  
BECKTON EOLA S011 NB

BECKTON NEBULA M045

BECKTON NEPTUNE R2 K065  
BECKTON BELGA K285 JL

### BECKTON LANA T311 NB

BECKTON LANA N163 JL

BKT JULIAN 7526 G  
BECKTON LANA K052 VG

Individual Data	
act BW	84
SC	35.0
Frame	M

**HerdBuilder 181 / Top 24% | GridMaster 48 / Top 51%**

CED	BW	WW	ADG	DMI	YW	MLK	ME	HPG	CEM	STY	MRB	REA
16	-4.7	55	0.2	0.92	87	28	-2	14	8	16	0.45	-0.35
11%	7%	68%	61%	16%	66%	15%	29%	11%	35%	44%	35%	99%

Age of Dam: 12 | Dam Weight: 1330 | dMPPA: 103

## 120 HALFMANN TAKEOVER RO G565

02-27-2019 | CFH : G565 | A (100%) | #4127566

LSF TAKEOVER 9943W

HXC CONQUEST 4405P  
LSF WIDELOAD R5014 U8061

### HALFMANN TAKEOVER SM C214

HALFMANN SANDMN NB Z708 BECKTON NEBULA P P707  
HALFMANN SANDMAN M601

HALFMANN NEBULAAQ Y597

BECKTON NEBULA P P707  
HALFMANN AQUILA U391

### HALFMANN ROSE NB B126

BECKTON ROSE X770 N BECKTON NEBULA G S237  
BECKTON ROSE S307 LO

Individual Data

act. BW	72
SC	39.0
Frame	M+

**HerdBuilder 168 / Top 45% | GridMaster 48 / Top 39%**

CED	BW	WW	ADG	DMI	YW	MLK	ME	HPG	CEM	STY	MRB	REA
19	-6.6	53	0.22	1.28	89	29	6	12	9	14	0.59	-0.14
1%	1%	76%	43%	40%	63%	10%	87%	23%	13%	73%	13%	87%

Age of Dam: 5 | Dam Weight: 1105 | dMPPA: 110

## 122 Beckton Accent G772 L3

05-06-2019 | BKT : G772 | A (100%) | #4170326

BECKTON ACCENT U777 C2

BECKTON CODY K1 P014  
BECKTON SUSAN R022 CQ

### BECKTON ACCENT B553 L2

BECKTON LANA X839 L BECKTON LEGEND S670  
BECKTON LANA S371 DM

BECKTON LIKABLE U120 L2

BECKTON LIKABLE S633  
BECKTON LANA S718 LN

### BECKTON ROSE Z290 L

BECKTON ROSE U122 NB BECKTON NEBULA PJ S543  
BECKTON ROSE S106 HW

Individual Data

act. BW	85
SC	35.5
Frame	M-

**HerdBuilder 169 / Top 43% | GridMaster 48 / Top 51%**

CED	BW	WW	ADG	DMI	YW	MLK	ME	HPG	CEM	STY	MRB	REA
13	-0.7	55	0.18	0.91	84	21	-1	10	4	17	0.45	-0.16
36%	71%	67%	78%	16%	74%	78%	37%	69%	93%	34%	35%	89%

Age of Dam: 7 | Dam Weight: 1340 | dMPPA: 98

## 124 Beckton Hughes G782 E3

05-08-2019 | BSF : G782 | A (100%) | #4171462

BIEBER H HUGHES W109

BASIN HOBO 0545  
BASIN ROSE 06T0

### BECKTON HUGHES C350 N2

BECKTON KIT Z049 N BECKTON NEBULA X353 E3  
BECKTON KIT X236 L

BECKTON EPIC X816 C6

BECKTON EPIC T330 L5  
BECKTON MONAR198 CQ

### BECKTON INDIGO B662 E

BECKTON INDIGO Y343 N BECKTON NEBULA T398 V3  
BECKTON INDIGO H150 LN

Individual Data

act. BW	75
SC	33.5
Frame	M-

**HerdBuilder 170 / Top 42% | GridMaster 43 / Top 98%**

CED	BW	WW	ADG	DMI	YW	MLK	ME	HPG	CEM	STY	MRB	REA
16	-4.1	48	0.12	0.97	68	25	1	11	9	17	0.25	-0.30
10%	12%	87%	97%	19%	93%	46%	51%	39%	13%	32%	84%	98%

Age of Dam: 5 | Dam Weight: 1170 | dMPPA: 96

## 121 HALFMANN TAKEOVER MT G609

04-07-2019 | CTH : G609 | A (100%) | #4127682

LSF TAKEOVER 9943W

HXC CONQUEST 4405P  
LSF WIDELOAD R5014 U8061

### HALFMANN TAKEOVER SM C214

HALFMANN SANDMN NB Z708 BECKTON NEBULA P P707  
HALFMANN SANDMAN M601

BROWN SYNERGY X7838

BECKTON NEBULA P P707  
C-BAR & BROWN ABIGRACE T7

### HALFMANN MARTA SY B097

BECKTON MARTA U079 NB BECKTON NEBULA EN S347  
BECKTON MARTA S772 LO

Individual Data

act. BW	86
SC	39.0
Frame	M

**HerdBuilder 169 / Top 43% | GridMaster 47 / Top 61%**

CED	BW	WW	ADG	DMI	YW	MLK	ME	HPG	CEM	STY	MRB	REA
17	-4.8	49	0.19	1.09	80	31	-4	12	8	15	0.51	-0.22
5%	6%	86%	67%	25%	80%	5%	22%	26%	24%	61%	24%	95%

Age of Dam: 5 | Dam Weight: 998 | dMPPA: 101

## 123 BKT G849

06-04-2019 | BKT : G849 | 2 (100%) | #4170590

BECKTON EPIC U749 D5

BECKTON EPIC K4 N795  
BECKTON DENISE R308 DM

### BECKTON EPIC Z674 E6

BECKTON INDIGO U504 EP BECKTON EPIC K6 S569  
BECKTON INDIGO S016 NB

BIEBER H HUGHES W109

BASIN HOBO 0545  
BASIN ROSE 06T0

### BECKTON LANA C332 H

BECKTON LANA X157 L BECKTON LIKABLE U120 L2  
BECKTON LANA U775 NB

Individual Data

act. BW	82
SC	33.5
Frame	M-

**HerdBuilder 163 / Top 54% | GridMaster 49 / Top 32%**

CED	BW	WW	ADG	DMI	YW	MLK	ME	HPG	CEM	STY	MRB	REA
14	-1.7	65	0.24	1.22	104	26	3	9	9	14	0.38	-0.05
27%	51%	27%	31%	34%	28%	36%	73%	84%	12%	67%	51%	70%

Age of Dam: 4 | Dam Weight: 1140 | dMPPA: 103

## 125 Beckton Warrior G046 W8

02-24-2019 | BKT : G046 | A (100%) | #4171128

BECKTON WARRIOR C695 W6

BECKTON WARRIOR Y108 E5  
BECKTON LANA Y033 W

### BECKTON WARRIOR E215 E7

BECKTON SUFFEINA C124 E BECKTON EMPERORA165 W4  
BECKTON SUFFEINA A439 N

BECKTON WARRIOR C695 W6

BECKTON WARRIOR Y108 E5  
BECKTON LANA Y033 W

### BECKTON EOLA E021 W

BECKTON EOLA C230 N BECKTON NEBULA X096 N4  
BECKTON EOLA U562 CQ

Individual Data

act. BW	51
SC	34.5
Frame	S+

**HerdBuilder 165 / Top 50% | GridMaster 46 / Top 75%**

CED	BW	WW	ADG	DMI	YW	MLK	ME	HPG	CEM	STY	MRB	REA
19	-6.3	49	0.18	1.07	79	28	-5	12	8	14	0.36	-0.21
1%	1%	85%	73%	24%	82%	18%	18%	36%	22%	70%	57%	94%

Age of Dam: 2 | Dam Weight: 830 | dMPPA: 99

125 Lots deep in the offering and we still have best 1% Calving Ease specialist - this one also ranks in the top 1/4 of Red Angus for milk, low feed intake, low maintenance energy requirement and maternal calving ease.



# RED ANGUS BULLS

126

## Beckton Accent G837 L5

05-29-2019 | BKT : G837 | A (100%) | #4170724

BECKTON ACCENT Y260 L3  
BECKTON ACCENT W180 C2  
BECKTON LANA W463 L

### BECKTON ACCENT B150 N4

BKT LARKEISA S055 NB  
BECKTON NEBULA P P707  
BECKTON LARKEISA P688 C

BECKTON LIKABLE B154 W4  
BECKTON LIKABLE Y124 L3  
BECKTON CHRISTY W429 W

### BECKTON SHEBA D138 L

BSF JULIA B215 J  
BECKTON JULIAN X465 J5  
BECKTON SHEBA P631 JC

#### Individual Data

act. BW	68
SC	34.5
Frame	M-

**HerdBuilder 182 / Top 22% | GridMaster 47 / Top 60%**

CED	BW	WW	ADG	DMI	YW	MLK	ME	HPG	CEM	STY	MRB	REA
16	-4.7	50	0.17	0.70	78	21	-2	12	7	17	0.52	-0.35
7%	7%	84%	80%	9%	83%	82%	30%	32%	56%	31%	22%	99%

Age of Dam: 3 | Dam Weight: 765 | dMPPA: 83

128

## HALFMANN ACCENT NB G555

02-18-2019 | CFH : G555 | A (100%) | #4127556

BECKTON ACCENT U777 C2  
BECKTON CODY K1 P014  
BECKTON SUSAN R022 CQ

### BECKTON ACCENT Y312 N3

BKT LARKEISA S055 NB  
BECKTON NEBULA P P707  
BECKTON LARKEISA P688 C

BECKTON NEBULA W065 C3  
BECKTON NEBULA T269 E2  
BECKTON LANA T104 CT

### BECKTON INDIGO Y026 N

BECKTON INDIGO W866 A  
BECKTON CODY K1 P014  
BECKTON INDIGO D780 JL

#### Individual Data

act. BW	97
SC	38.0
Frame	M+

**HerdBuilder 132 / Top 89% | GridMaster 46 / Top 80%**

CED	BW	WW	ADG	DMI	YW	MLK	ME	HPG	CEM	STY	MRB	REA
14	-2.4	60	0.21	1.34	93	28	4	14	5	12	0.30	-0.17
32%	37%	50%	58%	45%	54%	16%	75%	7%	88%	87%	72%	90%

Age of Dam: 8 | Dam Weight: 1650 | dMPPA: 108

130

## HALFMANN TAKEOVER CH G622

04-20-2019 | CFH : G622 | A (100%) | #4127628

LSF TAKEOVER 9943W  
HXC CONQUEST 4405P  
LSF WIDELOAD R5014 U8061

### HALFMANN TAKEOVER SM C214

HALFMANN SANDMN NB Z708  
BECKTON NEBULA P P707  
HALFMANN SANDMAN M601

HALFMANN GENESIS A831  
BECKTON NEW ERA Y194  
BECKTON EOLA U247 JL

### HALFMANN CHIEF GN D462

HALFMANN CHIEF EP B024  
BECKTON EPIC R397 K  
HALFMANN CHIEF NB Y589

#### Individual Data

act. BW	82
SC	36.0
Frame	M+

**HerdBuilder 169 / Top 43% | GridMaster 49 / Top 29%**

CED	BW	WW	ADG	DMI	YW	MLK	ME	HPG	CEM	STY	MRB	REA
16	-3.4	54	0.22	1.08	90	26	7	12	6	15	0.62	-0.23
10%	20%	72%	45%	24%	61%	32%	92%	27%	78%	56%	10%	95%

Age of Dam: 3 | Dam Weight: 1135 | dMPPA: 105

127

## HALFMANN ACCENT BA G579

03-06-2019 | GKH : G579 | A (100%) | #4127398

BECKTON ACCENT Y312 N3  
BECKTON ACCENT U777 C2  
BKT LARKEISA S055 NB

### BECKTON ACCENT C216 D4

BECKTON BELGA R716 DM  
BECKTON DOMINOR ZC M919  
BECKTON BELGA K285 JL

BECKTON ACCENT Y312 N3  
BECKTON ACCENT U777 C2  
BKT LARKEISA S055 NB

### HALFMANN BARMAID AC E707

HALFMANN BARMAID SY C223  
BROWN SYNERGY X7838  
HALFMANN BARMAID JL A884

#### Individual Data

act. BW	60
SC	35.0
Frame	M

**HerdBuilder 158 / Top 61% | GridMaster 47 / Top 62%**

CED	BW	WW	ADG	DMI	YW	MLK	ME	HPG	CEM	STY	MRB	REA
18	-6.0	48	0.18	0.96	77	26	-4	12	8	13	0.59	-0.30
3%	2%	89%	74%	18%	84%	34%	22%	23%	35%	77%	13%	98%

Age of Dam: 2 | Dam Weight: 978 | dMPPA: 95

129

## HALFMANN SYNERGY LA G592

03-14-2019 | CFH : G592 | A (100%) | #4127598

BECKTON NEBULA P P707  
BECKTON NEBULA M045  
BECKTON LANA M809 EP

### BROWN SYNERGY X7838

CBAR BROWN ABIGRACE T714  
LJC MISSION STATEMENT P27  
BROWN MS ABIGRACE L7730

BECKTON EPIC X330 L6  
BECKTON EPIC T330 L5  
BECKTON KIT R503 LN

### BECKTON LANA A642 E

BECKTON LANA X410 R  
BECKTON RANGER T603 H3  
BECKTON LANA S866 CH

#### Individual Data

act. BW	82
SC	40.0
Frame	M

**HerdBuilder 146 / Top 79% | GridMaster 49 / Top 28%**

CED	BW	WW	ADG	DMI	YW	MLK	ME	HPG	CEM	STY	MRB	REA
14	-3.1	56	0.24	1.22	93	28	-2	8	8	13	0.53	-0.25
28%	24%	66%	34%	34%	52%	17%	28%	89%	25%	84%	21%	96%

Age of Dam: 5 | Dam Weight: 1280 | dMPPA: 102

131

## HALFMANN TEN-X SI G575

03-04-2019 | CFH : G575 | A (100%) | #4208392

REDHILL TEN X 104U 190A  
AAR TEN X 7008 SA  
RED HILL B571 BARMAID 104U

### RHF-RHR 190A TENX 49D

REDHILL 151Y AMBER 134B  
REDHILL U199 LANCER 151Y  
RHF-CCH 4X AMBER 46Z

BECKTON NEBULA P P707  
BECKTON NEBULA M045  
BECKTON LANA M809 EP

### HALFMANN SIERRA NB X467

HALFMANN SIERRA U330  
BECKTON HALFMANHUSTLR R588  
OLC SIERRA R417

#### Individual Data

act. BW	85
SC	37.0
Frame	M+

**HerdBuilder 172 / Top 38% | GridMaster 49 / Top 23%**

CED	BW	WW	ADG	DMI	YW	MLK	ME	HPG	CEM	STY	MRB	REA
13	-3.1	60	0.26	1.42	101	26	2	11	7	16	0.51	-0.07
47%	24%	49%	21%	53%	34%	35%	58%	49%	55%	47%	24%	74%

Age of Dam: 9 | Dam Weight: ET | dMPPA: 100

## 132 HALFMAN ACCENT CH G442

02-05-2019 | CTH: G442 | A (100%) | #4127642

BECKTON ACCENT Y312 N3  
BECKTON ACCENT U777 C2  
BKT LARKEISA S055 NB

### BECKTON ACCENT C216 D4

BECKTON BELGA R716 DM  
BECKTON DOMINOR ZC M919  
BECKTON BELGA K285 JL

BUF CRK THE RIGHT KIND U199  
BUF CRK LANCER R017  
BUF CRK SHOSHONE R353

### HALFMANN CHIEF RK E755

HALFMANN CHIEF DV Z707  
HALFMANN DIVIDEND U398  
HALFMANN CHIEF S506

Individual Data	
act. BW	70
SC	
Frame	M+

**HerdBuilder 156 / Top 64% | GridMaster 48 / Top 52%**

CED	BW	WW	ADG	DMI	YW	MLK	ME	HPG	CEM	STY	MRB	REA
14	-3.3	51	0.19	0.85	82	24	-2	11	7	14	0.51	-0.31
23%	21%	81%	66%	14%	76%	55%	32%	42%	58%	70%	24%	98%
Age of Dam: 2		Dam Weight: 1020		dMPPA: 96								

## 134 HALFMAN DEFENDER RB G422

01-22-2019 | GKH: G422 | A (100%) | #4127286

5L ADVOCATE 817-14W  
5L SIGNATURE 5615  
5L MARTA 345-817

### 5L DEFENDER 560-30Z

5L BLACK ADINA 525-560  
TC STOCKMAN 365  
5L ADINA 293-525

BECKTON CLIFFTOP W692 E3  
BKT CLIFFTOP TP R288  
BECKTON LYDIA S274 EP

### HALFMANN REBALAS CT E823

HALFMANN REBALAS NC B003  
LSF NIGHT CALVER 9921W  
HALFMANN REBALAS IM Z684

Individual Data	
act. BW	65
SC	39.0
Frame	M

**HerdBuilder 105 / Top 99% | GridMaster 49 / Top 28%**

CED	BW	WW	ADG	DMI	YW	MLK	ME	HPG	CEM	STY	MRB	REA
15	-4.7	58	0.23	1.58	94	26	-4	8	5	8	0.53	0.17
13%	7%	56%	41%	69%	49%	37%	20%	92%	81%	99%	21%	22%
Age of Dam: 2		Dam Weight: 1105		dMPPA: 102								

## 136 HALFMAN SYNERGY CH G591

03-12-2019 | CFH: G591 | A (100%) | #4127596

BECKTON NEBULA P P707  
BECKTON NEBULA M045  
BECKTON LANA M809 EP

### BROWN SYNERGY X7838

CBAR BROWN ABIGRACE T714  
LJC MISSION STATEMENT P27  
BROWN MS ABIGRACE L7730

BECKTON JULIAN G2 M345  
BECKTON JULIAN GG B571  
BECKTON LANA H544 WR

### BECKTON CHRISTY T444 JL

BECKTON CHRISTY L654 JL  
BECKTON JULIAN GG B571  
BECKTON CHRISTY H207 HD

Individual Data	
act. BW	86
SC	35.0
Frame	M-

**HerdBuilder 201 / Top 5% | GridMaster 50 / Top 13%**

CED	BW	WW	ADG	DMI	YW	MLK	ME	HPG	CEM	STY	MRB	REA
15	-3.4	54	0.23	0.86	91	26	-5	12	8	18	0.65	-0.41
21%	20%	71%	39%	14%	58%	38%	17%	27%	29%	19%	7%	99%
Age of Dam: 12		Dam Weight: 1260		dMPPA: 94								

## 133 HALFMAN TAKEOVER CC G559

02-21-2019 | GKH: G559 | A (100%) | #4127394

LSF TAKEOVER 9943W  
HXC CONQUEST 4405P  
LSF WIDELOAD R5014 U8061

### HALFMANN TAKEOVER SM C214

HALFMANN SANDMN NB Z708  
BECKTON NEBULA P P707  
HALFMANN SANDMAN M601

HALFMANN NEBULAAL Y593  
BECKTON NEBULA P P707  
HALFMANN ALEXIS U352

### HALFMANN CHOCTAW NB B153

HALFMANN CHOCTAW U347  
OLC CHATEAU L416  
HALFMANN CHOCTAW CHIEF

Individual Data	
act. BW	80
SC	38.0
Frame	M+

**HerdBuilder 172 / Top 38% | GridMaster 48 / Top 48%**

CED	BW	WW	ADG	DMI	YW	MLK	ME	HPG	CEM	STY	MRB	REA
17	-5.5	45	0.21	1.03	78	26	2	10	8	16	0.54	-0.24
6%	3%	93%	53%	22%	82%	30%	63%	66%	32%	48%	19%	96%
Age of Dam: 5		Dam Weight: 1130		dMPPA: 100								

## 135 HALFMAN ACCENT TA G581

03-07-2019 | GKH: G581 | A (100%) | #4127400

BECKTON ACCENT Y312 N3  
BECKTON ACCENT U777 C2  
BKT LARKEISA S055 NB

### BECKTON ACCENT C216 D4

BECKTON BELGA R716 DM  
BECKTON DOMINOR ZC M919  
BECKTON BELGA K285 JL

BIEBER H HUGHES W109  
BASIN HOBO 0545  
BASIN ROSE 0670

### HALFMANN TAMARA HG E777

BECKTON TAMARA U011 LO  
BECKTON LOKI CL S284  
BECKTON TAMARA S314 HU

Individual Data	
act. BW	65
SC	34.0
Frame	M-

**HerdBuilder 163 / Top 53% | GridMaster 46 / Top 84%**

CED	BW	WW	ADG	DMI	YW	MLK	ME	HPG	CEM	STY	MRB	REA
16	-4.3	54	0.18	0.98	83	25	0	11	8	15	0.36	-0.34
8%	10%	74%	75%	19%	75%	47%	41%	54%	25%	58%	57%	99%
Age of Dam: 2		Dam Weight: 1005		dMPPA: 98								

## 137 HALFMAN NEBULA LA G522

02-12-2019 | GKH: G522 | A (100%) | #4127366

BECKTON NEBULA M045  
BECKTON NEPTUNE R2 K065  
BECKTON BELGA K285 JL

### BECKTON NEBULA P P707

BECKTON LANA M809 EP  
BECKTON EPIC K1 K863  
BECKTON LANA K253 DM

BECKTON NEW ERA Y194  
BECKTON NEBULA P P707  
BKT LARKEISA T310 JC

### HALFMANN LARKEISA NE C289

BECKTON LARKEISA X094 H  
BECKTON HASTEN U108 J3  
BKT LARKEISA U583 NB

Individual Data	
act. BW	60
SC	35.0
Frame	M-

**HerdBuilder 206 / Top 3% | GridMaster 46 / Top 75%**

CED	BW	WW	ADG	DMI	YW	MLK	ME	HPG	CEM	STY	MRB	REA
18	-6.7	42	0.19	0.91	73	27	-5	11	8	20	0.49	-0.43
3%	1%	96%	66%	16%	89%	27%	17%	55%	33%	5%	28%	99%
Age of Dam: 4		Dam Weight: 1125		dMPPA: 98								

*We weren't kidding when we said you needed to study this offering till the very last bull. 6 Bulls on these final two pages rank in the best 10% or better for Calving Ease and the final two bulls in the sale are both over 200 HerdBuilder!*



# COMMERCIAL FEMALES

## How the Halfmann-Beckton Commercial Female Sale will work:

- Commercial Females were videoed at their respective ranch of origin prior to the sale. That video will be available with the bull videos on Superior and at [HalfmannRedAngus.com](http://HalfmannRedAngus.com).
- Females will be sold in uniform groups of 10-20 head according to age and pregnancy status.
- The winning bidder of any groups sold as “gate-cut” will have the option of “rolling” the remaining head in that group.
- The above lots include general descriptions of the cattle selling as well as deliver information. The Sale Day Supplement will have any updated palpation/ultrasound information and how that impacts the exact number of head in each lot.
- Halfmann commercial females sell FOB Miles, TX. Beckton will pay the first 400 miles freight from Sheridan, WY for Beckton commercial females.

All commercial Females identified as “Bred” have been determined pregnant by a competent ultrasound or palpation technician.



	# Head	Age	Genetic Makeup	Estimated Calving Dates	Service Sire(s)
<b>C1</b> Halfmann	41	Bred Heifers	Red Angus	(18) AI Bred due 01/15/21 (23) Nat. Service due 01/25/21 through 03/11/21	AI to ProfitMaker then exposed to Lot 2, 3 and 4 Oracle sons.
	<i>Sold in three "gate cuts" of 6 AI bred then three "gate cuts of 6 and one gate cut of 5 Nat.Serv.Bred. FOB Miles, TX</i>				

	# Head	Age	Genetic Makeup	Estimated Calving Dates	Service Sire(s)
<b>C2</b> Halfmann	12	2-4 Yr-olds	Red Angus	Nat. Service due 3/2/21 through 3/31/21	Halfmann Red Angus Herdsires: 3522613, 3716839, 3716781 & 1746187
	<i>Sold in 2 "gate cuts" of 6 head each. FOB Miles, TX</i>				

	# Head	Age	Genetic Makeup	Estimated Calving Dates	Service Sire(s)
<b>C3</b> Halfmann	12	5-7 Yr-olds	Red Angus	Nat. Service due 2/10/21 through 3/21/21	Halfmann Red Angus Herdsires: 3522613, 3716839, 3716781 & 1746187
	<i>Sold in 2 "gate cuts" of 6 head each. FOB Miles, TX</i>				

	# Head	Age	Genetic Makeup	Estimated Calving Dates	Service Sire(s)
<b>C4</b> Beckton	12	Bred Heifers	Red Angus	Starting 3/5/21	Beckton Calving Ease Herd Sires
	<i>Sold in one lot of 12 head. 400 miles free from Sheridan, WY</i>				
<b>C5</b> Beckton	40	2-5 year-olds	Red Angus	Starting 3/5/21	Beckton Calving Ease Herd Sires
	<i>Sold in two "gate cuts" of 20 head. 400 miles free from Sheridan, WY</i>				
<b>C6</b> Beckton	40	2-5 year-olds	Red Angus	Starting 4/15/21	Beckton Calving Ease Herd Sires
	<i>Sold in two "gate cuts" of 20 head. 400 miles free from Sheridan, WY</i>				
<b>C7</b> Beckton	20	6-9 year-olds	Red Angus	Starting 3/5/21	Beckton Calving Ease Herd Sires
	<i>Sold in one lot of 20 head. 400 miles free from Sheridan, WY</i>				

# SWEETWATER STEEL COMPANY, LTD.

## Metal Building Products

March 2020

Two Locations to Serve Your Needs

[www.sweetwatersteel.com](http://www.sweetwatersteel.com)

**\*Main Office\***

Sweetwater Steel Company  
10416 NI-20  
Sweetwater, Tx 79556  
Located 4 miles west of Sweetwater  
(Exit mile marker 240)  
Phone: 325-235-3644  
Toll Free: 800-982-3384  
Fax: 325-235-3935



Store Hours  
Mon-Fri: 8:00 a.m. - 5:00 p.m.  
Sat: 8:00 a.m. - 11:30 a.m.

**\*Branch Location\***

Sweetwater Steel Company  
1047 Early Blvd  
Early, Tx 76802  
Located downtown Early on Hwy 67/377  
Phone: 325-641-1345  
Toll Free: 877-741-1345  
Fax: 325-641-2834

**Metal Building Products - Structural Steel - Fencing Supplies**

ALL PRICES IN THIS CATALOGUE SUBJECT TO CHANGE WITHOUT NOTICE



# REFERENCE SIRES

Ref Sire	Reg#	Name	HB	GM	CED	BW	WW	YW	ADG	DMI	MM	ME	HPG	CEM	STAY	Marb	REA
A	1703720	BROWN ORACLE B112	205	56	15	-2.3	84	137	0.33	1.69	19	7	5	8	17	0.71	0.75
B	1627789	5L BOURNE 117-48A	167	50	14	-4	76	114	0.23	1.64	24	-2	19	4	13	0.68	0.02
C	1384811	BROWN SYNERGY X7838	197	49	17	-5.7	49	85	0.22	1.46	35	-1	8	12	18	0.83	-0.45
D	3487279	BECKTON LIKABLE C229 R3	191	49	15	-1.8	66	102	0.23	1.06	24	-1	10	6	18	0.37	0.19
E	979031	BECKTON NEBULA P P707	194	49	16	-5.7	56	98	0.26	1.44	28	-1	11	7	18	0.74	-0.39
F	1701524	5L TOPGUN 560-65B	153	50	20	-6.2	56	91	0.22	1.05	14	-11	18	10	9	0.59	0.21
G	1549933	5L DEFENDER 560-30Z	91	51	16	-4.8	60	98	0.24	2.15	21	-12	8	2	6	0.88	0.26
H	1451236	BECKTON ACCENT Y312 N3	115	45	17	-5.5	55	84	0.18	1.48	25	-6	16	6	8	0.55	-0.25
I	3487412	BECKTON ACCENT C216 D4	146	47	18	-5.2	49	79	0.19	0.79	25	-6	7	7	13	0.58	-0.41
J	3550323	RHF-RHR 190A TENX 49D	148	51	11	-1.7	65	108	0.27	1.41	28	2	11	6	13	0.62	-0.02
K	1706097	BECKTON EPIC B310 J6	174	48	14	-2	69	104	0.22	1.38	28	-1	12	6	16	0.3	0
L	1705638	BECKTON ACCENT B740 W3	189	49	21	-5.7	66	103	0.23	1.45	26	-1	11	9	16	0.35	0.24
M	1677186	HALFMANN SYNERGY EO B059	186	48	20	-8.8	48	81	0.2	1.08	35	-2	12	12	15	0.65	-0.48
N	1746293	HALFMANN TAKEOVER SM C214	145	48	20	-6.3	47	80	0.2	1.01	26	4	13	8	11	0.64	-0.16
O	1705884	BECKTON NEBULA B557 J3	207	51	15	-5.2	53	96	0.27	1.09	27	0	11	6	19	0.67	-0.02
P	1331776	BECKTON ACCENT W180 C2	247	47	20	-5.2	61	93	0.2	1.33	25	-1	12	8	24	0.27	0.04
Q	1626302	BECKTON JULIAN A434 N6	163	50	11	-1	72	115	0.27	1.27	19	3	12	3	15	0.41	-0.17
R	1705725	BECKTON LIKABLE B032 C5	208	53	18	-6.1	53	109	0.35	1.35	26	7	13	7	18	0.58	-0.1
S	3776481	BECKTON CARDINAL E381 J2	167	49	15	-5	56	95	0.24	0.84	25	-2	14	6	14	0.27	0.01
T	3776759	BECKTON ACCENT E492 N4	189	47	19	-5.4	60	90	0.19	1.26	30	3	11	9	17	0.42	0.04
U	3776785	BECKTON CARDINAL E673 L	223	50	22	-6.8	61	98	0.23	0.99	25	-1	13	12	18	0.44	0.28
V	3777591	BECKTON LIKABLE E391 N4	226	50	14	-3.1	64	106	0.26	0.95	26	3	12	7	22	0.38	-0.11
W	3778225	BECKTON HUGHES E261 S3	188	46	18	-5.9	58	86	0.17	1.25	28	-6	13	10	17	0.36	-0.13
X	1705673	BECKTON LIKABLE B549 N4	217	49	13	-2.3	67	112	0.28	1.63	27	5	12	6	21	0.34	0.1
Y	3777405	BECKTON LEGEND E032 E3	198	50	21	-3.9	60	98	0.23	0.75	25	-2	11	10	16	0.38	0.18
Z	1705827	BECKTON ACCENT B150 N4	189	47	14	-3.9	58	82	0.15	0.78	25	-5	12	5	19	0.62	-0.44



**- WFL ProfitMaker E7030 -  
ABS-Global's \$50,000 Calving Ease and Feed  
Efficiency Specialist is the AI Service Sire  
on Lot C1 Bred Heifers**

# TERMS & CONDITIONS

## BIDDING DISPUTES

The Auctioneer will settle any disputes as to bids, and his decision on such matters shall be final.

## TERMS

Terms of sale are cash. All settlements will be made with the clerks of the sale immediately following the conclusion of the sale and before any cattle will be released.

## PURCHASER'S RISK

Each animal becomes the risk of the Buyer as soon as sold. Insurance will be available sale day.

## CERTIFICATE OF REGISTRY

A certificate of registry will be furnished to the Buyer for each animal after settlement has been made.

## ANNOUNCEMENTS

Changes or errors in the information contained in this catalog relating to the animals offered for sale will be announced from the auction box and such announcements shall take precedence over printed matter in the catalog.

## BREEDING GUARANTEE

All animals sold are guaranteed breeders by the Seller. All claims for adjustment or refund must be made in writing within six months of the sale date. In the event an animal is claimed to be a non-breeder, the purchaser may return the animal to the ranch of the seller if in good condition, free of disease, and complying with the health requirements of the Seller's state. The Seller will be entitled to six months trial following the return of the animal in which to prove that the animal is a breeder. If at the end of six months, the Seller shall be obligated, at his option, to refund the purchase price, replace the animal with another of equal value, or grant the buyer credit for use on cattle marketed by the seller. The return of the full purchase price shall, in any case, be deemed full satisfaction and settlement. If the Seller proved the animal to be a breeder, it shall be the obligation of the purchaser to take delivery of the animal at the purchaser's expense. All animals are guaranteed to be breeders, with the exception of a) calves under twelve months of age; or b) animals shown by Purchaser after sale; or c) gross negligence or willful misconduct on the part of the Purchaser.

## SELLER'S SEMEN RIGHTS

Seller keeps a 50% revenue-sharing breeding interest without possession, in every bull in this catalog unless otherwise noted in this catalog or in the sale day supplement. In the event Seller elects to collect semen from a designated bull, it will be done at Seller's expense and during such time when purchaser is not using the bull for breeding.

Future semen collections of the bull must be made known to all owners prior to collecting. These collections and costs will be divided according to each owner's interest unless otherwise agreed upon mutually by all owners.

## LIABILITY

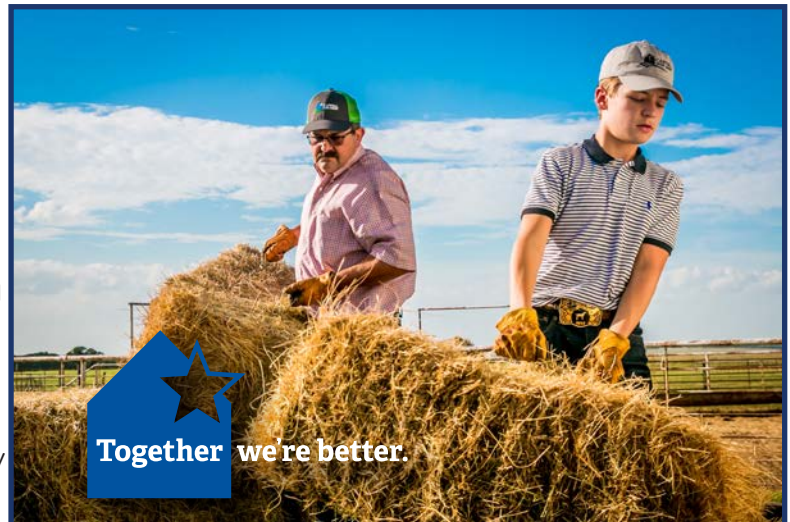
Neither owners, sale managers, clerks nor anyone connected with the sale assumes responsibility, legal or otherwise, for damage of any kind.

## CONTRACT

The above terms and conditions shall constitute a contract between the buyer and seller of each animal sold.

## IMPLIED WARRANTY

Except for those stated in the terms and conditions, there are no warranties or implies, as to merchantability or fitness for a particular purpose with respect to the cattle being sold in this auction. The warranties set forth in the terms and conditions are in lieu of all other warranties, either expressed or implied, and the remedies provided therein shall be the sole and exclusive remedy of the buyer, or any party claiming through the buyer, for any breach of warranty or guarantee therein provided and all other obligations or liabilities.




At Capital Farm Credit, we do things differently. We're a cooperative—that means we're owned by the same ranchers, farmers and agribusinesses we serve. Whether you're looking for operating capital, a beginning rancher loan or need help navigating a rural land purchase, your goals are our goals.

Partnership that really pays.



**SAN ANGELO 325.949.8114**  
5255 Bentwood Drive

 [capitalfarmcredit.com](http://capitalfarmcredit.com)  
NMLS493828





*Red Angus Breeder since 1964*  
2501 CR 357  
Miles, TX 76861  
325.468.2390  
info@halfmannredangus.com  
**HalfmannRedAngus.com**



**2020 Halfmann - Beckton**  
***Profit Through Experience Sale***  
Wednesday, October 7, 2020 • 1 pm • at the ranch in Miles, TX